

Friend Henry Cassidy is missing; last at a hotel.

As Darkness Falls

[Car park] car, jeep, tile, N. i { - }
look at car (y keep valuables in the boot) open boot → gun. x gun (6 bullets)
lose boot. look at jeep (black, dk tint windows) x jeep (no keyhole, number plate)
x plate ("EY4155") x tile (dr hole)

N → [Garden] fountain, N, S, E. look at fountain (green in jet black, no water, several hoses), sun flowers (caving)
N (gates black; no drains lock) E → [Courtyard] kennel, tile, N, S, E, W. N (office)

x kennel (locked, device black; red) N → [office] with dog (tired arse). E from tlyd → locked, slot for cashy
S from tlyd (locked Moonlight Suite) // shoot dog (takes 2 bullets) → dead dog, desk, computer
x dog (collar) look at collar ("Xetres") x collar (electronic device) x desk → newspaper

look at desk (drawers, junk) turn on computer (no power)
// x kennel (while holding collar) → cashy. x it (Sunshine)

1/e → [Sunshine Suite] bed, wardrobe, N, W. x bed → briefcase. open wardrobe → jacket.
look at briefcase ("Betsey") open it (combo lock) x jacket → remote control (into the)

look at control (for car). x control (a screwdriver would help to remove batteries)
use control on jeep → petrol car. x it (full) / open briefcase. YES. 4155. (unlocked)

open briefcase → "lighter". use car on newspaper (y spill a little on)
of Sunshine Suite → Bathroom (no objects) / N of office → [store room] generator

use petrol on generator. turn on generator. / turn on computer. XERXES.
1. YES (security disabled) 1. (enid) 1 (with) 3 (Elizabeth York confirming booking for Oct 24th, Spm

1. 2. Outrigger from you to Dr Edward. (Xetres ate something odd)
N of tlyd → [plate] tile, N, S, W. N → [Front door] door. x door (this custodian gives custody?) (secreted). N.W.S.

W [Ally] trap door, window (bars), no bent outward
W of Plate → [Orchard] tree, hedge, shed look at tree → house. look at hedge (thick to S)
use shovel on house (ord / reach) Shovel is too heavy to carry now. use gun on house (use 2 bullets)
use rope on trees. left trap door (not open) // d. [dark space] (no light)
use lighter → [Coal cellar] ~~cond~~ pile of coal, Bucket, bag, N. (can't take bag)
N → [Wine cellar] rack, S, U. x rack (exp) U → [Cellar stairs] closed, S, D. open chest → strimmer (needs petrol)
use petrol can on strimmer. (take strimmer: too heavy with current one) x can (1/4 full now)
S [Hall] bronze statue, N, S, E, W. statue: Christopher Columbus. (one gun pullable, can be gun smothering?)
W [Dining room] pantry, dining table, N, E. look at pantry: Columbus into telescope + compass
left pantry → safe (4 digit code) N (locked, silver lock) / E of Hall → [Lounge] fireplace, N, W.
no study chess board (missing bk king, bk bishop, bk knight, bk pawn, drawn) open drawer → Note, pawn

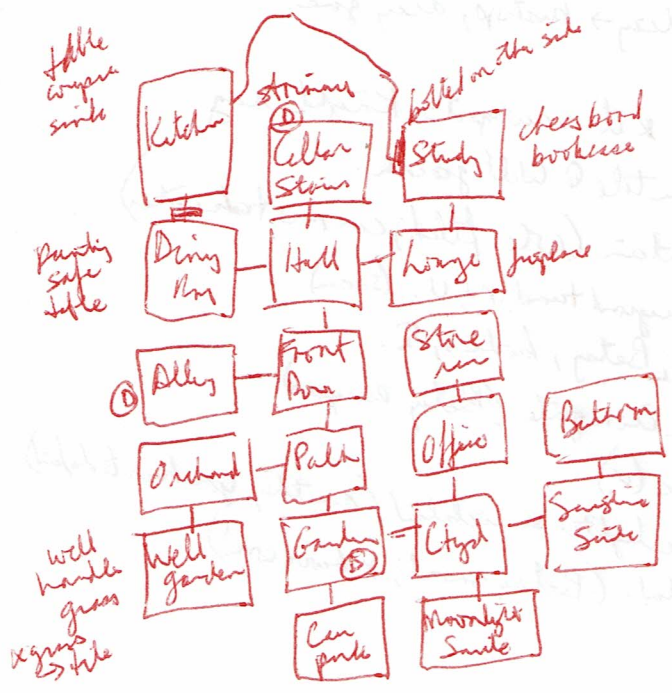
Needle Note = Around the flowing sunlight hair
The royal queen Northward facing
To her left her husband royal
On her right her champion loyal
Ahead the infant you without fear
And a holy man brings up the rear.

Paron (Patch)

Well
K
K
K
Bishop
Curate

look at bookline → reference books. x bookline → dictionary
look at reference books red books: Columbus (1491-1506, 1st voyage: 1492, number: 1498)
x dictionary (needs buttons) / x safe. YES. 1498 → metal detector.
/ 5) Well → unblock further → [Front door] N, S, W, Further. W. take rope
/ use metal detector on dead dog (✓)

WANCE DJ
AT 10P
Feb 10/09



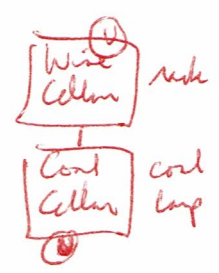
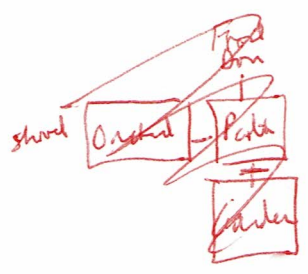
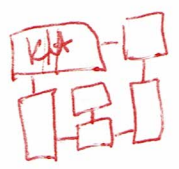
use ~~bucket~~ bucket (of coal) on fireplace
 use (petrol soaked) newspaper on fireplace
 use lighter on fireplace (squirrels, smelly, glowing, full)
 pull arm (of ^{hall} stairs) \Rightarrow door open?

(you can take strimmer to only gun + lighter)
 use strimmer on hedge @ Orchard \rightarrow Broken strimmer, S.

use rope on well
 use bucket on rope
 furr handle \rightarrow bucket of water, take it.
 use bucket of water on (lit) fireplace
 \rightarrow silver key.

corpse: fence, x corpse (fat, x fat)
 x sink \rightarrow knife, use knife on fat \rightarrow cassette

use knife on dead dog \rightarrow iron key.
 use knife on route control \rightarrow batteries, control game.
 use batteries on dictaphone
 use cassette on dictaphone (Henry Casey buried)
 something under tree: creature beneath the house
 use shovel on tree \rightarrow bag, open bag \rightarrow telescope + candy



use bucket on coal

[Moonlight Suite] bed, wardrobe, cabinet, N. open cabinet → Diary
read Diary (dead are reanimated underground; enter via fountain C of keys, one hidden here.
x diary (worn spine). use knife on diary (no reason right now)
use metal detector on diary (screeps) use knife on diary → bishop, diary gone.

/use bishop on tile @ car park.
//x mark @ wire altar → hole. x hole → linen package. x it. unwrapped → Knight, ray

//use telescope on bronze statue. take key / use key on tile @ Well garden.
use knight on tile @ City (quarry, wire @ fountain) / x fountain (wires filled; can now take water)

/use bucket of water on fountain → opening Δ. D3 [Underground tunnel] N, U. (second
N [Laboratory] case, gas cylinders, equipment, iron gate, Betty, bodies, S.

Speak to Betty → ~~zombies~~ (bodies ⇒ Zombies) use iron key on iron gate (Betty escapes)

x equipment → flask. use petrol can on glass flask (v)
use ray on glass flask → Molotov cocktail. S. use lighter on cocktail (something you have to do first)
burn on gas. S. use lighter on cocktail. throw cocktail. (Betty sword; y leave now!)

[Faint handwritten notes and diagrams, including a small grid diagram]

