

AT WIT'S END  
 (M) (awe-gam)  
 8:18p - 9:08p

Fenway Park, At Bat you: Jake Garrett, Thu 10:45 pm, Excited

→ ~~catch~~ hot ball (ball)

- need to know pitch of location (catcher tells pitcher type of pitch + target by moving behind plate)

X catcher (one finger = fast ball)

X catcher (shift to inner edge of strike zone)

→ Trever's Rm, on the table (exit S)

Spike in thigh, Charlie shoots morphine, agree to go to hospital  
 uniform (front + back pocket)

↳ suggests changing into sneakers, put swiss army knife in back pocket

- have wife + 2 twin daughters

Ambulance (med supplies, Jason's, IV pole)

Jason straps you down, 115 over 62 blood pressure, 64 pulse, diabetic  
 98.6 temp.

Accident! falls off cliff! IV pole falls on you. Engine explodes.

take pole, disengage brake with pole.

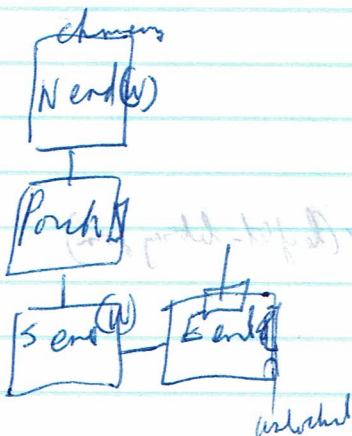
→ Heavy Brad, on the stretcher (pole bent)

take knife, cut straps → Beach Above (cliff N, forest W+E, over W, path S)

X knife (also, screwdrivers (flathead + Phillips) bottle opener, scissors, awl)

S → Street of Beach S → Private Beach E → Gate entrance (padlock on gate)

unlock padlock = awl! take padlock, open gate. e → Beach.



jump + tied in living Rm (Tommy + Bobby)

B - 6' 1030s, dk hair, 2" scar on R cheek, missing teeth

T - over 6', 20's, bald, thin, tattoos on back

gag, blindfolded, → In trunk of a car

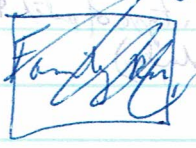
→ Some iron, sitting on the chair

(possible scene of luggage + fake optoez car.)

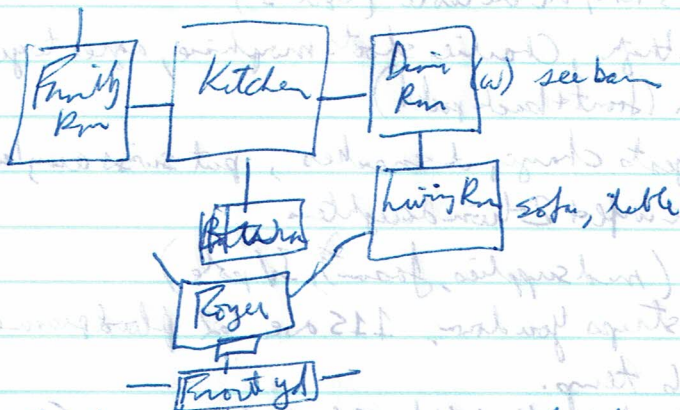
Bus 27W TA  
 (map - 2000) (M)  
 9:50: P - 9:51: P

Bathroom (B doesn't have view of toilet or sink)

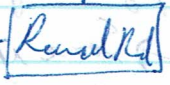
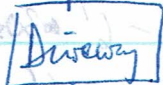
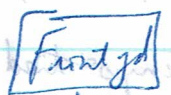
B calls Jimmy



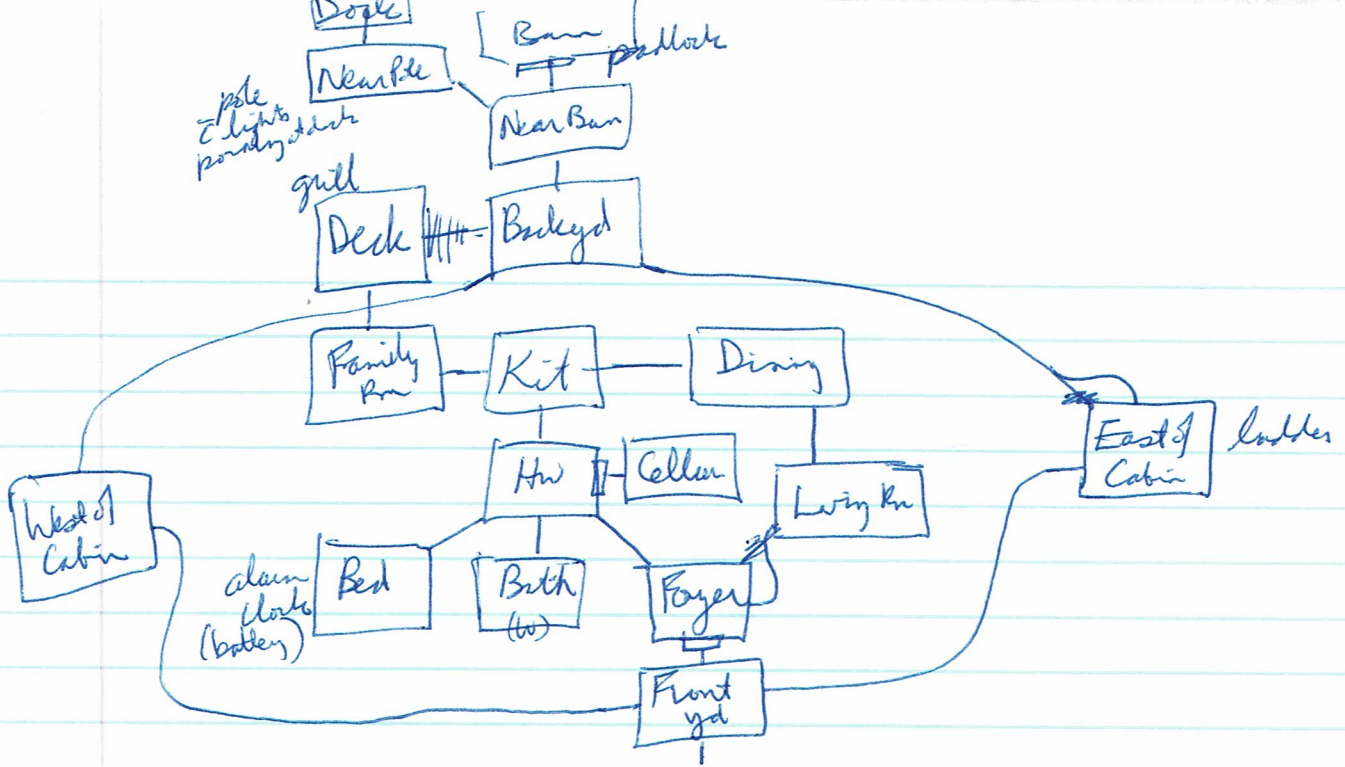
Deck



Kit = microwave, note, stove, fridge, dishwasher, recycling bin  
 note - left key in cabin of boat  
 fridge - pizza, che, beer (bin - 2 liter Pepsi, 2-liter Sprite bottle)

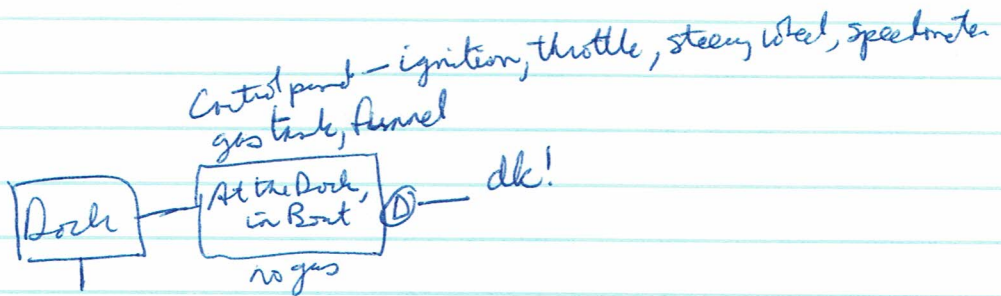


captured  
 by Jimmy



Cellar: flashlight, jar, portable TV.  
 ↳ battery  
 ↳ open compartment, put battery in it  
 (need 4 C batteries)

Bar doors are locked



left light points at dock  
 rt light points at boat

throw something at left/right light (not can or bottle)  
 knife