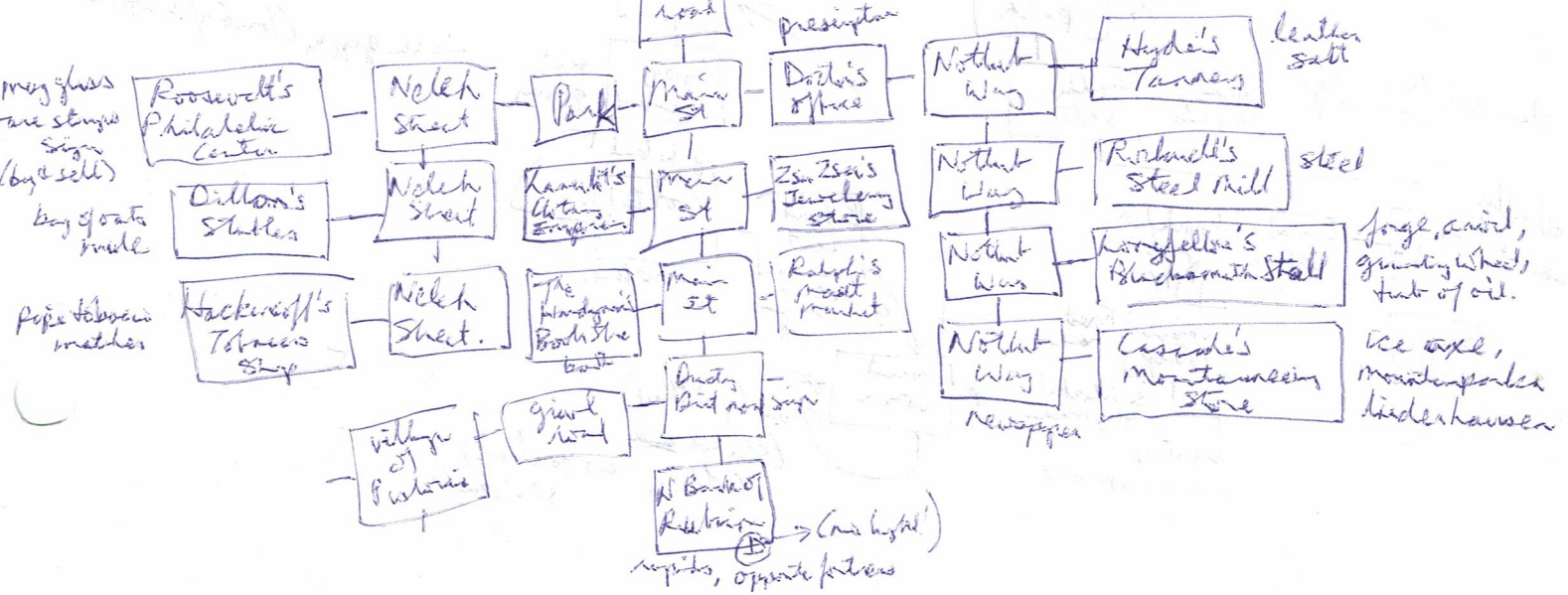
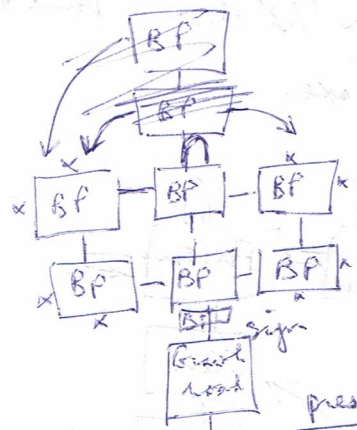


[Barren plain] N/S/E/W (open sand world) i {metal}
 need metal for valves to heat pump + storage warm (signal) Green
 (die 6 North) S.S. [Barren plain] N/S S → [Gravel road] Assign. N/S
 need sign [Fodli - 10km S] S → [Main St, Fodli] N/S/E/W S → [Main St] N/S/E/W S → die.

W of Main St (1) → [Small park] E/W, man on bank offers a bag in exchange for pipe tobacco. W → die.
 E of Main St (1) → [Doctor's office] preparation block, E/W E → die. Need pre (say caduceus)
 say caduceus (don't let her go?) E → [Notkut Way] S/E/W E → [Hyde's Tannery] leather, salt, W.
 S of Notkut Way (1) → [Notkut Way (2)] N/S/E E → [Rockwell's Steel Mill] Damascus ~~Steel~~ Steel, W

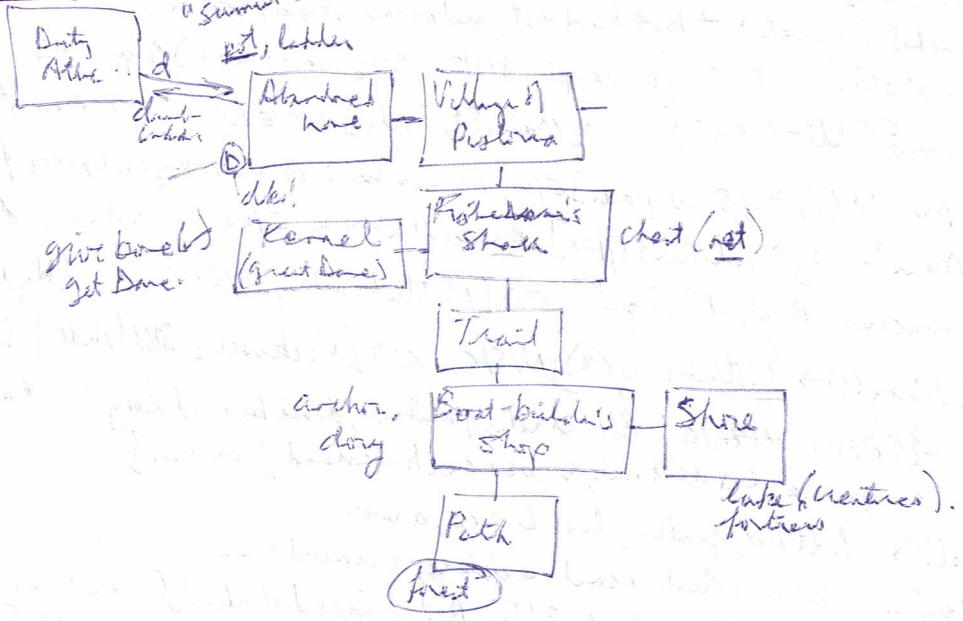
/// read newspaper - {GREEN DEFEATS! Behind river of Rubric, dead by evil Lizard. Reason that lizard's poisons are from a plant that only grows near his island fortress}

- /// @ hardware's: felt hat, jerkin, lace boots, armor.
- /// @ Zsa Zsa's: silver pistol, pearl necklace, diamond ring
- /// @ The Handymen's Book Store books { 'The Art of Sword Making' } (can't read it until I practice it)
- /// @ Rudy's meat market: fresh ground sausage. /// read sign @ Dusty dirt road { < Pistoia, > Death Mountain, ^ Fodli }
- /// @ North bank exa fortress: southern edge of marshy island; lightning trouble with



(Leave stamp on envelope)

aka other envelope (stamp)
"summit" written on pt
pit, ladder



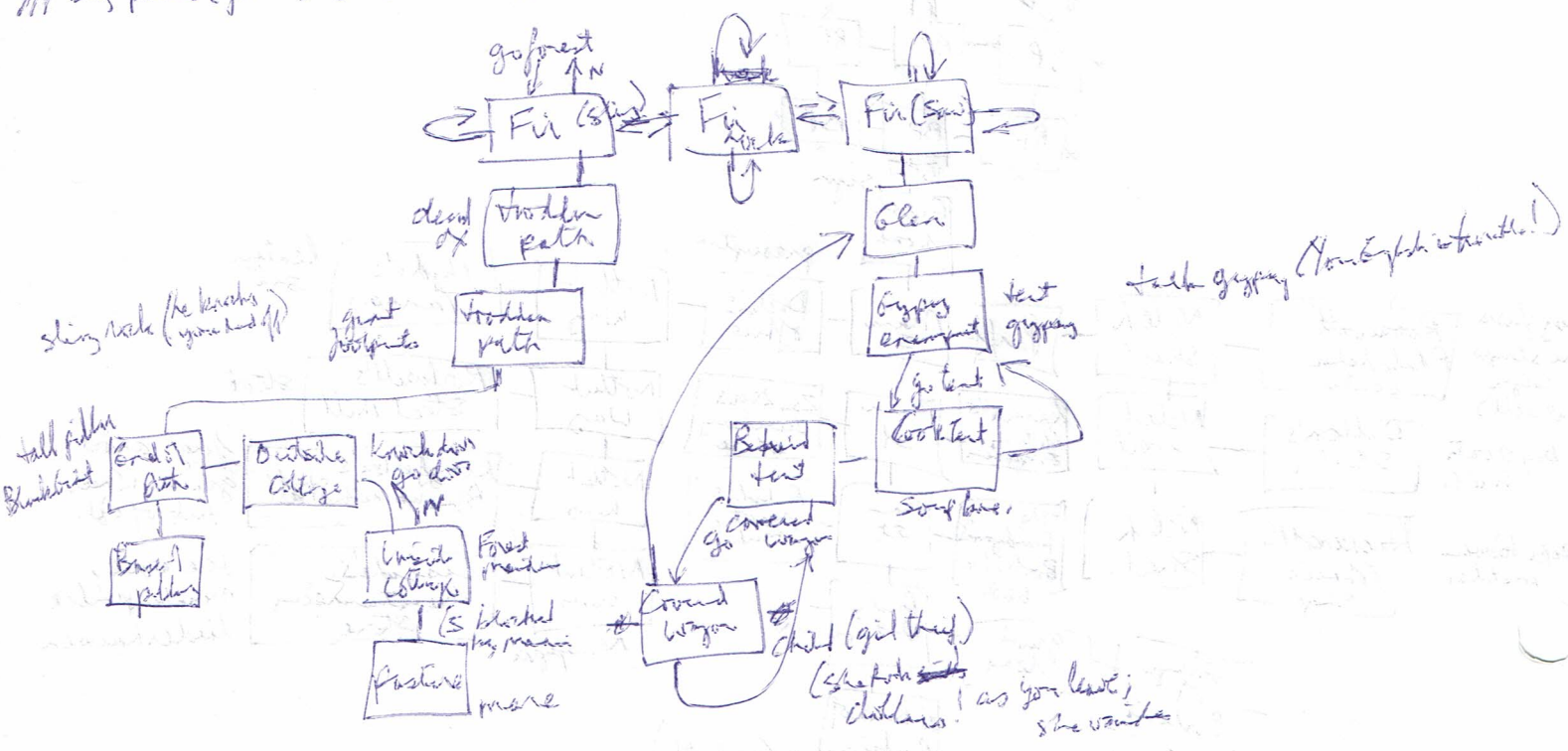
sell envelope @ Roosevelt's => get 10 silver dollars.

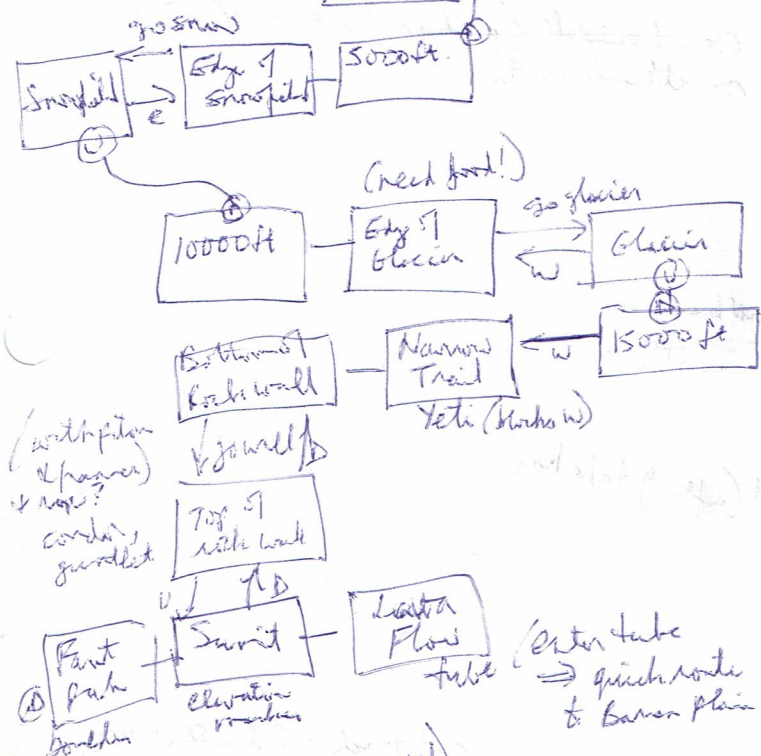
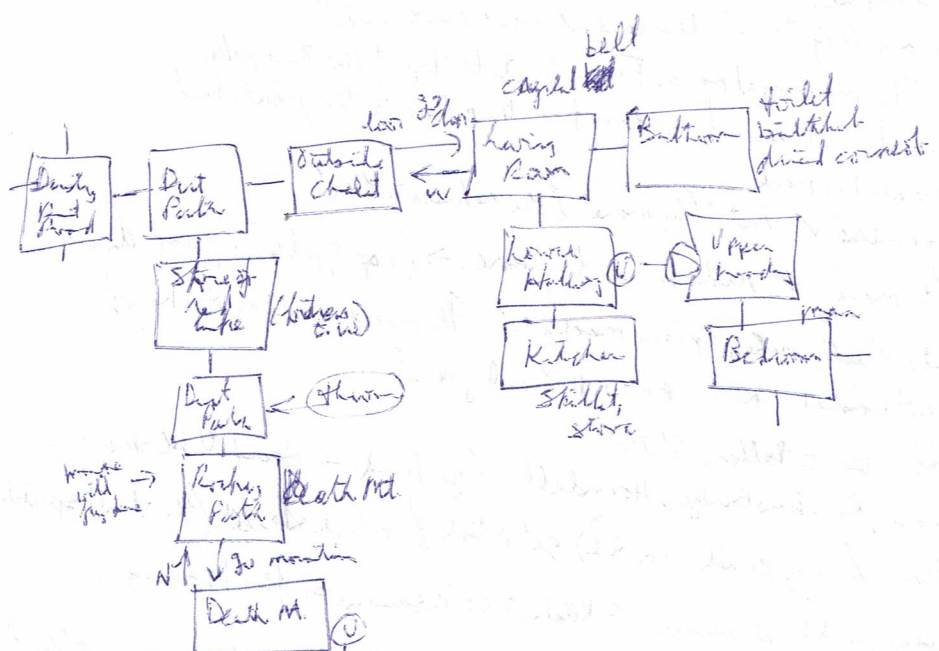
// buy tobacco (for \$1) get matches (OK) // give tobacco. (get key)
get tobacco.

// buy book (for \$1) get book.
 I Heat Damascus steel in a forge.
 II Pound steel on an anvil till flat.
 III Anneal steel in a tub of oil.
 IV Grind steel to shape into a sword.
 V Wrap the huddle with leather. wrap handle

// buy steel (for \$1) get steel. // heat steel (now 'hot steel'). pound steel (most smoothly)

// buy pulley (for \$1) get pulley. buy axe (for \$1) get axe.



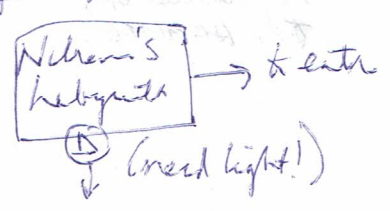


kill Yeti (with sword) ✓
 go wall (too wide & heavy)
 ext sawsage → regain strength
 go wall (need pitons)

get gawtled → Condo strikes you!
 Kill Condo → she carries you into a lava tube!
 (wake up at Banner plain (SE cave))

Read marker:
 "Elevation - 23,456 ft."
 throw net → to ~~Condo~~ Condo (ET GAUNTLET)

Go CAVE (too much stuff!)
 dya mountain: 23000' Snowfield at 5000' & glacier at 10000 ft
 open door, go door → [Chelid] // S of Bedroom → throw onto N/S dirt pit (but not by)
 // King hall (again, tossed!) // kill yeti: you have no sword.
 (2 items: gawtled, sword)



need boulder -
 throw no further west unless tykes
 be prepared to die. Only those of
 stout heart & strong arm - Nehrim.

The forest maiden:

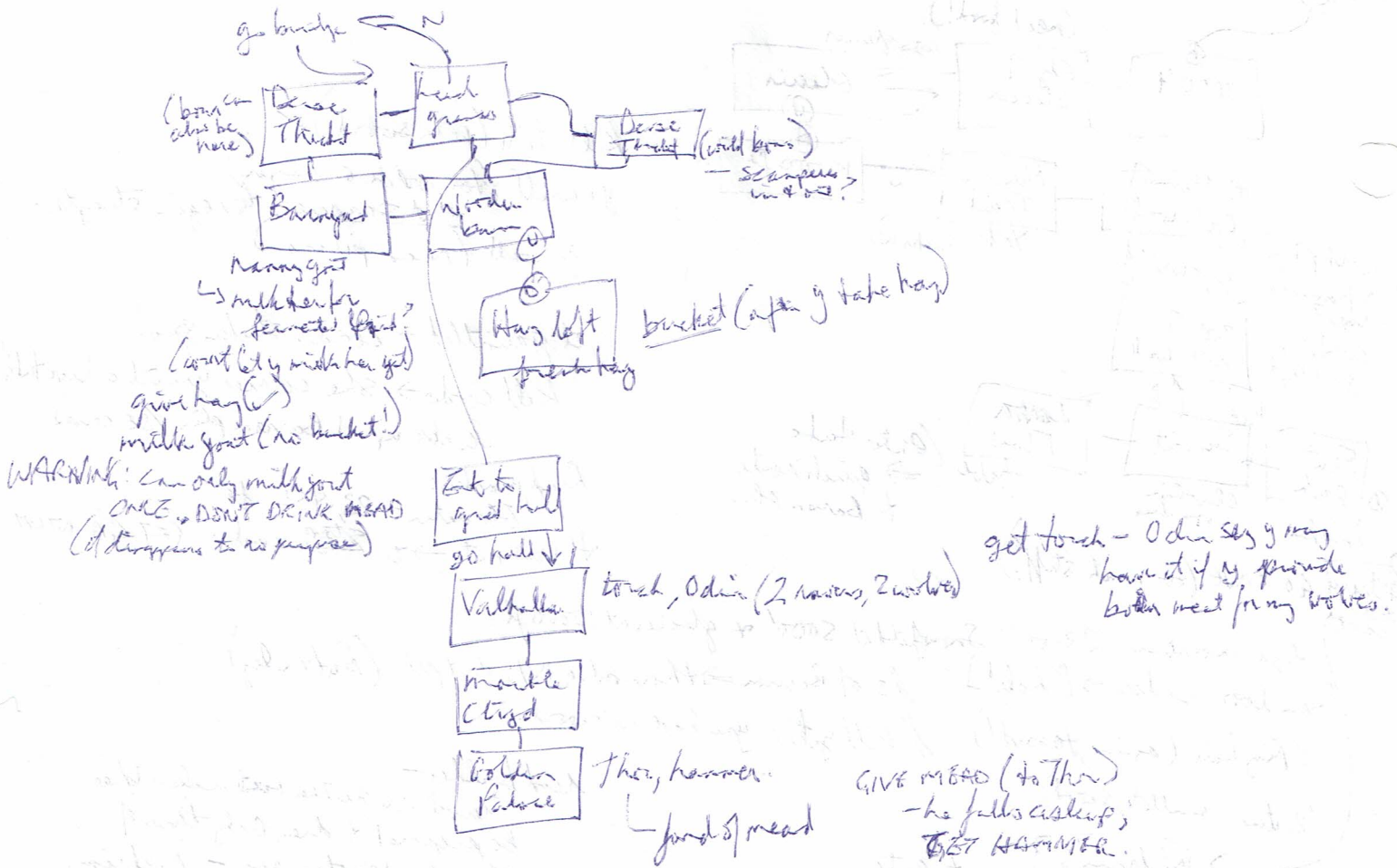
"Noble warrior, my name is Valkyrie. I will help thee defeat the dreaded Black Goat if thou wilt but give me the one thing that I desire but have never had."

kiss maiden - Thank thee. Take my winged horse. Fly on her to the top of the star pillar. The goat will be bawling. Jump down from the pillar onto the goat's head. That should break his neck.

(how to move the mass? "kiss me" ✓ but "fly more" [she refuses to obey])
 buy oats (for \$1) // give oats (to mare) ✓ ride mare fly more → [Top of pillar] jump down
 ⇒ [Base of pillar] dead goat, Goat's shield, mace, spiked mace, N. (the mace + shield are too heavy)
 the shield is solid sword + very twisted. N of y have a broken leg again

mare will fly to Kirby Path (by Dence Mt), then to Dalton's Stable.
 then to [Border of Asgard] mare, Rainbow Bridge, Heimdall. (go bridge → Heimdall blocks)
 fly mare → back to Base of Staircase. // buy polish (for \$1) get polish // polish shield (the shield splatters like red)
 y still can't take it // buy sausage (for \$1) get sausage @ Kitchen: cook sausage → fried sausage.

What part Heimdall to sleep? (leave necklace? ex a heimdall (perhaps it's a tired thing?)
 He sleeps on alternate vents.



(Spoken) → [Bottom of the Lake] narrow water door, v.
 locked from inside

knock door ⇒ Nihem's Spark:
 what be their name? ave

led to nearby name of the Forest Master? Valkeyrie (the door beyond)

go door ⇒ [] N/E Nihem's secret something, exit

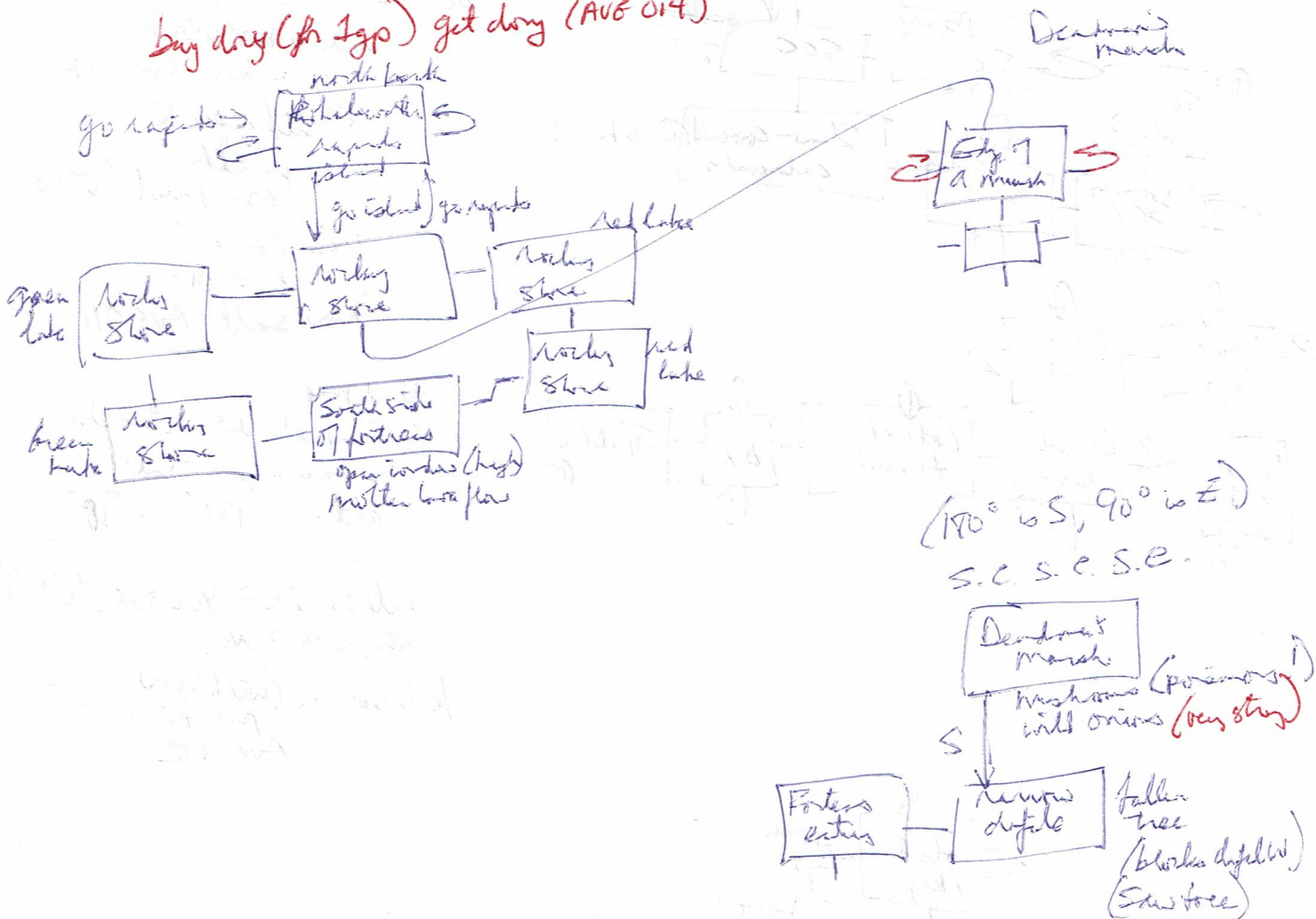
Winged sig: kill huge
 (1st) Magic Shield for needed strength
 Cross river

(Then) Traverse marsh to reach fortress.

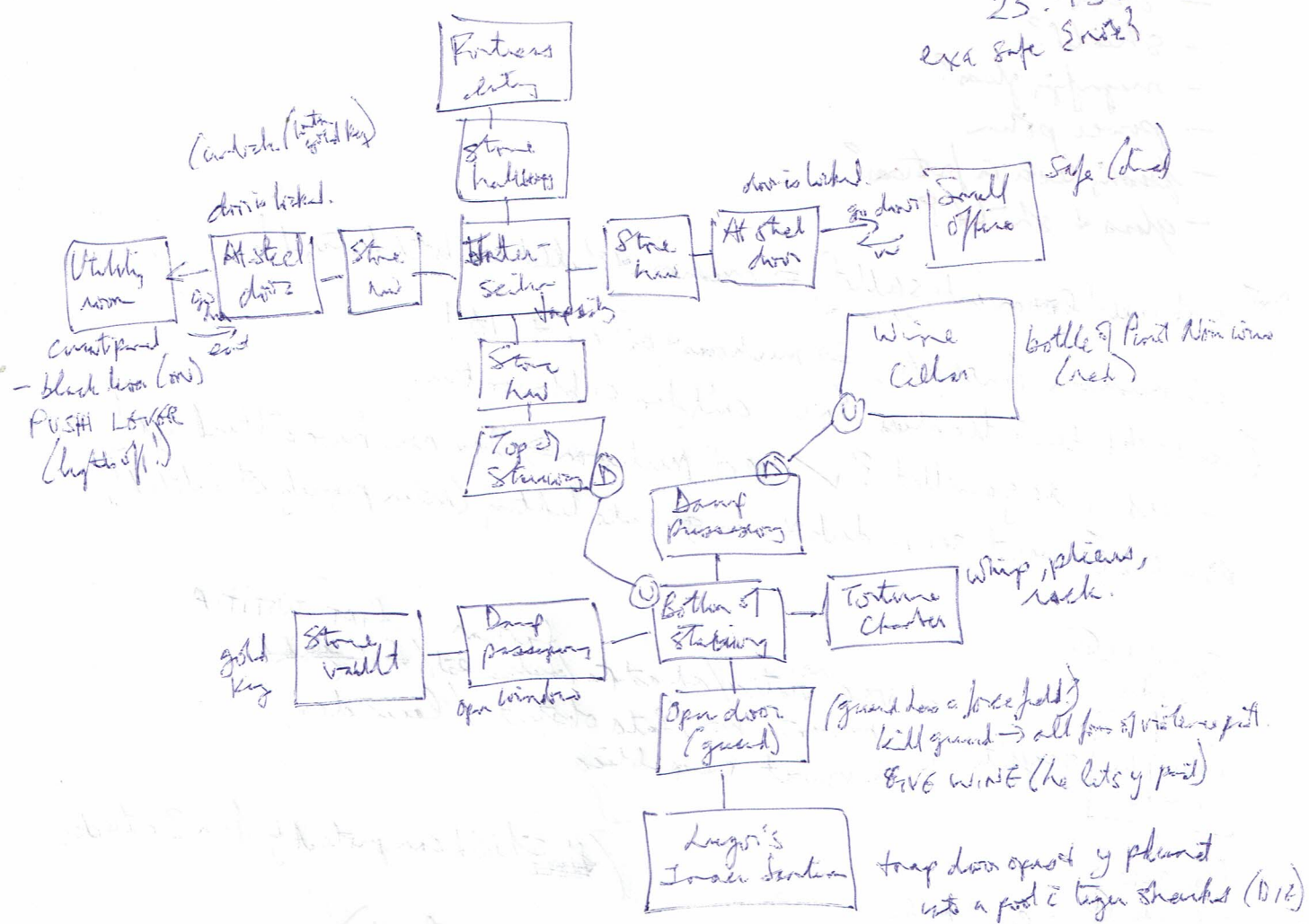
(Then) Shout the killing curse written in the Cave of the Winds.
 To heal the curse with sufficient force, y must 1st learn the
 secret of Leizer's awesome power. (Wing Nihem post away)

N → [Edge of Mittenlow Pass] S/D, fortress to N (d from edge → wind blows out tank!)
 (S) Secret to Bottom of Lake
 DRINK BUIR ⇒ strength is tripled!
 (can carry more or shield now)

buy dry (for 1gp) get dry (AVE 014)



turn died:
23.45.6 (✓)
exa safe 2002



need tapestry - may from another.

- read note:
Instruction for Preparing the Power Pot
I: Wash black mushrooms in the room.
II: Cook them over another hour.
III: Eat the mushrooms.

How to see into Caves of Wind?

- onion?
- shield?
- magnifying glass?
- power potion
- pushing leon in fortress?
- glass + shield?

Don't / cook mushroom (with skulllet) ⇒ mushroom + skulllet are both destroyed!

cook mushroom (with pot) ⇒ mushroom + pot are too hot!

{ can he take them in the pieces? } NO. can't join or blow on them.

take with gauntlet? ✓ eat mushroom ⇒ you now have a third eye!

3rd eye ⇒ power to see in dark + can generate lighting (when properly stimulated)



factum FIAT JUSTITIA
 vae victis / ad ad fin / ~~data est~~ / ~~est~~ / ~~graffiti~~ /
 memento mori / fata obstant / laus dei /
 vixit republica

(~~all~~ shield can protect y from 3 attacks)

~~STOUT CURSE.~~ FIAT JUSTITIA. (win!)