

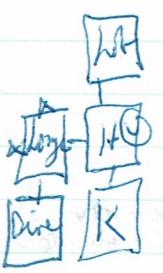
ABOUT, THANKS, HINT(S), HELP
 Peter will send poem by 'Steady Cook'
 - Joe wanted buried ten bk garden.

BISCUIT
 1996 by Peter Kanwisher

- NPCs walk in & out randomly.
 - No descriptions in room descriptions.

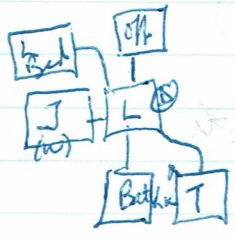
[large bedroom] bed, wardrobe, cabinets, cupboards, study, window (exit?)
 - Joe enters at time 5 (age 10-11, spiderman & metal ?, Tasmanian devil tie)
 ask Joe abt metal (I'll tell y after Joe had chocolate to eat)
 x wardrobe. x label. open wardrobe
 x Alison (dress) ask A abt Biscuit, Joe, Snowy
 (not found, alive, ~~just~~ coffin, chest.
 x window (garden, street, houses)
 ask Joe abt Biscuit (need flowers & proper coffin), tie £
 (not flowers, chocolate
 x cabinet (right & left) x right cabinet (right drawer (-)) x left cabinet (left drawer (-))
 x cupboard (t-shirt, jeans) take all from cupboard. wear shirt. wear jeans.
 e => [living] 2 bedrooms, office, bath & toilet, stairs, window, blanket chest.
 kiss Alison (this is more) x chest. open it (bath towel, hand towel, face towel)
 NW -> large bedroom, N -> office, NE -> X
 W -> Joe's bedroom [Living] E -> X d -> stairs (purple)
 SW -> X S -> Bathroom SE -> Toilet

d from stairs -> [hallway] (kitchen, lobby, ^S ^N ^W ~~hanging~~ pictures) photo, cat
 look behind cat (slip of paper: "357") - exhibit!



[Kitchen] x Snowy (collar & disc) ~~take~~ x disc. read disc. take disc (broom) [not pet!]
 take disc [+S; but worried!] read disc ("Snowy" & address)
 Snowy's message.
 - just eating around!

[toilet] WC; [bathroom] bath (mop & tip off, soap holder, bath plug, a silver chain, plectrum)
 window, basin (hot & cold tap, mirror, plug) ^{soap} rack (bath towel, hand, face)
~~stupid~~



[Joe's] bed, wardrobe, cupboard, junk & toys, books, window (see shed, roof of conservatory & attic, car, garden pond)
 (-) ^{small} green t-shirt & blue jeans
 x junk (Gatespace NCC1701D) x step (3 blind) take step.
 x button (phaser, photon, transporter) push phaser (light) push photon (explosion)
 push transporter (+S) -> jobless key (??)

Hilroy

[Office] desk, table, chair, computer, accessories, power, keyboard, wires, ceiling cord, tripod

x desk (drawer, printer, modem) open drawer (locked) - brass key doesn't fit
x table (computer, monitor, box, ^{external} drive, kets + pes)
x computer (monitor, keyboard, 2 floppy disc, keyboard, mouse, modem, printer, on/off switch)
x wire (external, internal) x switch (power, pull) - cord (off)
x tripod (floor) pull cord (click) light? red led + blk switch (off)
open tripod (needs tool) x window (st, next base, quarter roof)
open keyboard (long file) open tripod (+S, ladder)

a [attic] junk, boxes, bags, railway (w), wardrobe, shelves, well, door D.
x junk (medium box, large box, blk bag, green bag, grey bag, silk bag)
x medium (cardboard, {tiny box {-}}) open blk bag (-) green bag (-)
open large box (small wooden box (-)) grey bag (-) silk bag (-)
x wardrobe (casket (18" x 6" x 6"), empty)
x shelves (screwdriver)

w → [model railway area] railway, controller, plug, power socket

x railway (engine, coaches, wagons, vans, tunnel) see something
x controller (knob), plug (fuse, competitor), socket (led, off)

[Lounge] TV, player, settee, chair, table, drawers, wardrobe, window, doors + dungen + hew, grasshopper on fern. (Eerie hides under log?)

x tv (Morse cassette) x Eerie (pet lizard) chases grasshoppers.
x fern (in tank) x tank (dirt, fern, log, sand, grasshopper, lizard)
x log (hollow - but locked open) x table (2 drawers - top drawer (-), bottom drawer (Tekromon, cassette))

Morse → Allison's, Tekromon → Jick

discovery → topic is funeral rituals

x player (on/off) x chair (w/orn or confj?) x conf, (Discovery cassette)
x window (front garden, lawn) put discovery in player.

turn on tv. turn on player. (w/imp deceased in clean expensive cloth.)

2) put it + gold trinket in wooden casket, 3) bury casket.
4) put flowers on grave, 5) read words from parchment.)

- 6) itenshu?

- can't open table.

scratched, marked, plain, damaged
 PL FR RL RR

[dining room] table, chairs, dresser, bookcase, picture
 x dresser (on - Babecassette) L 3 shelves, 2 books (notebook, party)
 'top, middle, bottom (if put on top of case study)
 x top shelf (book - "Living for Your Eyes") take by hand
 x middle shelf ("Ancient Cultures")
 x bottom ("January") take pretty
 take note (not notebook) x words (by Stanley Code)
 ask A abt title (Perhaps can use it for Bassett's build den")

[Office] Turn on computer. turn on power (VIEWS Arch. Pls see anti virus software)
 x icon. check icon (use antivirus disc) Ask A abt computer.

[Kit] coffee, sink, cupboards, work surface, freezer, fridge,
 tools (kvs, party, passage, dining Room), Snowy.
 x sink (cutley down, in bowl, plugs, sink top)
 L (spoon, knife, ice-cream scoop)
 x cupboard (wooden food) - cut comfort while Snowy here
 L sundae dish, glass bowl, cat dish
 freezer (~~ice cream~~ tub of ice cream, chocolate)
 take scoop, take sundae take ice-cream (ice cream in dish)
 close tub. close freeze. put snow in sink. take spoon. put spoon in sundae.
 fridge (empty)
 give sundae to Joe (=> he give you small retail bag + \$)

[Office] unlock drawer i key. open drawer (disc (programs) ^{Internet})
 open box (game disc, workbooks disc, clipart disc) / turn on mouse top

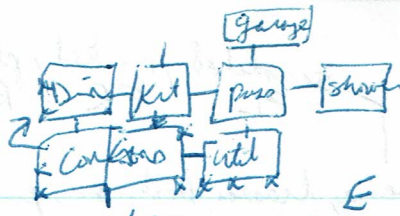
[kitchen] ~~go~~ go: (garden, kvs); breakfast, coat hanger
 L locked L small + large
 x small hanger (anorak + bomber jacket) bomber is too small

x large hanger (blazer + fleecy jacket)
 1. leaving before printing of text? That what be fair now would it?

[party] shelves - packet of cat food
 open packet. put cat food in dish. take dish. drop dish (+\$) - & spray leaves? (to re-cupsting?)
 open food (cupboard) - oil bottle } Spoons in large bag below



ask A abt me, Gene



closed french doors between Dining Rm & Conservatory

[passage] connects garage, utility, shower, kitchen.

[shower] shower, toilet, basin, medicine cabinet.

↳ mixer tap, showerhead, soapholder, drain hole

↳ bar of soap

x basin (hot tap, cold tap, no plug), toilet (leak, lid)

open cabinet (tube of antiseptic cream, plaster)

↳ take all from cabinet. open tube

take disc. g. (+S, wound) put cream on wound - put plaster on wound (+S)

drop tube.

asked A abt Gene (if suppose he wants fedj again?)

[garage] prick, plastic toolbox, metal toolbox, brown boots

↳ changed rivets

↳ empty

open bottle. put oil on hinges. (+S) buy bottle. open plastic box (new fuse)

[utility] washing machine, dryer, sink, cupboards, work surface.

border, window.

x washing. (work surface, 2 cupboards, side)

x sink (drawer, board, hole, tap) open drawers (plant ties)

x ties (multiply!) x tie. x packet. work in packet. (5 ties)

crate put packet in ash

x cupboard (wooden, wood)

take silk.

put silk in washing machine

empty empty.

close washing machine. turn it on. Z* (it will stop after 210)

open washing machine. x silk. take it. open dryer. put silk in dryer.

close dryer. turn on dryer. Z (+S) take silk x it. put silk in cabinet.

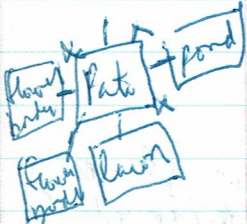
(it's now dried!)

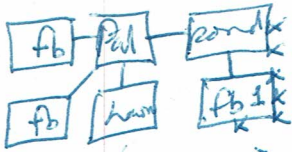
[conservatory] open packet. take tie. drop packet. put tie in cabinet.

french doors N to Dining Rm, Patio N to S to Patio

[patio] prick, post, lean, shed, gate (need to wear boots post his point)

- also - can't wear boots thru the house.





can't sit out.

[ford area] pond, greenhouse, low wall, fish, rabbit hatch

↳ plants, fountain, frogs

↳ filtration unit, pump (filter)

x hatch (single door & wire door) open hatch (recently hatched) open sleeping (-)

[flower border (1)] (S of pond) herbs (onions, garlic, others eg mint)

[vegetable plot] earth

[flower border (2)] (W of lawn) plants, bushes, tree

[shed area] door (locked)

[flower border (3)] (W of patio) plants, weeds, bushes, bramble x flowers (flowers or daffodils)

bramble needs to be tied back.

[garden shed] fork, spade, rake, hoe, trowel, secateurs (pruners)

[model railway area] x blown (not old or burnt) fuse

take screwdriver. take blown. (screwdriver MUST be in direct contact)

put new fuse in plug (+5) drop blown fuse.

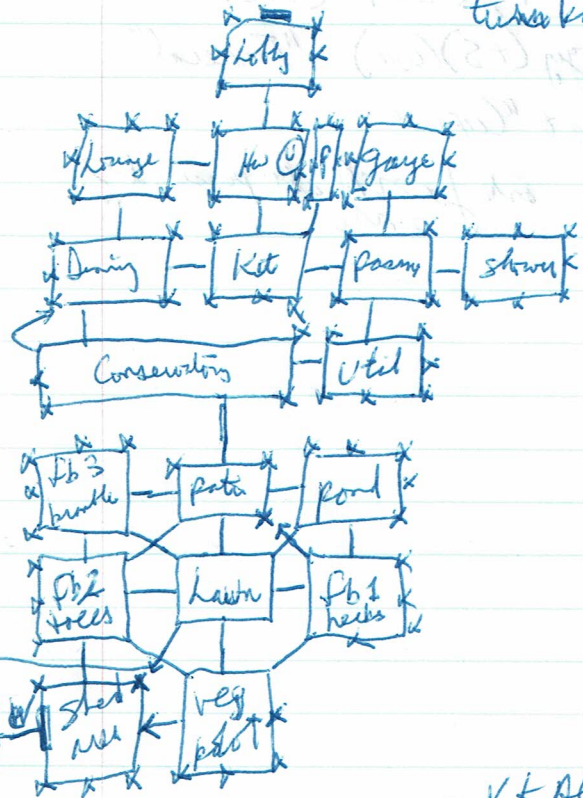
turn on power. put plug in socket.

turn knob (train comes out of tunnel)

- engine, coach & wagon, station

↳ rusty steel key

take rusty key (+5) take plug. turn off power



hitting spade at fb2 - dig hole with spade (+5)

@fb3. take tie. tie bramble with tie. take daffodils (while hitting secateurs) (+5)

NOT cut daffodils or cut daffodils + secateurs. (now at 10pts)

give X to Alison (never get X back).

always

open hatch. take rabbit. put rabbit in sack. close sack?

close cabinet.

put cash in game (at 2) Alvin, Joe + Snowy appear. (+20)

put flowers on grave. take book. (conting)

read poem in book. (Nice ty. Perhaps I should look up Cook or Summer?)

look up X in ancient (X = culture)

look up X in note (X = internet, computer)

look up X in woods (X = cook, summer)

look up X in lizard (X = lizard)

unlock briefcase c brass key (unlocked) - it opens both drawers AND briefcase?
open case. X disc. take it.

put antivirus disc in internal drive. turn on ^{power} computer

click icon (+5) click inspect. click internet (changed; need disc)

put data disc in external drive.

click internet icon. X password. type 357 (+10)

X password // at grave: read eulogy (+5) (win) "Funeral"

game disc (click inspect) → refers to "Curses"

wordbook disc (nothing, ready)

clapnet (nothing, ready)

ask Joe or Al abt password?
or note