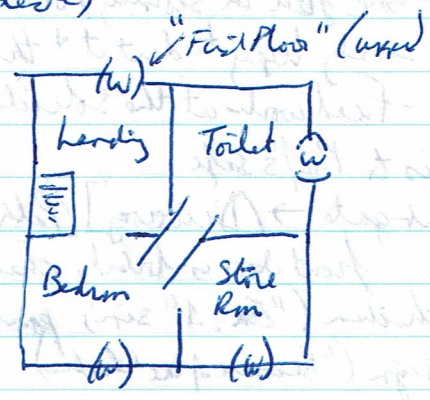
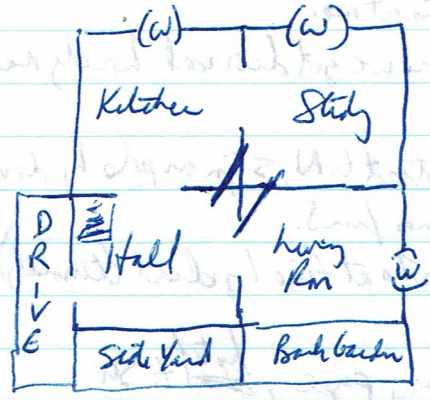


x telegon  
stolen key, house plan  
Break-In  
> victor, #448 (lewe reti becon on desk) x transmitter (surtel)

plan:  
(ASCII graphics)



x mission sheet  
Subj: Prof W. Matheson  
What: B. 1958, was at Cambridge etc.  
Addr: 23 Bombay Mix Street

Office/Reception st to NE, card, desk, tree in pot  
x card (Abell & Co. Book at reception or telephone 4541)  
look under desk (yellow paper)  
read yellow: G P R C Q H B S T L N U A D I M B Y Z X F W O V I C J  
take tree (branch break off)

out → Carbonsare (car on kerb), rd Z+W  
x car: open car: enter car → [Bombay Mix St] (runs SW to NE)

Driving to hse is S, gate is shut, fix hydrant, photographer (canes)  
(hear birds, see booth, woman, says 3, wounded)  
x man: "Hung for th, Bizarre Weekly"  
booth has retractable roof (woman has wallet)  
x says (man's weird gadget) x gadget (copper streaks, black casing, button, flap)  
wake says ask man abt gadget (antiphase construction demobilises; lost its cap)  
ask says abt cap (power source, looks like a cherry)  
ask says abt Professor - Prof rarely comes out; had a divorce, Saw Prof when delivery man came, knew Prof a few yrs ago, professional differences.  
ask says abt photographer: Moody; here abt Matheson's, chicken thing.

interests  
worse

ask rap abt woman - she has a phobia. W activated it.  
- she fell in swimming pool? hid key in coffee pot.  
- only trying to dust it + things shoots at me!  
- Fuel works at the solenoids where we got divorced. lovely man.

- key is to Pat's safe.  
- chint gate → [Driveway] (Path to S, Street to N, sign on pole by door, front door is locked, chicken comes from S.)

x chicken ("Ex. 4" sign; pants; looks at fire hydrant (tumbler))  
x sign ("Beware of the Chicken")

S → [Side Yard] tarp, hose, window, pipe, ~~side~~ <sup>hatch</sup> to SW

E → [Back Garden] shrubs, plot, downspipe up to roof (close to 2nd story window)  
path W + S (between trees)

x plot (small green shoot) x window (open)

S/U → [Crown Entrance] path back SW. 40 foot (chicken, cart (soil))  
~~The chicken flies + breathes fire like a dragon, ~~pecks at its back.~~~~

chint downspipe → [Stone Run] (+3)

rug, junk, crate, socks, cupboards (W), photograph (W, door)

x rug - forest scene? (stay) x photograph (Albert Einstein + wife)

(then patter from roof) open crate {green christmas crackers}

x crackers ("Physics Crackers", "Dress from the Big Bang")

search sacks → red crate open cupboard {blue crackers}

take red (+2). take green (+2). take blue (+2)

look behind photograph {cream crackers (+2)}

x cream - weights same as dog. "made in Taiwan"

pull blue cracker → pristine mitts, small metal cylinder, blue party hat

x mitts → cross atom  $\bar{c}$  beta radiation? An ion! (c) 1991

x metal → ariel out of top, copper plates on other base

pull metal → teeth? Touch it to something else?

open red → rumpled mitts, metal ring, red hat

x rumpled mitts - Why did mirror + the metal reflect differently (refraction)

x ring (small circuit etching)

open green → tatty mitts, metal cube, green hat

x tatty: Why the long fur? Looking at me in a convex mirror! (c) 1991

x cube: copper plates

rw → [Main Knave's Restant] Umberto Elskin (bulge in pocket) (door SE, st W)  
 give glass to elskin (+1) auto → Kuberko  
 e → Concrete Yard (st NW, U to roof) (Must go down drainpipe to get pliers)

open panel. cut wires & pliers. (+1)  
 hit elskin (+1) search elskin (take device) hit elskin (+1)  
 x device (gadget for breaking codes with) - and all you need.  
 To use it, open it & place typed message on the panel.  
 take all (code-breaking device, rucksack)

open device. put coded message in device. close device.

put string in door (!)

(ring of cylinders = telescope)  
 cube + cylinder = cross

search papers in study.

n → [Inside the Chicken's Cave] unspectable pile, boxes, rock, chest.

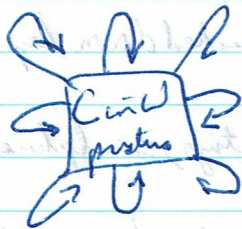
x rock (looks comfortable. food in place)  
 unlock chest & ruby. open chest. take plans.  
 x plans (hair spray powered rocket?)

put gadget on rock. push button push rock.

D. [Underground Tunnels in Darkness] monstrous nest wall. (two dark passages)

NE → [UT and D] chunk of light N (fall back)

chunk better → [Cleaning in Wood] flowers. Paths in all dirs.



sit on rug. → [Tree Top] all possessions disappear!  
 ash tree

U → [Veg Top of Tree]

forest mainly SE  
 know path SW for tree, then  
 N to castle.

grains curve around W side  
 something glitters further N.

E from Tree Top (get rug)

D → [Root of a Tall Ash Tree]

x tree ("Press For Service" ground)

push ground (ignore inside tree say "You'll do")

§

Sw → [Kitchen garden by Castle Wall]

castle, bushes, shrubs, path S, (hawthorn, tans E, brambles)

search hawthorn (note) x note: Drasel needs resin from high window.

W → [Chokley next to castle] fountain, flower, bowl

flower is a crocus

W → [Walled Track] mist, flagstones

[Start of Windy Rd.] chain, dog, column of ice on castle wall

touch ice (water on other side)

enter ice (dog stops you)

[LH] x bumbles (green berries) search bumble → old bone

@ dog throw bone (dog yaps in valley etc)

(Enter tree) [Go to Ash Tree] d. [Darkness]

[Rocking] x rocks, x rock. throw rock at window (rope lowered)

climb rope [High Tower Room] door in west wall, girl (+10 pts)

- no carrying girl. no ominous adverbs. no complaints.

girl, west. girl, yes. (+10)

W → [Turnet Room] bed, arches N, NE, door E, arrow slit S, sword above bed.

look under bed (metal sphere in reeds)

N → [Top of long staircase] (S, D, stamoglas window N)

x window (with 3 spheres in triangle, arrows sucked down by constant gravity)

foot smell from NE of Turnet

D → [Grand Hall] stairs U, doors E + N, paintings, sculptures, wheel for door by W

E → [Throne Room] tapestries at ~~P~~ sides, stairs D, throne, dais, cordelabrus

x throne - base, skull, rat, seat, flame back

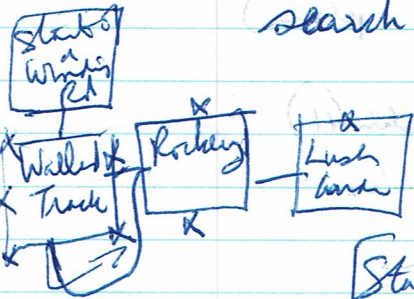
x skull (attached by spittle)

x tapestries (man conceals crown in the throne)

look behind tapestries (large stone key)

D → [Castle Dungeons] shackles, moss, barred door

take moss (cawings) "Crispo. Next line, add water to potions. Grapple."



turn skull (gap opens in base) look in base (2adsphere) take sphere.  
N of breadths → [Castle Kitchen] worktops, tablecloths, doors E, S,  
two torches, well. x well.

turn wrench. look in basket (store box) unlock box & key.  
drop box, key. take sphere from box. drop note.

E → [Laboratory] statues, dragon over west, must/gas, purple bottle... (gas)

take bottle (bored in paper) & paper (chemistry with Earth, Air, Fire, Water)

push paper. take bottle. "Noitop Tsur" (if the liquid provides light)

turn wheel (steel) & rope.

put ring on bed. put spheres on bed. (+10) sword has skewer right bed  
pull sword. cut rope & sword.

W → [Walled Track]

[Fort of Spiced Steins] altar "Festival Day" sign, crutch in E.

x altar. Rattle chickens dead here, & "they" will respond.

x ropes (chickens hang by feet)

pull ropes (gnome gives you a spike to kill chicken) (+10)

x spike (3" thorn twisted like a screw; gnome gives rattle)

x rattle (model chicken & pole stuck in it)

wave rattle (gives you chicken pin badge)

wear badge (7' wooden chudun & large lever on back)

pull lever (gives crown; dies)

~~cut~~ open bottle (sealed & cork) open bottle & spike.

pour liquid. fill bottle & water (once more glowy)

throw here. pour liquid on chin. enter cc → [Insd Telephone Booth]

conyignotty. At [Site Yard] all lost stuff

[In hwy km] push heath. d. [Propshub]

shell, panel, jammer — Coupling, ariel

↳ square btn & thin slot; shelf empty.

disconnected Coupling — cant write ariel broadcasts greater than 3m.



[Chair] put board in slot (btw floor joists)

pink bta (+2) object appears, board disappears.

x shelf (plant pot) "K.G.B. Kensington Gardens Bogers '93"

take pot. put pot on jammer. open jammer.

[Abandoned Warehouse] doors W, man

- empty field = chdn 1
- use wallet to foil ch 4

sub cube on cylinder (+2) → metal cross  
sub tray on cross → Metal bracket (pulses with blue energy)  
U → Roof (ground, hatch, "gadgets below!" (+5), breeze)  
open hatch .D → [Toilet] furnishings, mirrored cabinet (closed)  
door oppo window . x window (see Red Plinth Rd, parallel to Bombay Mex St)

look up timber in book - ~~from~~ by Dr. Howard Cobblers.

open cabinet { little of talcum powder }

SW → Bedroom (bed, dust? doors N, NE, E; S window travel rail, (loopy wire))  
window closed, plump pillow, cabinet closed.

(bed can be moved slightly; too dark to see under!?)

x case { plate - shiny silver 30 cm across, flat, 5 cm rim }

look up matheson in book (disappeared in 70s + 80s, removed working  
on antiphase construction demobilizer and the ThRi.)

look up demobilizer in book (~~detaches~~ trips at atomic level)

It works ~~up~~ by putting it on top of obj to detach & turn it on.

Rugenstein built one i ~ nuclear fusion cap.

in Rugenstein - back in Russia, now bk in Engl.

in cap - red & wood like cherry; fuses H into He via a C14 compound  
which is lethal to touch & kept in plastic bubbles (not to be kissed)

in ThRi - Thermographic Recorder creates circuitry (eg. costorage blocks,  
& circuit stamp boards)

in blocks - stores circuit board info, promised by KGB.

in circuit board - tungsten - priestinimally derivative i Chromium-20  
over polyhexa (etc) for base for circuit cards produced in a ThRi

put bed. stand on bed - open cabinet (locked)

N → [handy] ~~etc~~ (window N, door S, stairs D, pedestal)

- see booth thru window.

x pedestal (machine - red & green lights, slot piece, cubic indentation  
put timber on pedestal (& did slide across)

"Can't you restrain your desire for a 'Beware of the Chicken' sign  
just for this game?"

d → [Hall] Carpet, hanging, painting, (windows) door (locked), wallpaper, stairs,  
doormat, parcel & string

x parcel (curtain) open → 20 cm glass, very deep

x door { brass letterbox } open

x string (3 or 4 metres)

n → [Kitchen] worktop, window, vinyl floor, cupboard, glass bottle, notes

x notes - Ex 3 judges specimen on crest above. hog back.

- Jen has phobia of spilling stuff on her.

- Not normal tidy

- Lost Ashin's Crackers Again High

- house, hose, string 10.76 feet.

- kept in garden; lens of physics looser in new garden

- Don't give money to rival (reysman)

x glass bottle (thin glass, wide base, thin neck, abt 2cm diam)

open " (you cut grip the cap)

open cupboard { can opener }

x window { see Rawgitt Rd - from which  
Bombay + Red Plinth branch }

e → Prof is in study (he doesn't see y in kit)

[Living Room] armchair, fireplace, telephone, table, window, log

x telephone (label) - TEL 4457

x fireplace (mantel, grate, chimney, concrete, hearth)

(my phone 4341)

m [Bedroom] tie string to rail, open window, put string through window

at [Side Yard] tie string to pipe.

m [Bedroom] pull string (pull up hose, untie string completely) (+10)  
tie string to waffle!?

[Dewey] x hinges. break hinges & pull gate.

Chicken (Ex 1) goes out into street, & phlog runs away.

[Bk beds] pull shoot (model/pencil of orange alien in green lens?)

arms of different lengths & core ends, incl hat. x alien (can't)

x hole [dirty key]

x hinge (string)

put key in door - Ex 4 snatches key!

(cut key, hinge)

wear head hat! (to enter hall)



[Inside the Chicken Coop] Wlet NB, pt chicken on small net (+3)  
& nest. take torch. x look (Bilbo "Thank you Mathestondei")

tie string to sack. pull string (get underneath)

look under bed (with lock on) -> slip paper.

x slip "Vc: 4341"

Bulb cabinet ~~is~~ not unlocked & dirty key. (it dont open front door, either)

x fug (@ Caerwyn's) buy pt & new, fatten & herb  
sit on rug -> mid-air crash in kitchen! (in cupboard)  
-> rug goes to Side Yard.

show cream legs -> That is a current steps board.

put cream under in slot (of pedist) -> small board shoots out to floor.

x board (beige & carefully impled current on surface)

[Toilet] [To fill sandy at the side, type Full (iten) FROM TAP.]

give pillow to regs (man) (+5 pts) take gadget ✓

(pts for hoisting up a horse)

update log book?  
put normal?

open log ✓ (log is a log book, agh)

- memory swap machine. 1) Dog 2) Guard 3) Dragon 4) Muggie  
#3 malfunctioned.

- Elskin laughed.

- for asking for divorce, her work is Anthropology. Had jug of water spill on her

- Gave wrong key.

open small bottle (take on hands) - open glass bottle ✓

(pull up hose with string) put pipe in bottle. [Side Yard] turn taps

take glass bottle. take hose. drop hose.

[Chubby] pour water (+8) - she talks off Malteson. (he has a front door key)

[Bombay Mex Street] open booth. in [Inside telephone Booth] wallet, phone.

take wallet. look in wallet & silver coin Yale key ✓

take coin, put coin in phone (telephone, dial 4457 (+8 pts). drop receiver

Study is dark (need torch)

Study - feel watched, painting, <sup>blk</sup> box (orcaday), dk patch near N wall,  
white area, blacked windows, paper, desk, <sup>of carpet</sup> chair,  
x painting (humble, woman sitting, nice frame)  
x ornate frame (2 hinges) look behind painting  
lock (on NE wall - small notice) x small notice - "Dear Buryan, I wouldn't  
like a safe behind a painting, that's the most obvious place in the world"  
x papers (Gunter by mag) x desk (lettered e papers) (notably undisturbed)  
x carpet (checked? heat?) x box (matchbox size, NE of SW,  
end furthest from door (NE) is shiny.  
x white area (camera lens in frame, wire leads down to skirting board)  
x wire (continues under carpet into hall).

[Hall] x wire - goes up landing

[Landing] x wire - runs to thru hole

[Toilet] x wire - goes under the curtain. (to black box?)

tentative (reaching safe)

- trying to get at safe w key (laser bolt!)

[Return] unlock cabinet w stolen key. ✓

put disc on plate (super mirror!) (+6)

put mirror on lens (best not) put mirror on patch.

unlock safe with duty key. (laser hits patch & zaps box - IT'S gone)

g. open safe (scrawled note & ruby key) take all from safe. take mirror.  
x scrawled note: Council of Fentayffland have been put in chest  
in cave where chicken is. The key for this chest is in cave.

Are there empty?

— need to put something that blends in the wall

put X in cart (not cap, mirror, brush) gadget. not gadget  
cm opener, wallet, sack

Buryan  
chit key → [Top of lamp-post] deep. [Back of the Greek Restaurant, (Clapham)]  
drainpipe, skylight. d [Covered Yard] (mud, pliers, U or NW)

S → [Start of Bazaar St] (coin) take coin. ~~can~~

unscrew skylight with (4) open vial, enter skylight [Restaurant Kitchens]

(glass of water, apron) wear apron. pour poison over glass (+1)