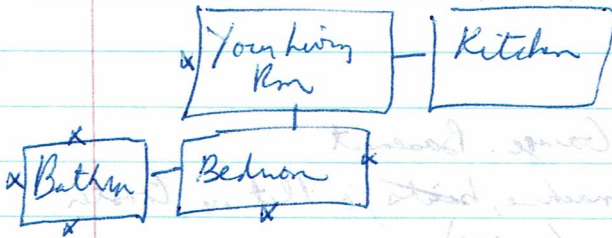


GOT TOAST?
gottoast.25

promised bacon, eggs, toast, pancakes, syrup
scorched



Close (brown) "Ezlvot"

Remember grandma, Guide (cat)

Kitchen (refrigerator, outlet, table, counter, toaster, breadbox, Beth)

Empty

diel (raw, light, medium, dark, black)
cord

put bread in toaster

plug cord in outlet.

turn dial to medium

push lever

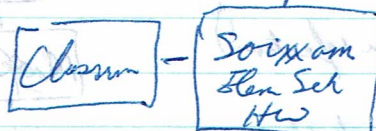
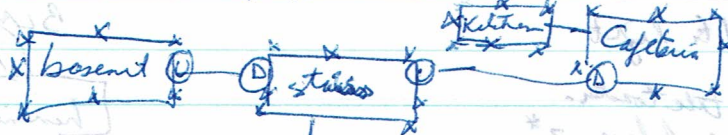
(when toast pops → Classroom [-999])

mount/dismount broom

say ezlvot (to start + stop)

medium → Classroom (graffiti, desk, outlet), toaster

e: graffiti (in school office in locker 531)



lockers (open locker 531 → all signboxes)
signs (N: Stein, Cafeteria, Santos & i)

to Member's Office, Gym, Teacher's Lounge, Exit

Basement (fuse box "PRIMARY POWER CUTOFF" Switch)

turn on box (lights + ventilation)

Kitchen (cabinet → bread, strips of bacon)

(precooked + cellophane sealed)

9 52A07 502
25 2007/08

"light" → Crown Kitchen (Medusa, ^{board/simble} eggs, apron, bread)
 sitting (prange N: _____)

"dark" → Mexico's Pizza Palace / Closed Garage: Basement
 car parts, table, chair, refrigerator, machine, heater, outlet, in toaster
 - Leadlight / car battery capacitor (on/off)
 - open fridge (bread, bottle of syrup)

"black" → Wizard's laboratory
 picture frame & dial, bench (bread, cup of powder, recipe paper)
 one-eyed blender (black ball)

paper for "Mortal Panishes"
 (all but last step "add luminous salt crystals" has been done)

- Frame (dial is same as on toaster, mirror)
- [turn from to dark → see toxicat refrigerator]
- [turn from to raw → see yr. boy's room]
- [turn from to light → see hole that spits out electricity]
- [turn from to redium → lockers]
- [turn from to black → mirror]

turn toaster dial to light

wear sunglasses. take toaster. push lever. 2*
 show toaster to medusa (she sees her reflection!)

Crown King Run Cyclops & axe, couch, table

put salt in cup → pile of pencils

