

Aunt Elizabeth died 3 wks ago; left all to you.

Did she pity yr facial blemish? 'She is well-suited for the task.'  
 ABOUT. CREDITS. INTRODUCE = TELL x ABOUTme

[Front Porch] door N, yards E+W. Albert whittling, fishes in pot.  
 x Albert (gardener). x one (left side of face like relief map) i { }

ask Albert abt aunt - That woman had - devil in her!

ask Albert abt fishes - wheel to hide spare key under it.

look under pot - (take key) x it.

unlock door i key. open it. N. [Living Rm] (+5) couch, chair, fireplace, painting  
 E to Dining, NE to Kit, hall to N

Dining Rm (table, chairs, benches, piano, flower arrangement)  
 (add table + stool)

x rock. x pedals (decor?) x table. x letters (horrible, terrible, culpable)

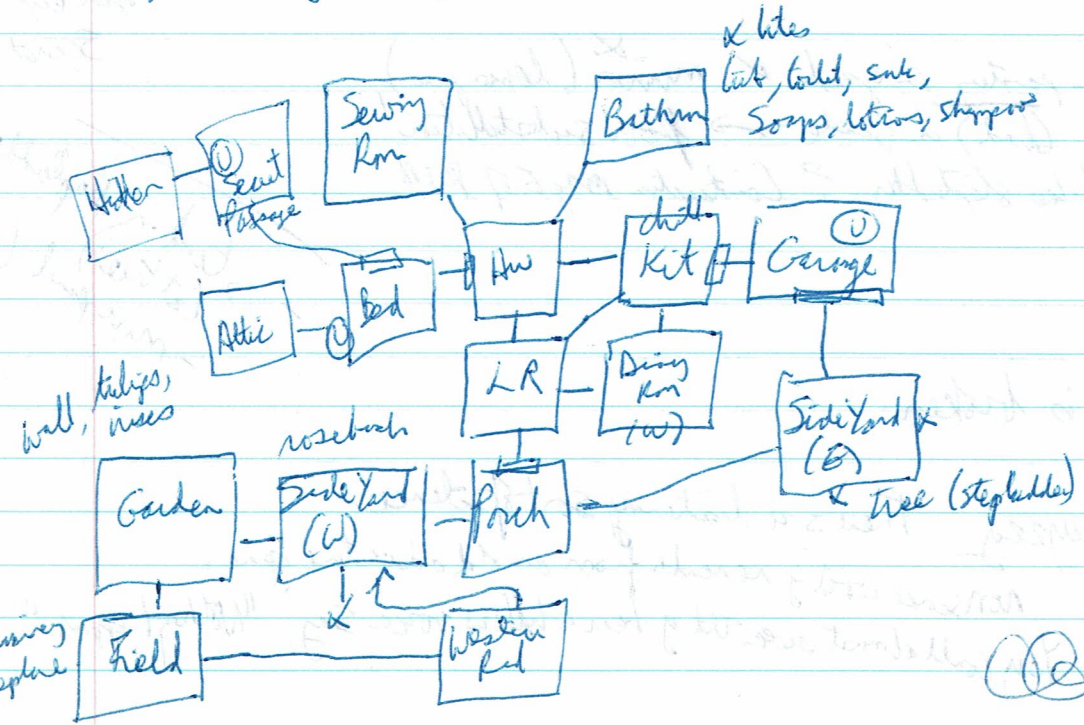
[Kit] - pot, skillet, 2 plates, 3 cups, silverware, fridge, stove, sink. Garage E  
 open cabinets. (can of paint remover & tongs amongst food) tongs are heavy.

[Garage] door open, rope, staircase, boxes. (u to 'Albert's apt.' - under construction)  
 in boxes (artist's brush) - seen only when door open?

[bath] mirror (unsteady) [Bath] x tiles (take tile 1 1/2 x 1 1/2 spec)

@ LR: clean painting with brush. (young woman in bonnet & lavender dress.

Some thick part. Written letters at bottom (+5) need letters "Hanged as a  
 witch, 1701"  
 x dotted. (left side of face) remove dotted E remover (+5)  
 girl looks just like you, incl yr blemish.



Handwritten signature or initials.

Hilroy

[Living] chair, table, machine, cabinet of throat & dirt, project (dress)  
needle threader Sew dress with machine

[Bedroom] (door was cracked)

chandelier, bed, dresser, desk

x grey case (see square online) x outline - its a trap door, i chandelier as door knob

x bed - huge headboard, no footboard, headboard.

look under bed (walker) fake walker unfold it. drop it.

x desk (simple roll-top) open desk (cubbyholes, guide)

read guide (look up topics) x headboard - see door in it.

x secret door (look under flap of desk) x lock

unlock secret door with threader ✓

n. [Secret Passage] (+S) x ceiling panel (arrow + stake found)

move panel (i slephtaker?)

[Hidden km] (+S) letters, doll. read letters

SPACE  
BEE  
BED  
FADED

(light down)

play free on piano. play beg on piano (SAFE)

play bed on piano. play faded on piano. (+S) => [Left]

lock, Aunt in dress + seatbelt. ladder d. → WIN (30 of 40)

i {end}

tie rope to chandelier. pull rope. (trapdoor opens)

u. [Attic] (+S) window, trunk, dust. open trunk. x loop. (was supposed to give key in Secret Passage)

look up party in guide & mirror (lemon juice)

look up (dash) in guide → poor substitution!

- cant take slephtaker? Construction: msg 5 of Part 4

Stand in Slephtaker (attic) move panel (carton walk)

get X is broken

dyzzy There's a history sort of science.

nonsense word y reminds from an old adventure game.

You could almost swear that y hear a hollow voice say, "Nothing happens."

look up letter in guide