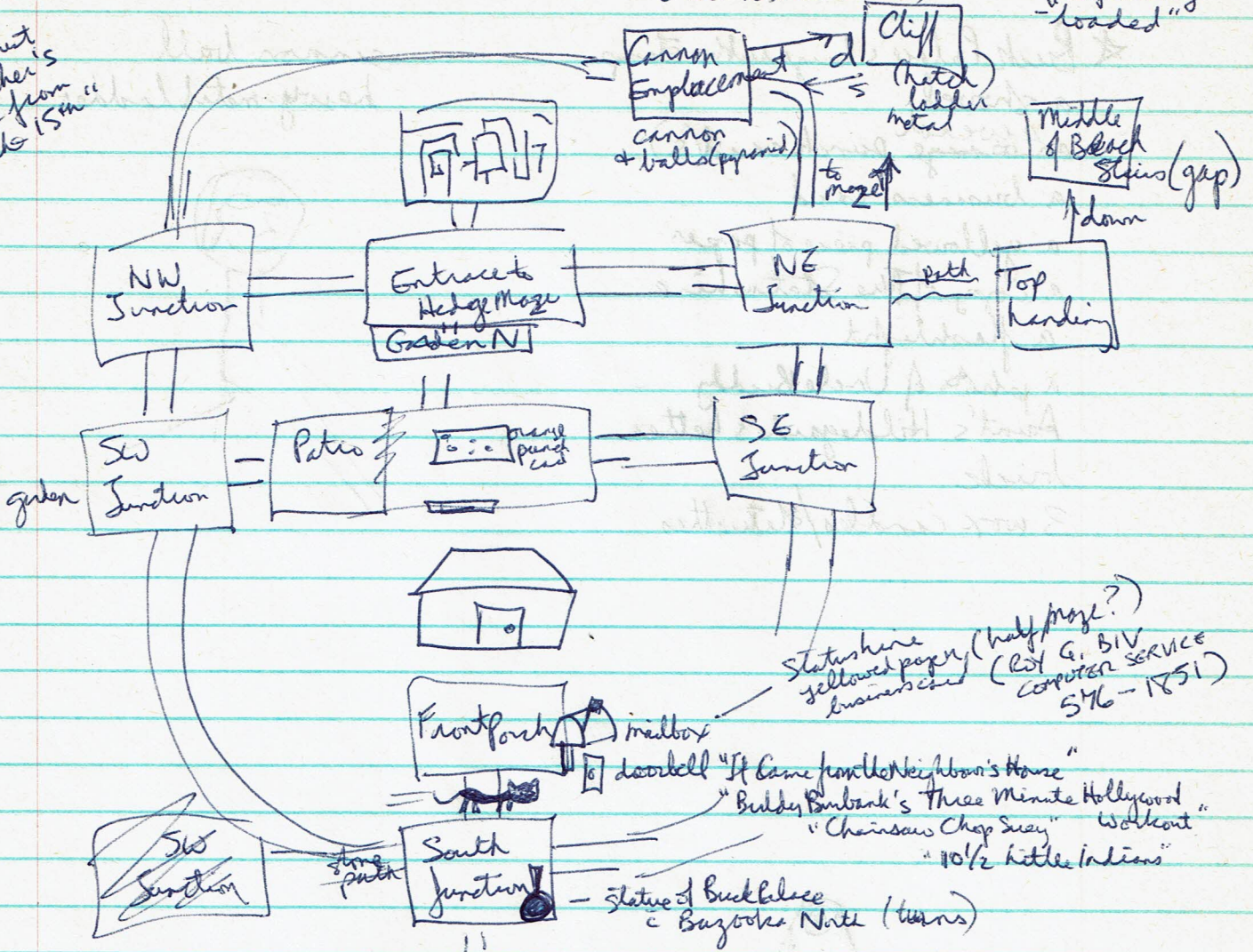


Hollywood Hijinx

Start: South Junction
 - Photo, letter, flashlight
 (Meet lawyer at 9 am in living room
 - all 10 treasures)

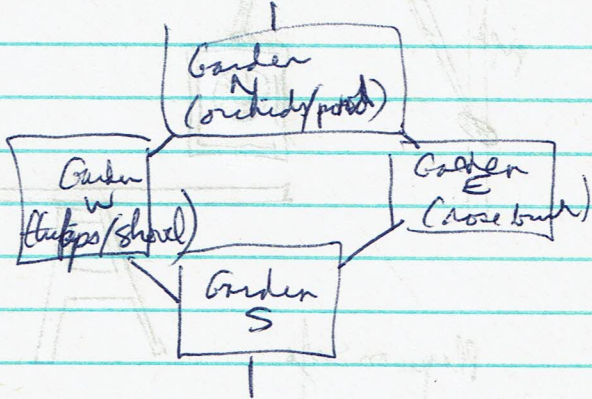
- fuse in cannon
- wheel on compartment
- was in "Disciple meets the Confederacy"
- "loaded"

Compartment has catcher's mitt from "Friday the 13th"



Statue of Buck

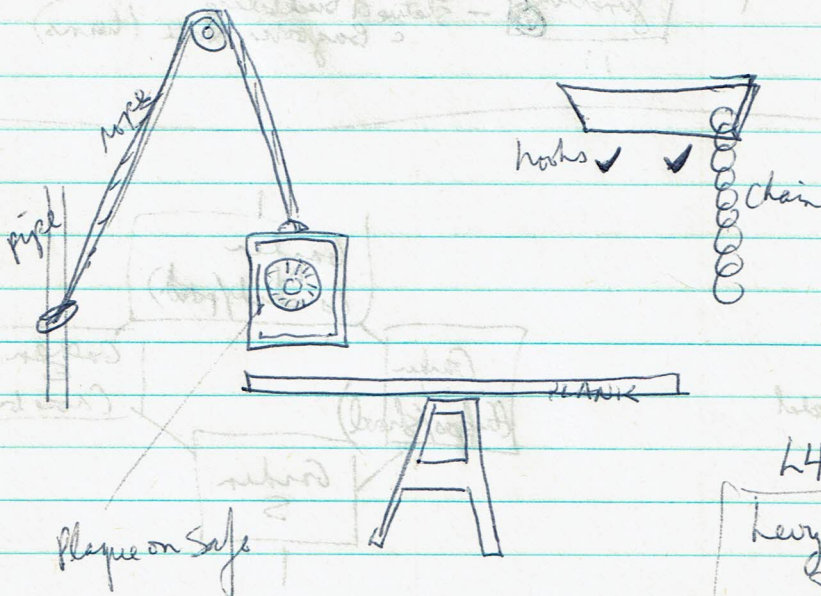
- 2 URLs
- Bazooka
- belts of ammo grenades
- rifle
- boots
- bazooka
- mailbox
- compass rose/pedestal



Board?

- ★ Buck Palace's large rubber stamp
- a shovel
- several orange punch card(s)
- a business card
- a yellowed piece of paper
- a copy of The Stateshire
- a flashlight
- a photo of Uncle Buddy
- Aunt's Hildegarde's letter
- brick
- 3 wax candles/statuettes

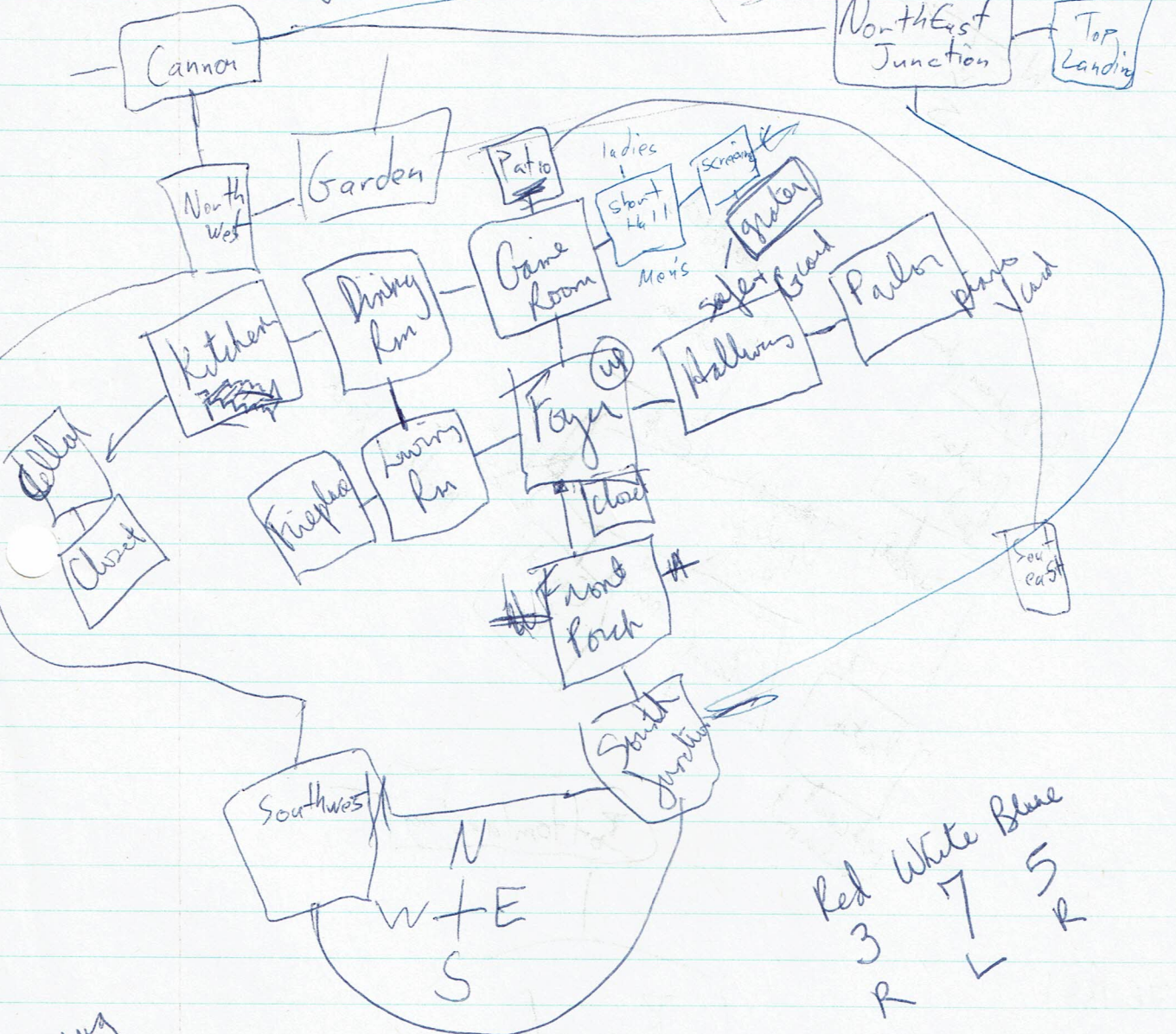
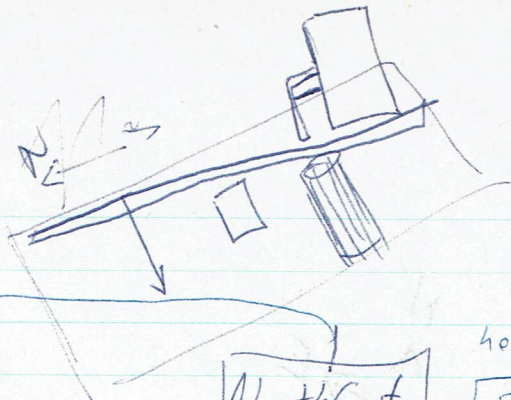
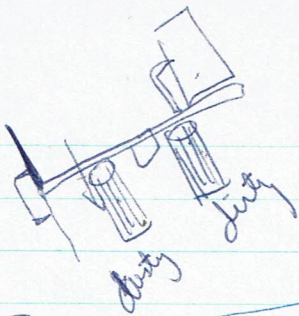
cannon ball
heavy-metal ladder



Plaque on Safe

L4-R5-L7
 heavy, Regon, Hebling
 Safe Company
 Upper Sandusky, Ohio
 1936

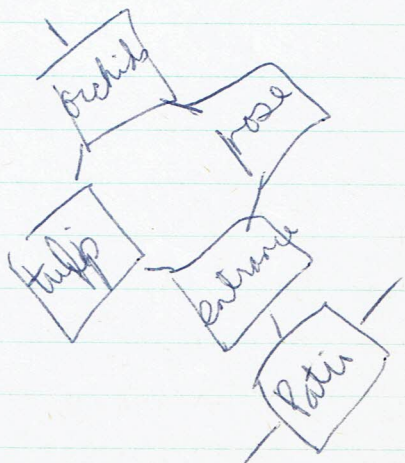
~~to be~~ Film
 "A Corpse here"
 in Safe.

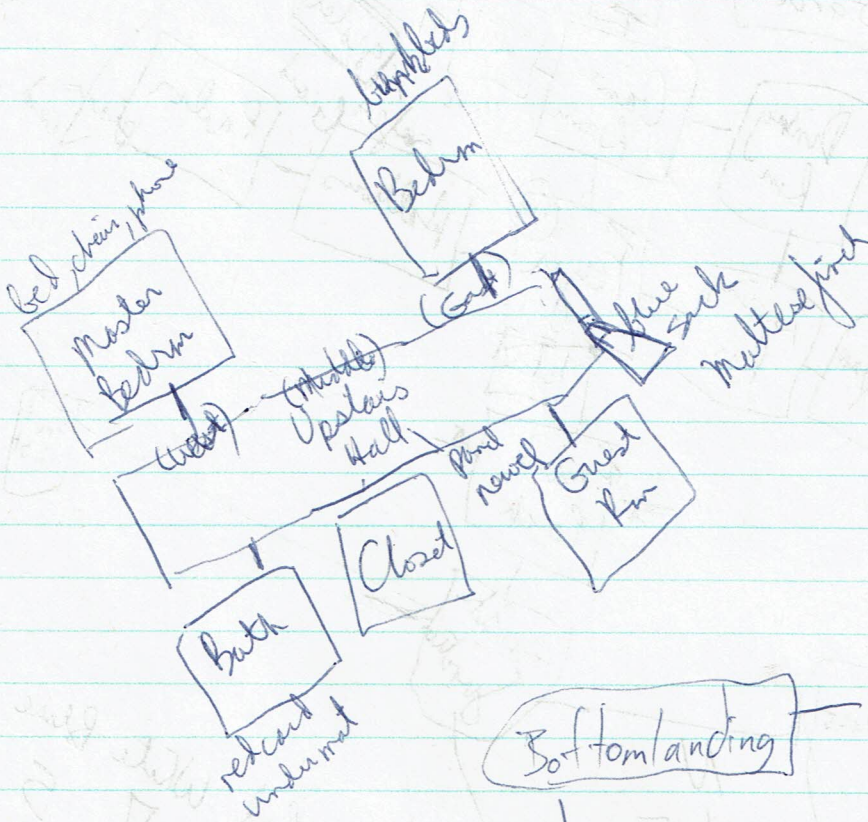
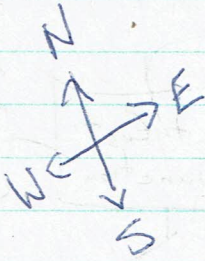


rug fireplace telephone

camelot on piano.

Red 3 R
White 7 L
Blue 5 R





S76 1851

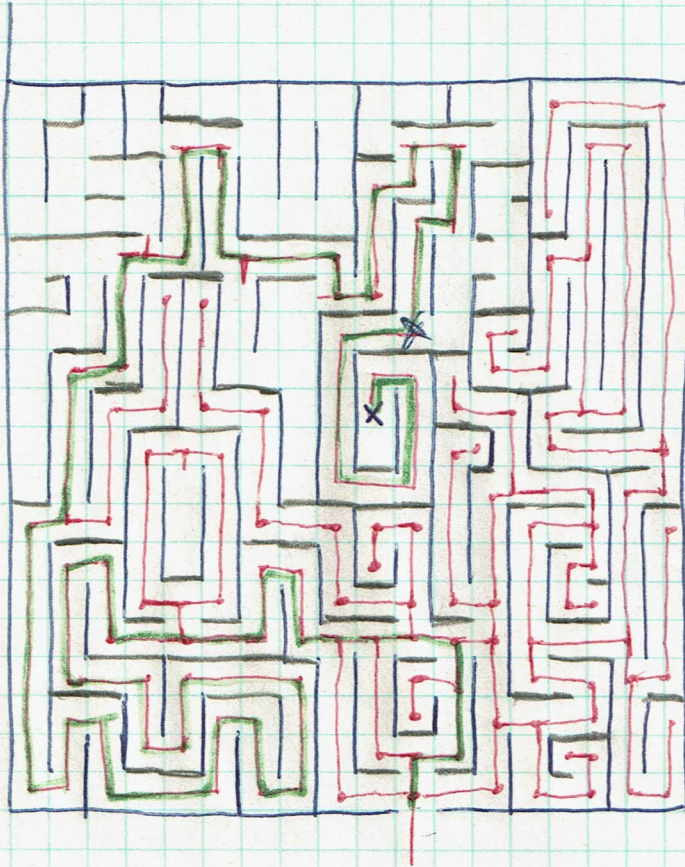
Beach

Treasures

- stamp (in maze)
- ring (in Game Room)
- quater (in safe)
- meter (small passage)
- mask (under copper)

~~Mon~~
Feed Hall
Video Party
7:30

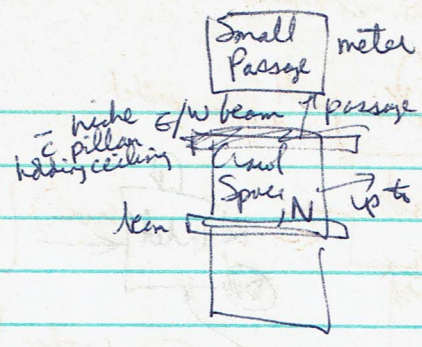
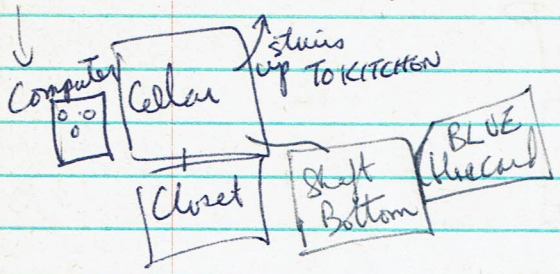
10/150



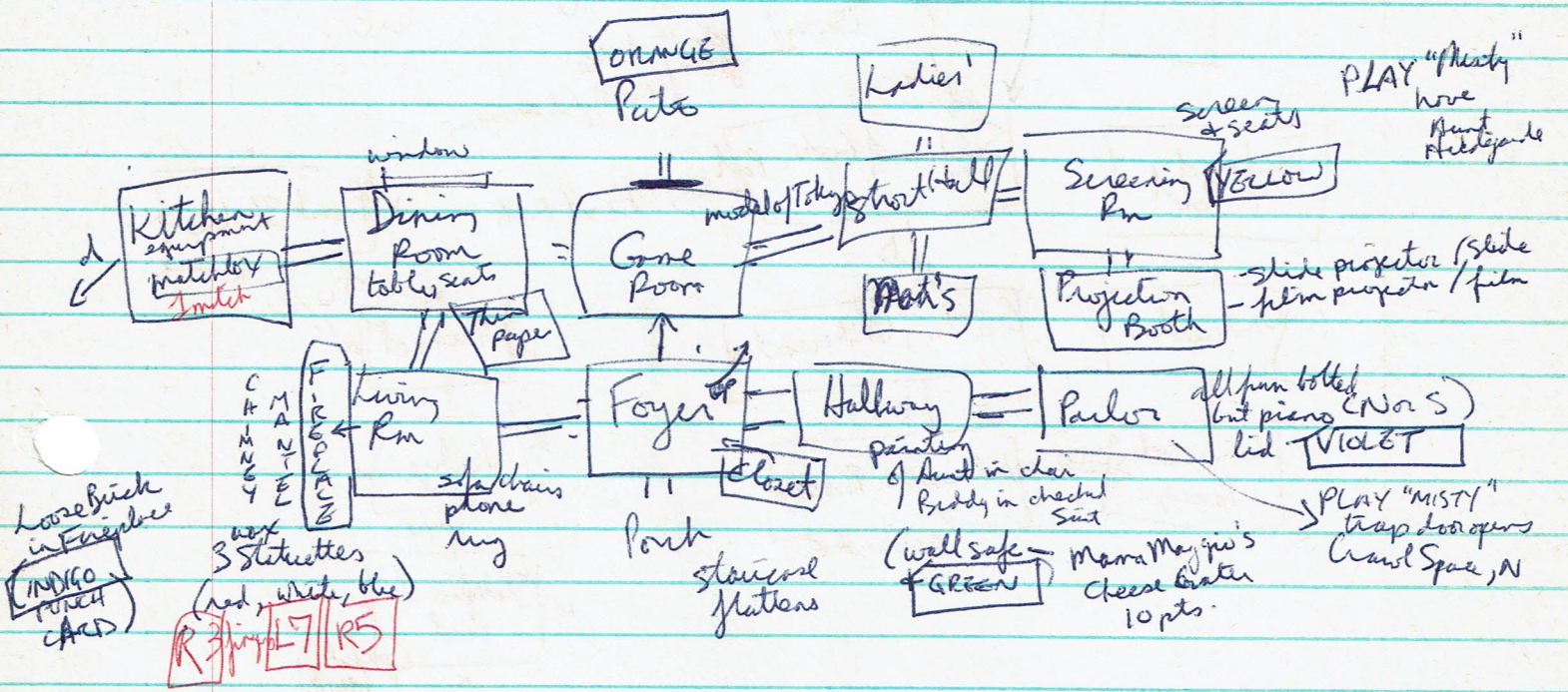
DIG #N Ground
(with shovel)
- uncovers Burke Palace's
large rubber stamp 10ft
in "Address Unknown"

PLAY "Tonight"

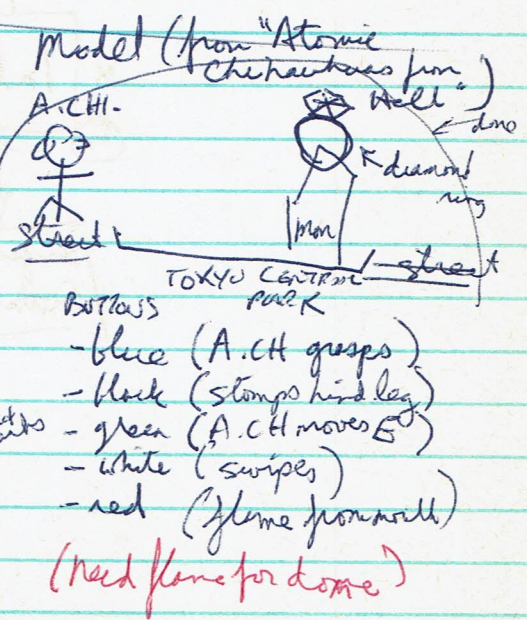
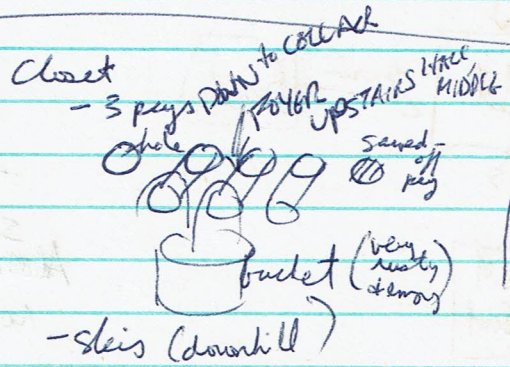
Plan Nine From Marketing
 - lights
 - shut button "EB567"
 - hopper



push PIANO N
 D, S, TAKE PILEAR
 U, push PIANO S, G,
 D, N, TAKE METER
 Max Chaplin in "You Can't Fight City Hall
 But You Can Blow It Up!"



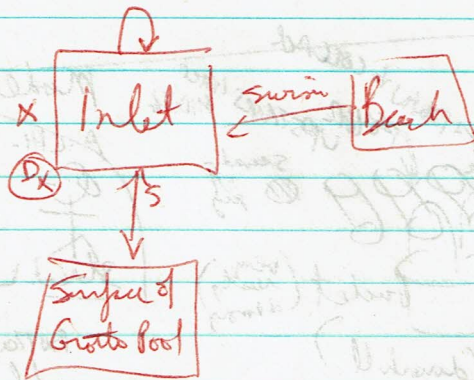
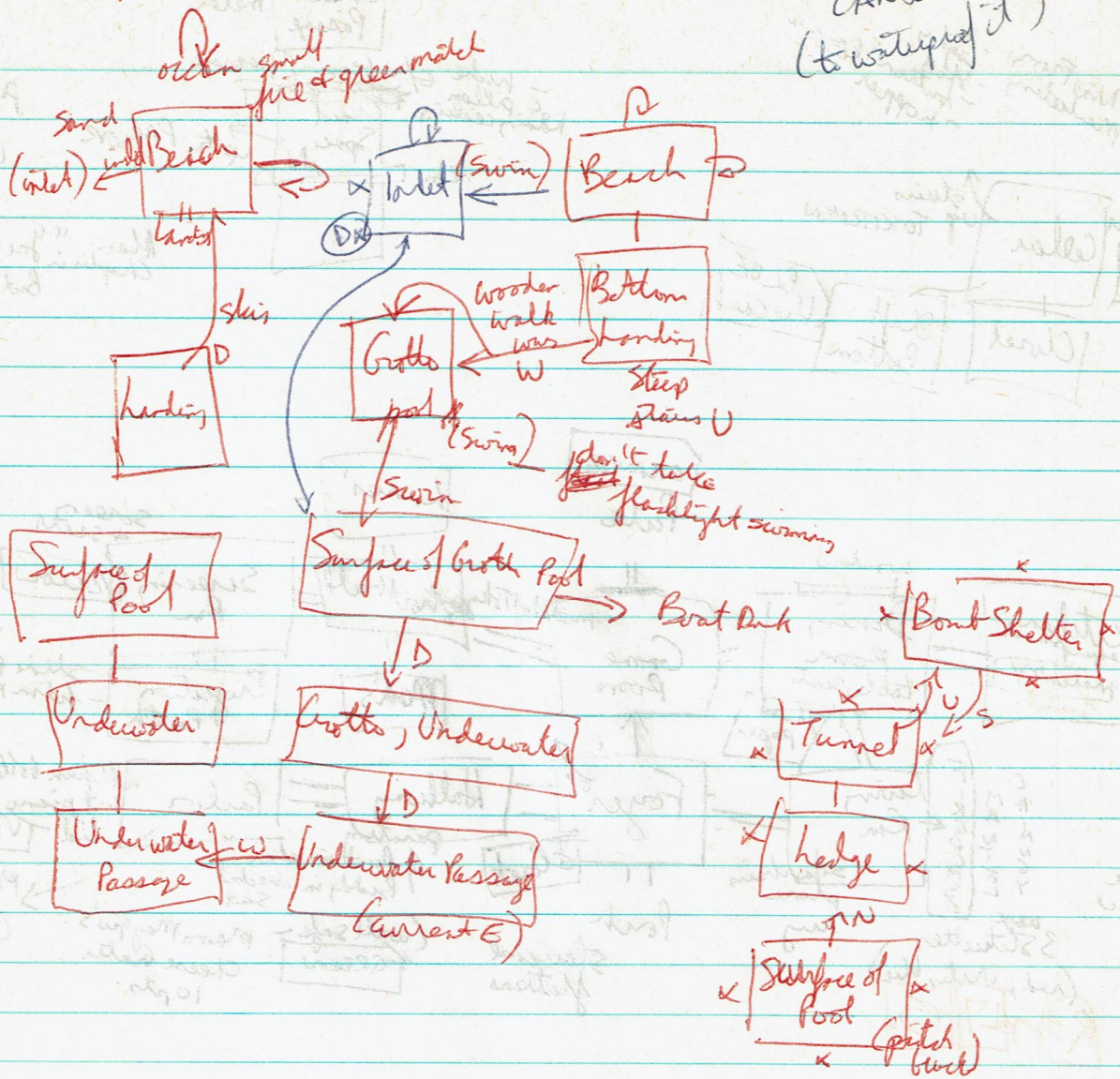
chimney
 Foyer - paneling
 - coat closet
 Thin Paper has long lines of maze.



(Polt 2nd pg
 - door shuts, vibrates, slo) placed

Hawaii - 2000 miles

DRIP WAX ON
CANDLE
(to waterproof it)



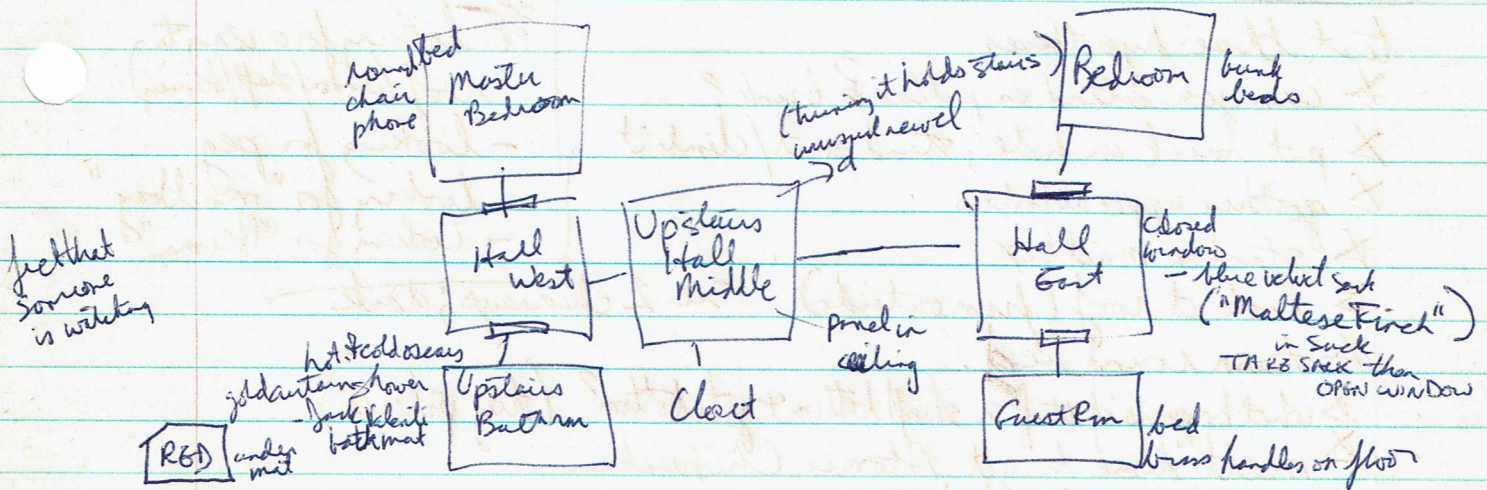
Boat Shelter
 concrete walls & floor
 sawhorse & plank across it
 At left end of plank is safety rope

- need to find Blue Punch Card
- can one go UP chimney?
- search out Kitchen, Dining Rm, living Rm, Ladies' & Men's Rms more thoroughly
- try to enter Closet in basement when you left it at 1st or 2nd floors.
 - " " 2nd floor " " " " " ~~Base~~ or 1st "
 - 1st floor " " " " " B or 2nd "
- can you TAKE POC
- try filling bucket w water & putting it back on peg.
- try to operate computer (i.e. a i out cards)
- how to get ladder up slope?
- how to bring light underwater?
- how to open panel in ceiling?
- search Upstairs a lot more (one RED card + Matheson Finch, that's it?)
- look out windows of Hall East, Dining Rm

rubber bath mat

Treasures

- 1 ① Buck Palace's stamp 10 pts - film + slide?
- 2 ② Big Diamond Ring 10 - ~~op~~ exciting heist!
- 3 ③ Mama Maggio's cheese grater
- 5 ④ mark from "Friday the 13th"
- 3 ⑤ parking meter
- 4 ⑥ toupee 576-3190
- ✓ ⑦ "Maltese Finch"
- 5 ⑧ "A Corpse Line" film
- 6 ⑨ hydrant in attic's trunk (110 pts)
- ⑩ stuffed penguin in 2nd chimney [climb 1st chimney + walk across]



newel is wooden part of
rival Roger Gorman

find something to fit in hole (in closet)

rejected: dusty pillar

flashlight

shovel

brick

ring

letter

photo

candle

test these hypotheses

✗ can you stand on pillar & brick?

✗ put brick in hole; stand on it/climb it

✗ go thru upper window

✗ stand on mailbox

✗ look at roof (from outside)

see 2 chimneys; dark

✗ turn round bed.

✗ what happens if stuff in shaft bottom & go to bottom? (try pillar)

✗ melt dome to get Atomic Chipmunk.

✗ take/move model of Tokyo

✗ can you stack pillars?

the looking for a way to
roof (window/shaft/chimney)

- looking for peg

- looking for "mailbox"

- looking for "Heimer"

(turn Buck W, E, N)
to open door

(get on)
"find board" "find matches" "find candle"

- try slipping something under front/~~porch~~ door (eg. ^{paper} card)
- ~~try to pry open hatch with shovel~~
- ~~put shovel across gap (falls)~~
- ~~look at rest of stairs (can't)~~
- map out rest of maze
- ~~smell (esp. garden, statue)~~
- ~~fold ladder / look in it / open it / throw it off cliff / ram hatch with it / break it (THROW LADDER AT CLIFF => you missed)~~
- ~~shake ball / break it / roll it down cliff or stairs~~
- ~~run down stairs~~
- ~~tie "line" to stairs~~
- ~~take free (?) - it's stuck~~
- ~~perhaps posn of Buck operates porch door or hatch~~
- ~~dig in cliff~~

Hatch			Porch		
WN	(N)	NE	WN	N	NE
W		E	W		E
SW	S	SE	SW	S	SE

put ladder ~~against~~ cliff
 beside on (no good) ^{shovel}
 in cliff (can't possibly)
 in hatch (hatch is closed)
 standing ladder
 put up ladder

STICK
 TRBB
 MAIL BAG
 HERMAN

For fast service, call
 Roy G. BIV
 COMPUTER SERVICE & REPAIR
 576-1851

Computer lights spell "576-3190"
 I can't come to the phone right now.
 Aunt H: "I'm dead. Don't forget to look in the hopper."

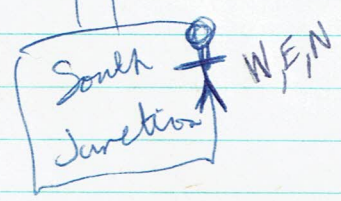
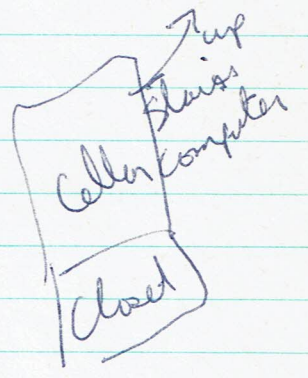
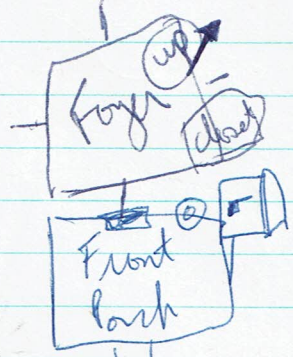
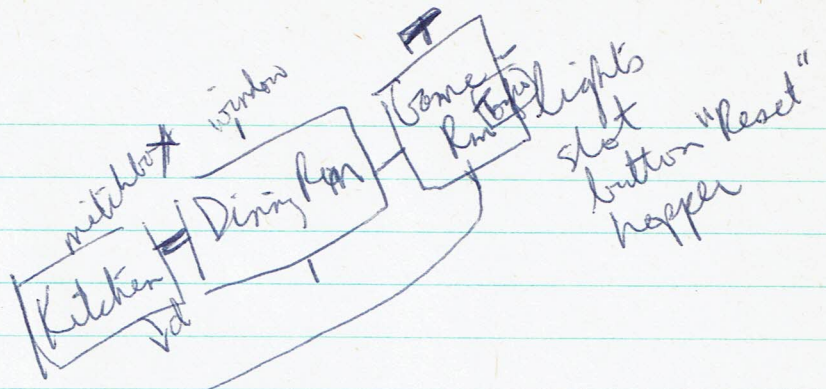
(Hopper also has Uncle Buddy's toupee)

cobwebs/rafter
 dusty trunk (fire hydrant from "Atomic
 Chytrachues from Hell")
 folding ladder
 attached to panel (open panel
 then open trunk)
 Attic

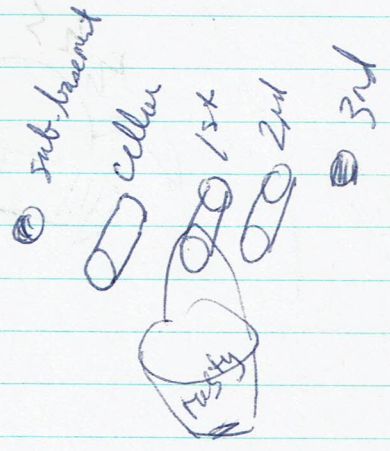
(put bucket of water
 on the peg)

211-1851
 COMPLETE 2010 & 2011
 RIV 2 VAD
 211-1851

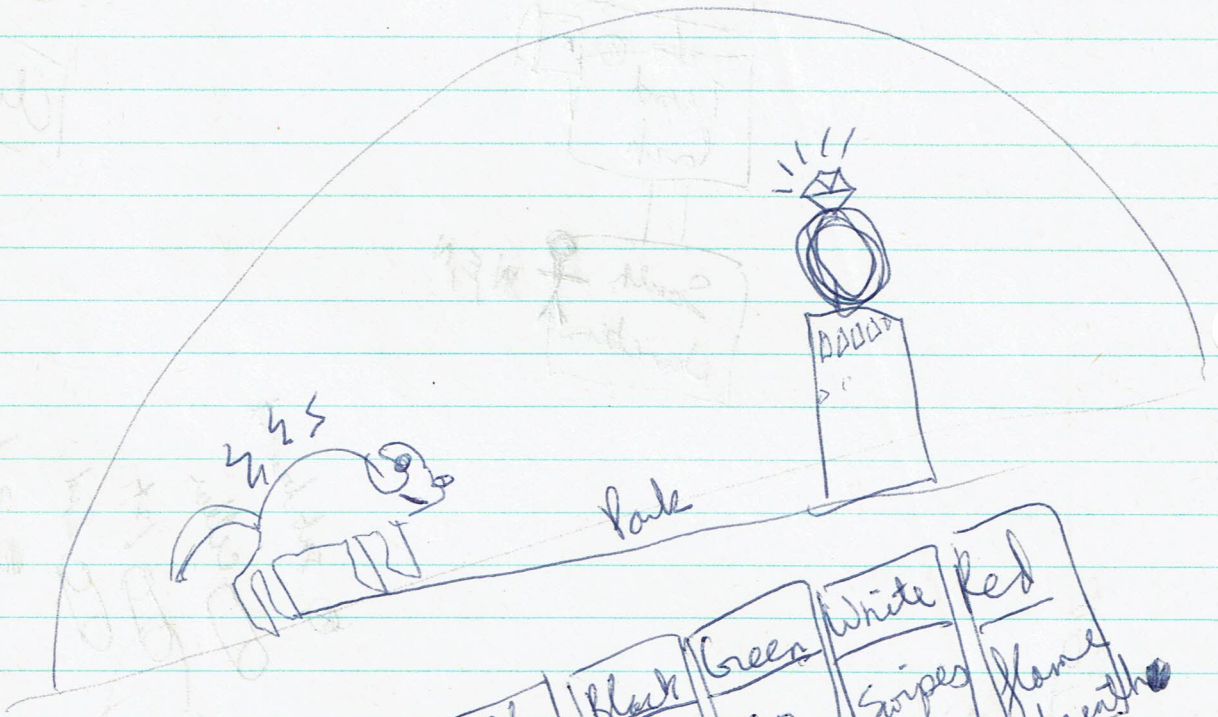
211-1851
 I will be back in the office
 (hope she can make it)



FOR
G
B
H
V



↑ stairs



Blue	Black	Green	White	Red
front claws	stomps hind feet	go forward	stripes	flame breath
grasp				