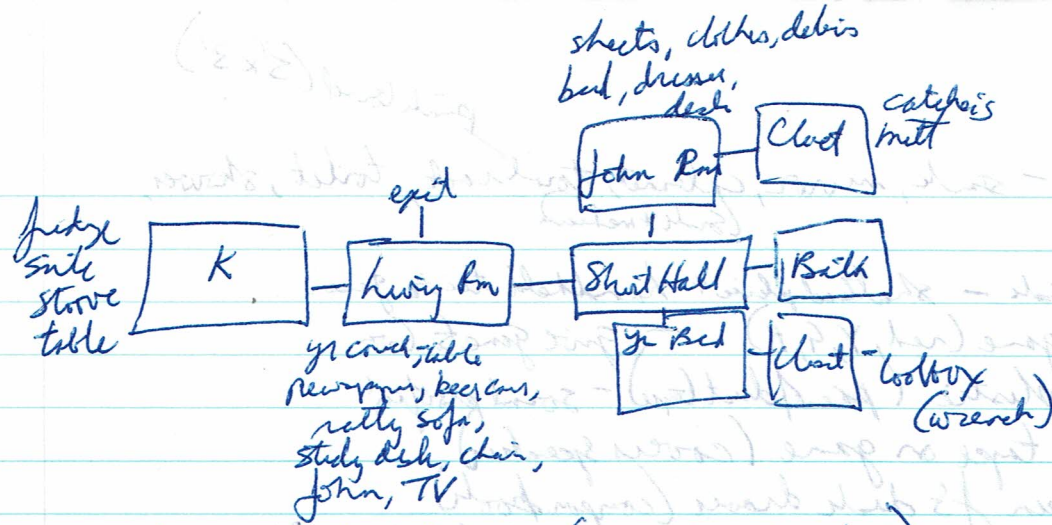


KISSING THE BUDDHA'S FEET  
 kissing.gam  
 Version 2.1  
 (c) 1996, 2000  
 by Leonhein



- need remote to turn off TV. (crumpled paper, radio)
- door slams (close window?)
- Alice, Bob, Carl, Evan arrive.
- close window in J's bedroom (hole in window (baseball sized) w/ watchband)

judge { beer can, raw cookie dough }  
 put dough in hole (in J's bedroom) x dough (baseball sized)  
 Yr Bedroom (bed, desk, dresser, mirror, swivel chair, closet)  
 push chair north.

on K table: box of chocolates = square dk, □ lt, round dk, round lt,  
 shell-shaped dk, shell-shaped lt, Δ's dk, Δ's lt, ○'s dk, ○'s lt,  
 torn card  
 x torn card (caramel, coconut, marzipan, peanuts, almonds, pecans, cherry,  
 liquor, marshmallow, fudge, mint)  
 x sink (dishes, skateboard, cabinet)  
 x beer can (milk!)

over mitt. search yink (in L.R) ⇒ remote!  
 turn off tv. (with remote)

ask Evan abt dee's chocolates

○ dk = almond	□ lt = pecan
Δ lt = peanut	Δ dk = marshm
shell lt = fudge	shell dk = cherry liq
○ lt = cherry liq	○ dk = mint
□ lt = marzipan	□ dk = caramel

show blue wrapper to Evan  
 shell lt { liquor  
 square dk }  
 (give a liquor shot  
 to Bob (he passes out))  
 put Bob in swivel chair  
 push chair to yr closet,  
 close door (shoes  
 are kept quiet)

FLAWED

Hilroy

pinkboard (5'x3')

Bath - sink, mirror, cabinet, towel rack, toilet, shower,  
(sink + tub)

X J's desk - shattered plastic handheld twin game.

X game (red, Y, G, B) - give game to G

X plastic (piece of duct tape) - sound proofing!

put tape on game (covers speaker)

open J's desk drawer (comp books)

- Seafood comp, Nicksharten, Chez Merde -  
(fortunes)

X chez merde (suffle plate) ✓

but Alice is cold (give towel) ✓

a way to leave? (give skateboard to Alice)

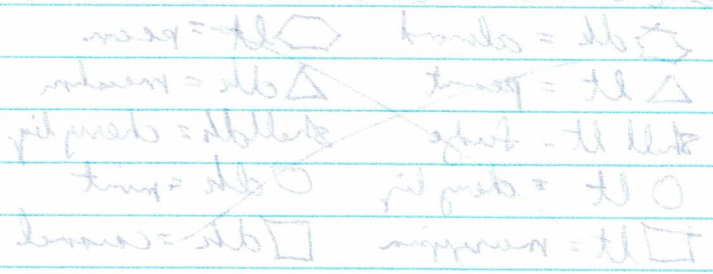
(hear dripping noise from kitchen) fix pipes with wrench.

(hear drips from bath) fix sink pipes with wrench.

(overhead pipes are out of reach)

stand on sword chair. fix overhead pipes with wrench.

Handwritten notes on the left side of the page, including phrases like "Alice is cold", "a way to leave?", and "fix pipes with wrench".



next light  
- link