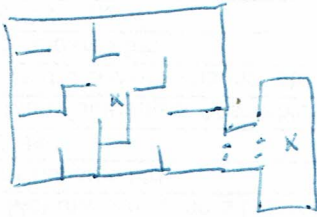
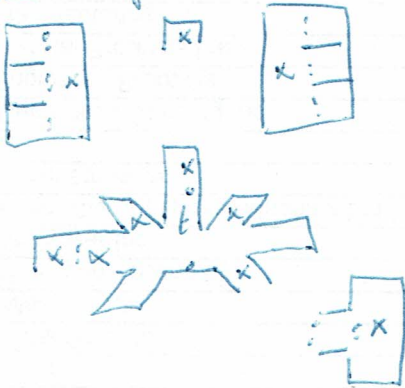


dungeon map



castle map



MACOCRAZY
- jar

Keydon of
ntro: Parris ~~at~~
- within can acquire food, water, safety, light,
summar + surg.

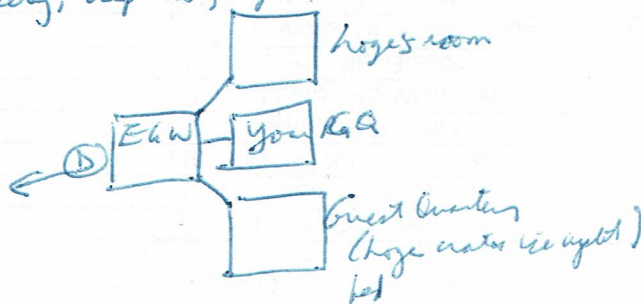
- King Ardasher I dying
6 magic in castle (including y + King)
- Bathazar (white, seer)
 - General Hoge (war mage, sword of flame)
 - Lelith, Queen of Partha (erchantmats can enslave)
 - Rhianon (daughter of Anputer + Ethrea (Wachif of Nute) (Dussider))
- she is greatest conjurer + skilled in quarterstaff
 - Uzume (joke summoner from east, teleports)
 - we will all stay until one is victorious.
Ardasher vanishes, then y transported to your bedroom

[Your Great Quarters] bed, eatable, my, east W, chalice + your spellbooks [help]
* spellbook: read it. Sorecery spells: SHIRAK (lyft), DULAK (lyft of).

- Summoning: SUMMON FIREFLIES
Conjurers: CONJURE MUSHROOM / WATER / STAFF (in chalice); heals you.
Surgj: HEALTH (diagnose)
Erchantmats: SEDATE x (x falls asleep)
MEGA (increase carrying strength)
UNMEGA (decrease carrying strength)

Lealth: HP 15/15, AC 10, Attack level 1
Carry 7 more cubic feet + 45 more pounds.

W [East Great Wing] carpeting, haphis, light out, great rooms to east
* trophies (unicorn, basilisk, mantis)



Loze - water, ice, fire, electricity
ask Loze abt his (Balthazar he planned the contest) ~~4~~
abt Balthazar (you cant defeat us both, stay out of our way)

- wear full plate armor & electrically charged.
abt armor. If you wear the old suit, you'll be only slightly less equal should I decide to end you in a pommel by force.

[Loze's Great Chamber] feather bed, large chest, straw dummy.

d → [Eastern Stairwell] great hall SW SW → [Great Hall] paintings, weapons, armor, carpet, runes,
doors E, W, SE, stairs NW, NE, SW, front gate S, large brass doors N. [22 min]