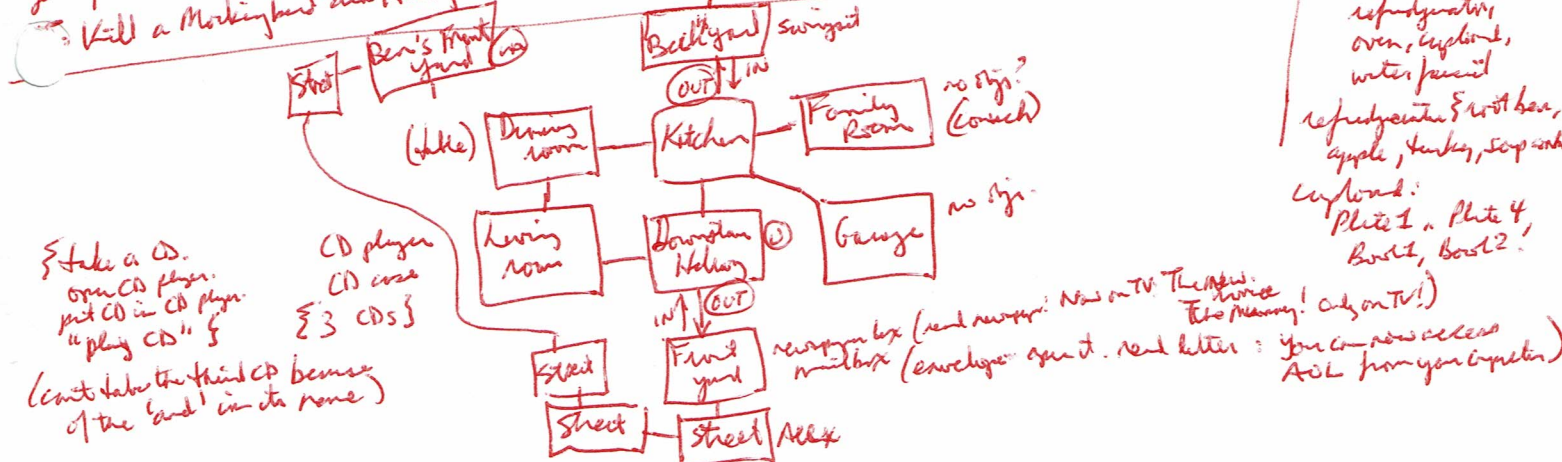


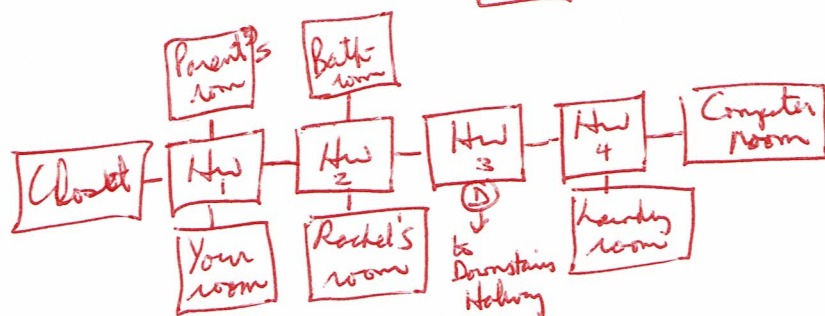
[Your room] l. {dresser, TV, bed, N} ; {-}
 x dresser. open it {shirt, pants, socks, underwear}
 x tv. turn on tv. watch tv {can watch channel 2, 6, 25, 44, 45 or 46,
 z "change channel to (number)" } channel 2: news, boing
 6: Simpsons; 25: weather; 44: Spongebob on Nickelodeon; 45: Disney; 46: Cartoon Network

Matt's House
 by Matt Maricini
 Ad 4, 2001
 last updated
 29 May 2002

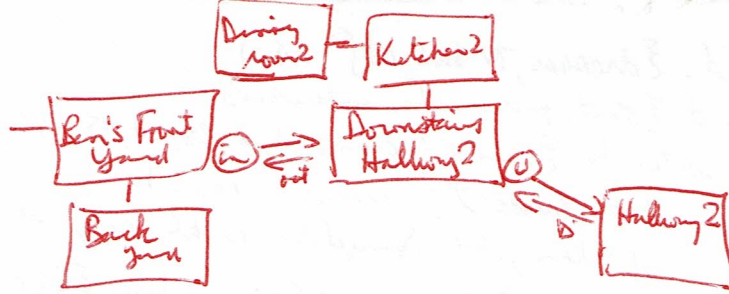
N {studying up front} → [Hallway] Doyer, N, E, S, W. x Doyer {yr cut} pet doyer
 W → [Closet] shelf z food. take food. ven food.
 e from Hw → [Hallway (2)] N, E, S, W. S → [Rachel's room] bed, Rachel, N {anything to do?}
 e from Hw (2) → [Hallway (3)] E, W, D e → [Hallway (4)] E, S, W.
 S → [Laundry room] washer, dryer, N {both closed + empty + openable}
 e from Hw (4) → [Computer room] computer, treadmill, N64, game case, Cell phone, W
 open game case {have to use full name: Tony Hawk Pro Skater, The Legend of Zelda} ^{Occurrence of Time} Super Smash Bros.,
 Mario Party 2, Pokemon Stadium, Mario 64 } take a cell phone. take mario 64. put it in N64. play N64.
 {games have to be typed in full } {the treadmill can't be turned on; broken how to refer to the computer}
 {turn on computer + turn off computer work, but not 'x computer' } // [Bathroom] toilet, shower stall. open toilet
 sit on toilet. use toilet. flush toilet. wash hands. take a shower. {can't interact with the stall } x sink
 get off toilet. // [Parent's room] bed, bookcase, Mom, Dad, S. {two beds in closed? broken:
 Kill a Mermaid and Harry Potter. Can take, open, it read them } {the bed is mislabeled as 'your bed' }



Kitchen -
 refrigerator,
 oven, cupboard,
 water faucet
 refrigerator & hot bar,
 apple, turkey, soap sink
 Cupboard:
 Plate 1, Plate 4,
 Bowl 1, Bowl 2



log on doad ✓ {you have mail}
 read mail {have you played Tony Hawk Pro Skater lately? My high scores 76, 391 pt (from Hw)}
 {from Hw}



Appendix A

This section contains a listing of all fonts, bar codes, and their respective character sets supported by the Privilege Card Printer programming language.