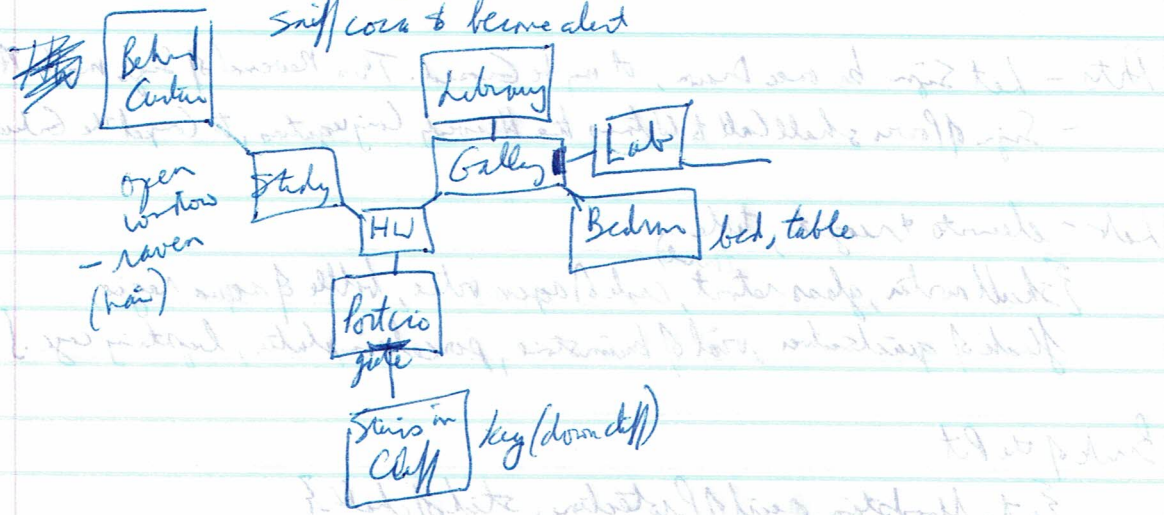


Study (on couch) - shadows, curtains, desk, window, hearth, bust of Pallas (SE)  
 i { gold mine } "heroine" kneeling  
 desk { satchel, lamp, Concerning Immortality (book)  
 ↑ coca powder  
 ↳ eat Pigeon of life



Gallery - portrait of heroine  
 Library - manuscripts (Ex Sanguine Vita, Adams' Pharmacopoeia, Inhumanities, Principia Caelestium Mysteriorum, Arts of the Chaldean Magi)  
 Vita (for blood), Adams (read in study)  
 Vita (life is in the Blood)  
 Adams (experiments excessive use of coca)  
 Inhumanities (Grief of the King) - read Hereward's  
 Mysteriorum (sin is King, his metal is gold)  
 Arts (place they sought on Sep, in accordance of laws of Hereward, + influence of Hereward)  
 bed (garage floor on posts, sheets)  
 table (eyebath, hunting knife) catch tears in eyebath

open bust / hair → peyote button, opium pipe, opium resin  
 (visionary state)



(22) vision of study → gap between window & floor

cut curtains with knife? No

burn curtains? die

enters in fireplace

Acts - Let Sign be once Drawn, it may be Cursed. This Reversal of Signs may be Accompl.

- Sign of Power shall Call to Witness the Heavenly Conjugations, to Compel the Evilward

Let - elements & reagents, table

{shell mortar, glass retort, <sup>(bowl)</sup> card of aqua vitae, bottle of aqua regis, flask of quicksilver, vial of krumstine, porcelain plate, lightning cage.}

Bank of the Pit

{pit, bloodstain, sigil of Protection, stick of chalk}

cut bloodstain → fragment of dried blood.

### Mysticism

- ~~lead~~
- gold
- regis
- pit
- quicksilver
- raven
- aqua vitae
- silver key
- lightning
- retort
- skull

- cheap bellows metal represents World, its pressing gloom
- Sun is great King, his is Royal Metal that does not corrupt
- Water of King (~~lead~~), <sup>deity</sup> ~~was~~ <sup>is</sup> ~~of~~ <sup>the</sup> ~~highest~~ <sup>highest</sup> ~~to~~ <sup>to</sup> ~~compassion~~ <sup>compassion</sup>
- Pit; land of graves. Fire & wrath & stretch are his
- Messenger; glides between Gods & birds then, as his earthly substance <sup>more softness</sup> <sup>of</sup> <sup>imitate</sup> <sup>the</sup> <sup>moon</sup>
- Raven, bird of ill omen. Bodes woe, but brings wisdom
- Water of Life, most intoxicating of drink. This is joy in its fullness
- Moon is the Queen; Her metal shines with pale light & accompany King
- Fire of Heaven, can't be captured or subdued, this is Fate (Compare Franklin)
- In the Glasses, image of Temple above, do Powers of Heaven conjugate & all Influences.
- The Skull is the base of all the Heavens Desires & Influences

... with ...

## Arts

- Sign of Desire shall Bear as Witness the Heart's Influence, for Guidance of Entreated
- Concerning Signs: Must Obey Law as Instructed!
- Sign of Power - call to witness the Heavenly Configurations, to Compel Entreated
- Sign of Protection - bind Entreated, to Star Bonds as mine, not Die, but Sleep a season
- Sign of Wrath - shall Lead the E, in Destroying Rise vs Foe. Best Woe to him who calls
- For the Sign once Drawn in the Place of the Art doth Call the E.  
Who shall Most Fearfully appear, neither Banned nor revoked without Art.
- Let a Sign be once Drawn, it may be a Second time Erased.  
Thus the Reversal of Signs may be Accomplished.

## Vts

- Life is in the Blood
- Tears, signify bending + dedication of one or other Elements
- Ashes of Beloved, that is of drawn or given away, use of worth for Reclaiming Worth
- Ashes of Peace, that is, of living, used for consecrating place of Harmony.
- ★ - Blood of the Sacrifice - means of return  
It is Substance of Absence, Substance of Presence, Water of Heart, Beloved Ash  
all upon Desire
- Blood of the living, that is = Substance of Presence, is useful in cloning Desire.
- Elements of the Earth, that is, of the life, are not to be mixed with those of Heaven;  
they are to remain Apart, in a vessel called a chalice for themselves.
- Blood of the Dead, = Substance of Absence, has small powers. See that it is of New Kim.



## Inhumanities

- Wrath of King: King brought to his Temple with Queen, but no Messenger with them.  
In audience with Lord of Pit, called down Heavenly Fire before them.  
And the House (the true one) did shake, war + made rage.

Grief of King: In his Temple without Queen.

Messenger brought to him + bearing news of Heavenly Fire.  
Water afflicts King, until Soul melted.

This is King's Grief, how his Power was touched  $\bar{c}$  Compassion

Death of Messenger: Bright messenger travel to Temple in search of healing Water,  
no King nor Queen. Weights of World pressed him,  
after 3 days + nights he fell into the Pit.

## Pharm

- opium is hypnotic + sedative; sleep + dreams + sleepwalking
- hashish + ~~smoke~~ smoke for relaxation + suggestibility
- peyote - eat for vision (no sleep!)
- coca - refreshment of fatigue (don't overuse)
- cola - (Coca-cola joke)

Skull matter "embracements of life"

report "mineral elements"

platter "for waste when vessel emptied"

cut pattern  $\rightarrow$  triangle of head heart

skull	glass
triangle/iron	ring
tears	quicksilver
fragment	
my blood	

HF6. Love. Love

Open window. enter gap. x shadows (block)  
push block → grinding noise!? (passage side fireplace)

enter fireplace → Hidden Chimney

On the Tower (chimney, rod - gap in copper cable  
put knife in gap

---

Countyd - Levee, apple tree, fruit, raven  
if Levee eats apple → Resurrection  
if you eat apple → Immortality