

(2 word or 4 word counts)

you are Grogan Martin McSorheim on SFS Convey

Chptr 1: The Incident

[Your apartment] (bed, dressers, tv, door W, comb and dresser, mailbox)

x comb. x bed take comb. x mailbox. open it. x envelope (from Bureau)  
take it. open it (letter) x letter (go to Teleport Ctr & luggage & show letter to attendant)  
x tv (Richards) W.

[Hallway in apartment block] (dishes can, you apt E, exit door N, how other dir)

x can. take can N.

[Misty Street] (litter, sun, how road not, power W, apt S)

W. [Saffle Street] (down into, W to Ctr, Herald) x centre (see capsule to N)

x herald. take it. W. [Teleportation Centre] (capsule to N, desks, official)

x capsule. x desk/official. show letter to official. (enter booth & press reads btn)

N. [Interior of teleportation booth] (window S, panel & one btn) x button

x window. push button. [Teleport room] (podium 25 circles, panel, door N, porthole E, Cpt Jacob Matthews) x podium x panel (off). x porthole.

x captain. ask captain about me (or other, but not Z.)

(Shift isn't for 6 hrs, so go to Q's, gives you keycard) x keycard. (E.)

N. [Corridor on the Convey] door, panel, pipes

x door. x panel (off & slot) put card in slot.

[Your quarters] (honey, Slaying, Bathroom)

(bed, sheets, table, chair)

x bed/sheets. x table/chair

(drop all) →  
key? →  
sit on bed.

[The Bridge]

(viewscreen, stars, Cpt's chair

array of consoles, door S,

1st Officer Cmdr Stephen Richards,  
booth of matches)

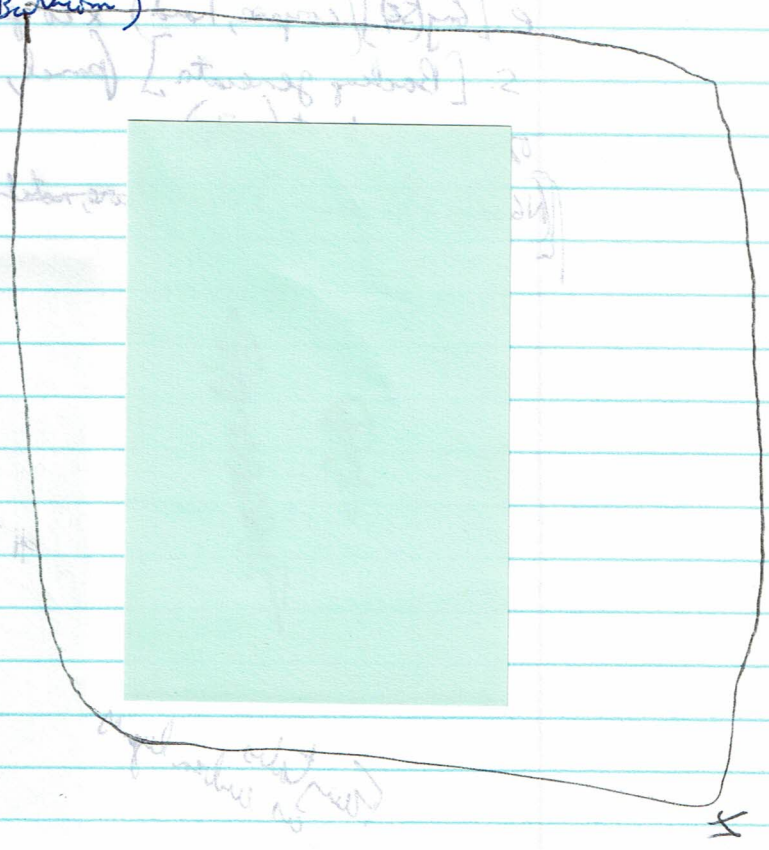
x matches. take matches (too much!)

x console (navigation, communications  
science, tactical).

(bag at Lrd bar) x viewscreen x stephen

ask stephen abt red light.

secret  
lines  
Haley





ask stephen abt ship. ask stephen abt captain. ask s abt me.

[Darkness]

open matchbook. light match. (ext door S, shaft Up)

ask stephen abt ship (he tells y to go to Engineering)

(cont vent) stand on chair, open vent.

[Ventilation shafts] (continues N)

n. [VS2] n. [VS3] (panel) open panel [Bentley]

(look ladder D, panel, megacore U, green btn)

d. [Cargo bay] torch, metal crate.

x torch. take it. push crate. u.

u. push btn. push button. [Darkness]

turn on torch. [Blm of coolant shaft] e. [Corridor] (w, s, e)

s. [Corridor (S)] (butter, sandwich, lift doors W)

x btn (upward) x sandwich (DO NOT eat sandwich)

e. [Corridor (E)] (G to S, door med E, panel by door)

x panel (no slot) s. [Engineering] (debris + bags)

s. [Eng. (sh)] (foodies, computer, James Frity)

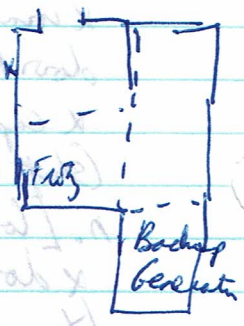
x Frity (seems asleep)

e. [Eng (SE)] (corpse, hand) x corpse (radio) x hand. take hand.

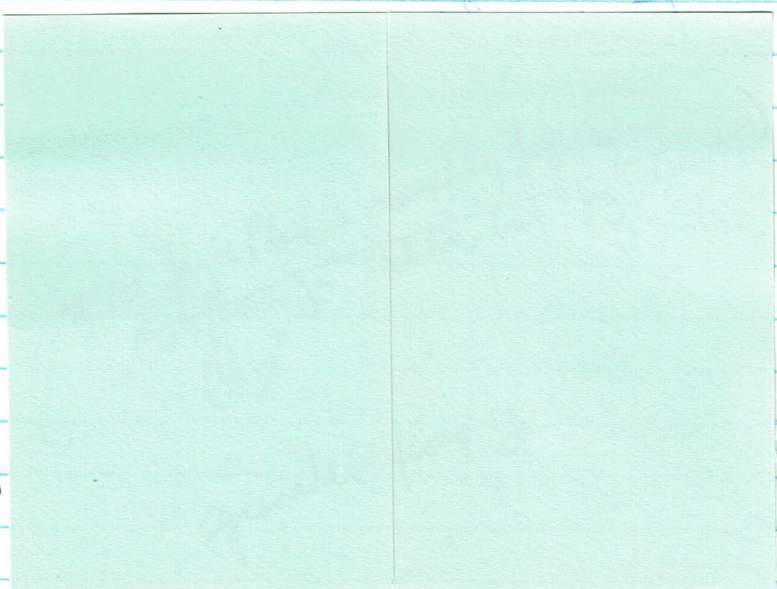
s. [Backup generator] (panel, green btn, circular compartment)

open compartment (enrty)

(No words) [Engineering] (back of case, notch (etc of explain))



Frity takes as carbon layers





not poke, no inject

2

(Corridor (E))

put hand on panel. [Medical Unit] (benches, table, report, bottle of aspirin cabinet (closed)) x report (Cpt in perfect shape)

open cabinet. (syringe). x syringe (stimulant) take syringe. take bottle

w. s. s. (shoot? administer?) give syringe to Frotz (he gives you to start up backup generator; hill meet y on bridge)

E. S. (no more matches)

(S) Corridor) push btn [Interior Lift]

(budge button, level one btn, level two btn, engineer btn)

push budge button. [Corridor] (Richards, Frotz, newscreen)

x view screen (see origin lamp 50 km from ship, party)

ask Richards abt ship (low hum) throw bottle. take aspirin.

2. (noise noticeable) eat aspirin. (x Frotz) 2.

[Void] (nothing to see) 2. 2. (win)

25 ~~24~~