

Quote: Learn to obey before you command. - Solomon

The Primrose Path
by Nolan Brown
17; 28; 2006

Eight times at Leo on cliff, but always a bell tolls & he goes over the edge.

[Bedroom] (on bed) at S, windows on other 3 sides, doorbell ringing downstairs.

BOOT: C/CONTAMPLATE x /THINK ABOUT x /REMEMBER x; ASK/A —; TELL/T — }

{ CREDITS, HINTS, ABBREVIATIONS }

stand. open door. S. [Halls] Leo's party W, stairs E, my bedroom N, toilet SW.

d [Staircase] window E. d [Living Rm] painting, front door SW (key in lock), stairs E, kitchen N

the key. open door (auto unlatching later, auto to Foyer & it's Leo. You're Metilda. He stumbles/faints; wamp/wet
x blood. x Leo (gold pocket watch on belt loop. His mother shot him? Blood in jeans)

+ blood. + wound (where did he shoot you? thigh) + mother (kid grandfather's pistol, but she found it, &
then she saw him go into the party in the garden) = ('go into the party?' 'You'll have to go it alone')

= ('There is your mother, why?' 'Here. I'll never get into the studio unless this')
i { old bronze key } { fix it so this didn't happen. Use the ring. It's in the room. You need it to be able to move anywhere! }

+ ring (It's the setting of the diamond... on the shelf. I'll see what room)
+ jeans (wound - you can't tell the police! Trust me! Now go!) + Irene (Come. She'll have forgotten everything by the time you find this)

+ pistol (It was in your flat. That's why you should call the police) + diamond (wound - the key to my gallery; outside
the studio.) (his eyes close) + gallery (his enormous) look [Foyer] Leo's 717A to NW. Your flat, 717B is NE,

door outside is S. // N of LR -> [Kitchen] windows on 3 sides, over of garden, ^{NE} front, accessories, table, cabinets
remember that step credits) // party in upper this: garden full of glow flowers.

NW [Front Rm] stairs W, kitchen N, locked door NE (Irene), foyer SE.

u [Staircase] u [Upstairs] rainbows, toilet SE, ~~Leo's bedroom~~ N ->

[Vacant Rm] windows & curtains, abstract canvas E. x shelf (g.) x ring (engaged)
fake ring (Taken, damn you.) // take watch (25 to 8, cut (abs in nonchance))

prob btwn (b & w again: time has stopped) // Lark songs by in garden party.
(my bathroom door can't be unlatched/opened properly) / Leo's bedroom is locked (blue key),

Leo's garden locked (green) // turn ring. enter party [Shy Pavilion] garden to S; Leo runs off (now
around S: 30 sec)

S [Other Garden] N/SE/SW/S (etc); Leo climbing over hedge SE.
SB [Earth Pavilion] stone key. // S of other -> [Pagoda] gate S // SW of other -> [Sea Pavilion]

(with rose petals in b&w - are the petals climbable?) climb petals [Up a Tree] bird's nest (2nd gate)
i { ring + watch have vanished; ankhs - shaped key } / unlock door with ankhs -> [Whiterose]

door (locked?) unlock door & bronze (south hole, it broke?) unlock door with horse key
-> { ring reappears; back in my LR }

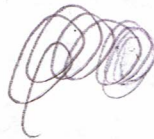
4 galley - key is on roof of cabin (no ladders)
E beach - cabin is her studio (locked) (she has the tiny key part)
a key - she hands it over
thank you
+ patrol (it's in ocean)

se → [water closet] (my feet w/6, his NW)
- sapphire key.

INJUSTICE
ANYWHERE
IS A
THREAT
TO JUSTICE

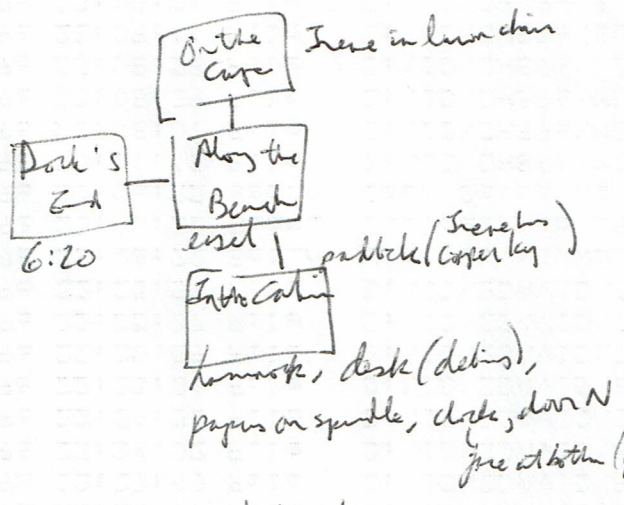
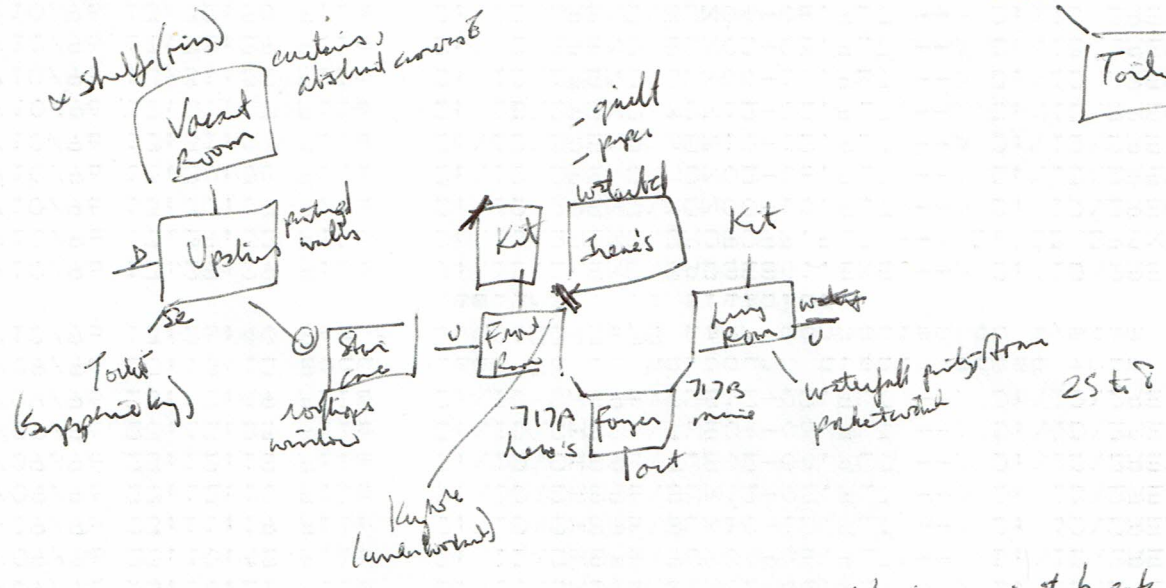
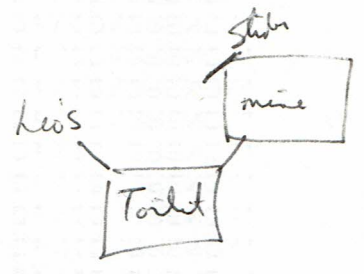
1728 apples
Group of 12 friends has 144 apples

144
-13
131 apples
+20 oranges
151



The Murrese Path

- they into blocks
- ring (collar you can't be able to move) in her room
- setting of the demand on the shelf
- the key to my gallery's outside the shower, if you can find it.



He was going to break rule
 - rule - No duplicates already.
 - missing here? missing key
 - paddock (she has the key), correct a tiny key
 (Irene has a core) gold handle -
 unlock paddock with copper key

hammock, desk (debit),
 papers on spindle, clock, door N
 fire at bottom (pendulum at eye level)

deck - box
 open bed - keys (amber key, rubber key, sapphire key, jade key, of the Allen missing key)
 (Toilet) (Bulldog - broken)

more one key open Irene's
 quilt => party of Ivy.
 (Irene's sheet about Ivy)
 (Irene's older sister as a child)

Ruby key -> Vacant Room
 Amber key -> He's Kitchen