

look through scope: see red plastic extensible arm on south side

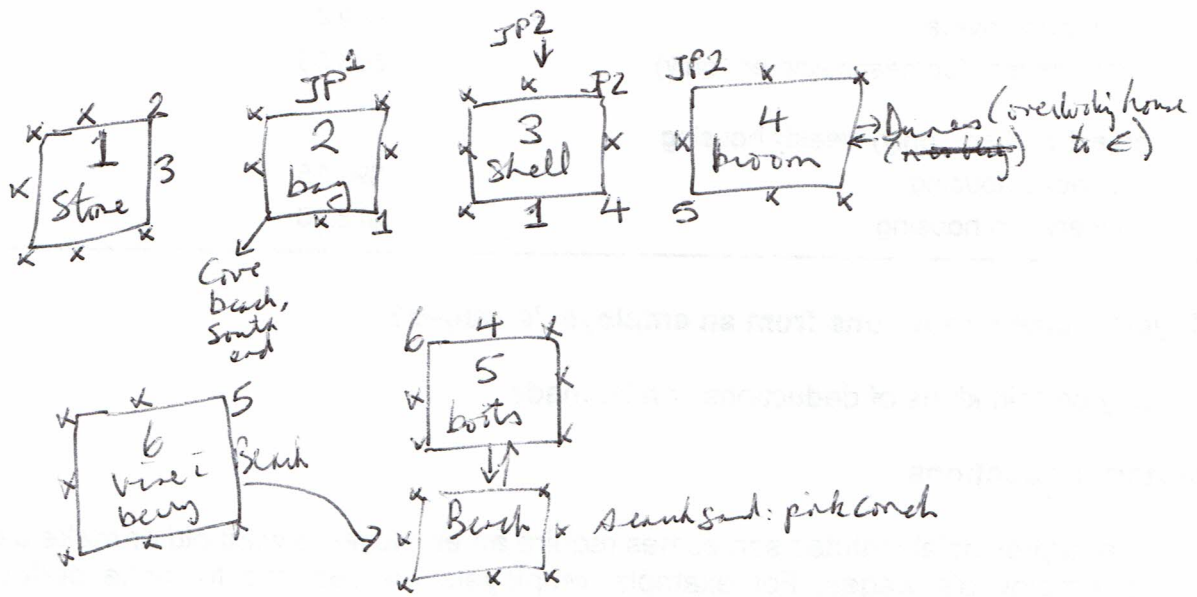
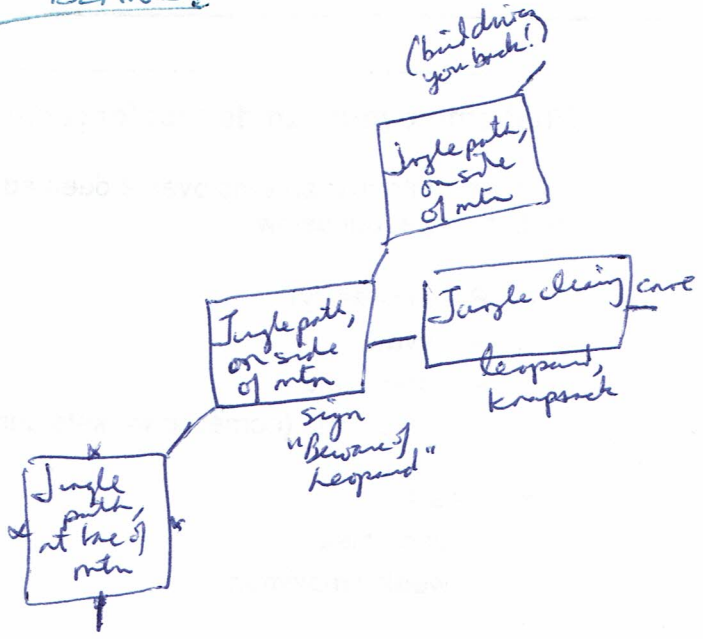
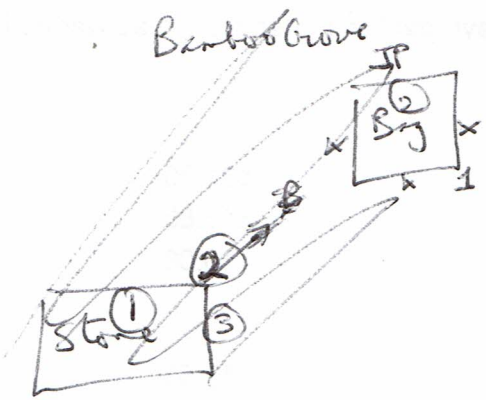
x signs { one 3 bottles; point ~~at~~ pie to order only; select drink before paying; least one per customer }
 x pictures { water, tea, beer; cost: 1 shell each }
 read notes (from water tower) { somewhere on the island I have buried survival supplies in a box, the code is... }

Park Office { posters, water, chair, basket, ~~coaster~~, jar, official/royal }
 { "Park Property" }
 { mouse }
 { tell Roger about net } (you can take fish)

Park { hammock, chair, swing seat, crate, ash tray }
 Beach @ P.O. { Rastafarian non-E glass pig } - lighter is out of find
 { chili pepper on nut tops }
 { fire pit; nut if gave food of R.I. dove mouse }

farmhouse - woman, crow
 Cur of bird repellent, rocky dune

REEFER ISLAND



Outcropping - ~~plant~~, bushes SE, create D (need rope or ladder)
 search bushes (see path 4)
 U, SE → [Top of Outcropping] tree is nut
 NW/D → outcropping

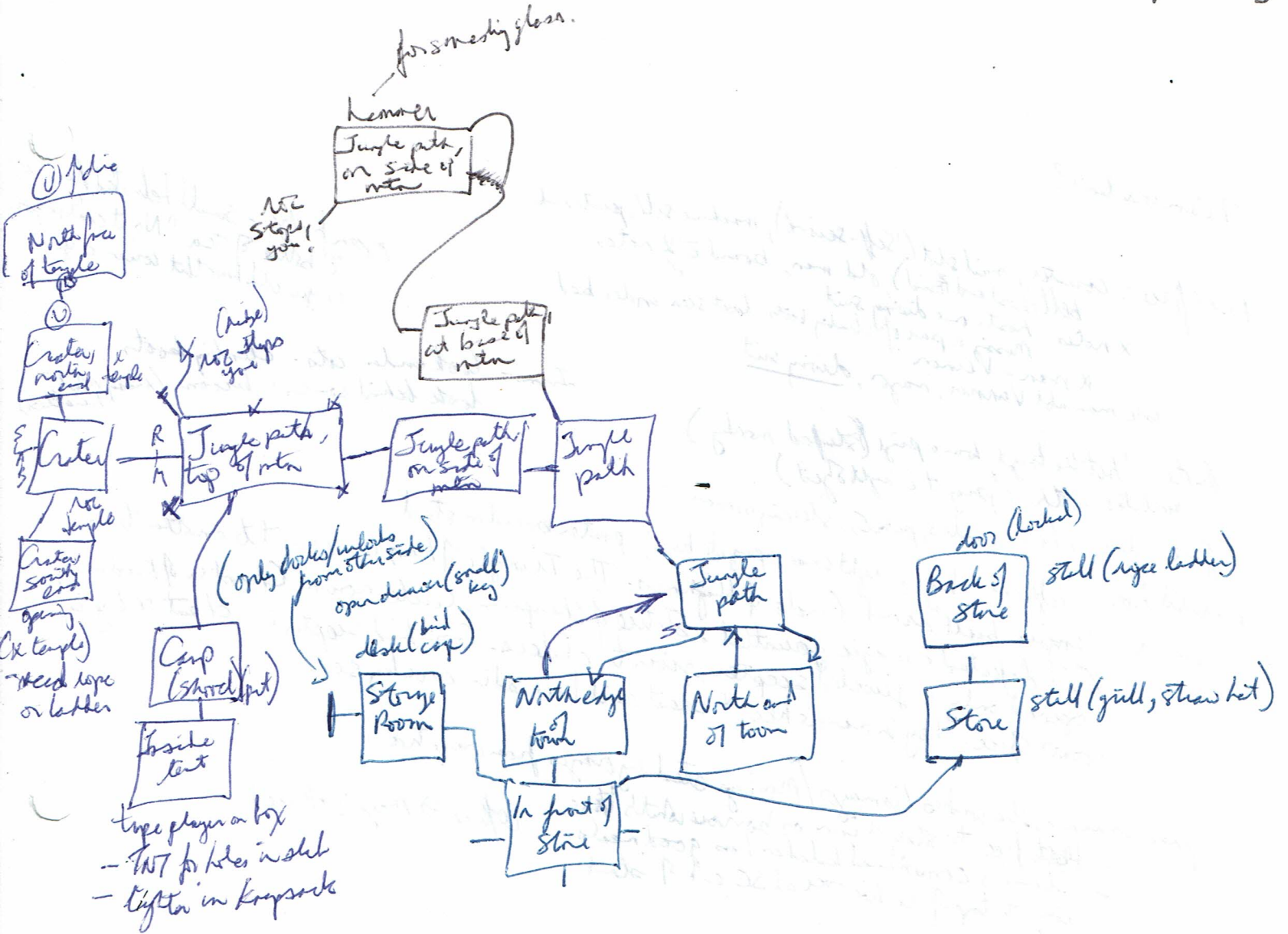
working (from storage room)
 - its invisible key (myon ID, A)

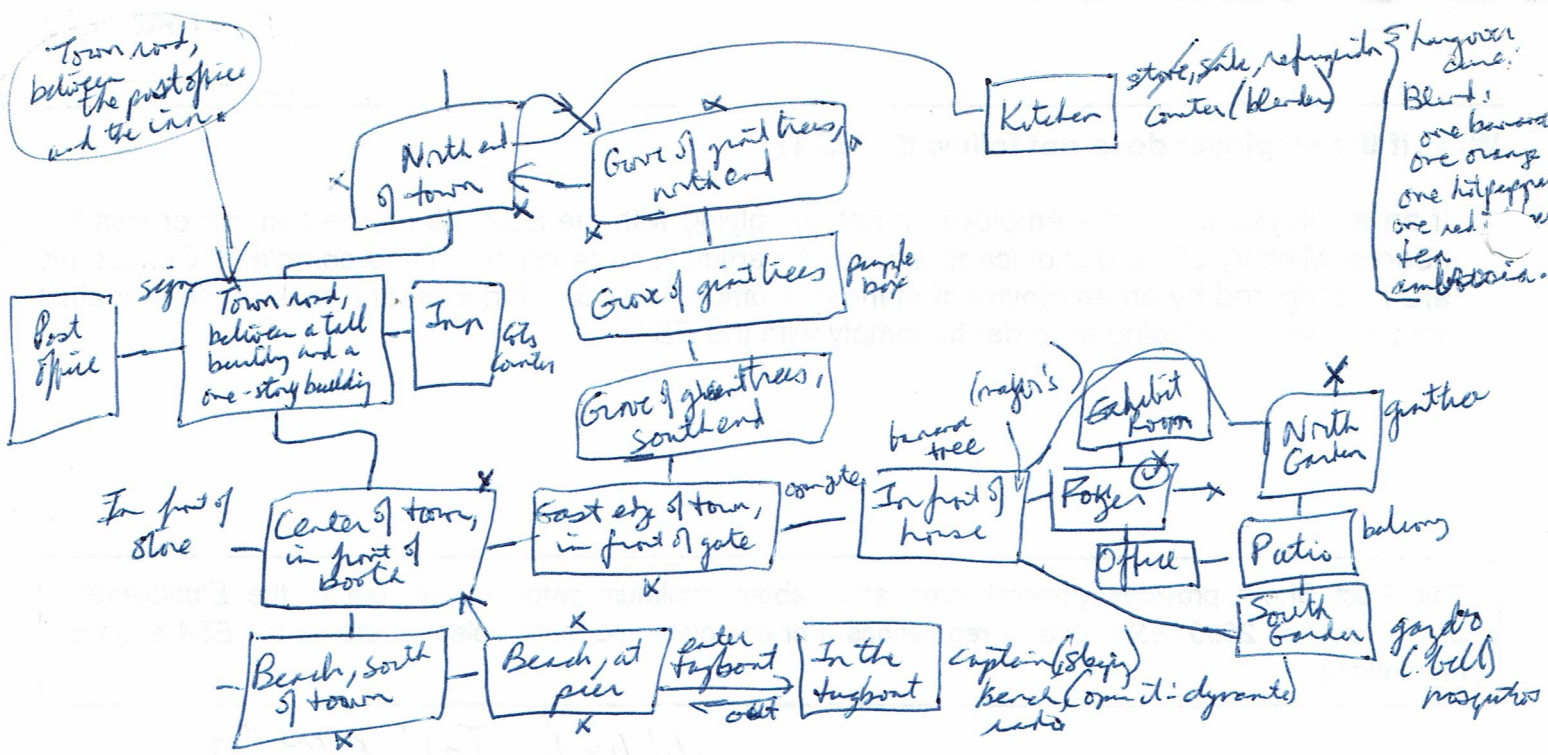
What if the employer does not follow the ESA?

If an employee thinks the employer is not complying with the *ESA*, he or she can call or visit the nearest Ministry of Labour office to discuss a particular situation or to file a complaint. Complaints are investigated by an employment standards officer who can, if necessary, make orders against an employer—including an order to comply with the *ESA*.

This Fact Sheet provides general information about minimum wage as set out in the *Employment Standards Act, 2000 (ESA)* and its regulations. For complete information please refer to the *ESA* and the regulations.

metal box from Tj's of primary
{ jump poster, knife, can of mosquito repellent }





7 item ind limit?

Post Office: counter, mail slot ('self-serve'), machine sells postcards.
 bell (postcard board), old man, board c 2 notes
 x notes: host: one diving suit
 x man - Vernon
 ask man abt Vernon, mayor, diving suit

open fridge - small helmeted humanoid
 c bottle of tea "No, it can't be you,
 or you could have that coupon c you"

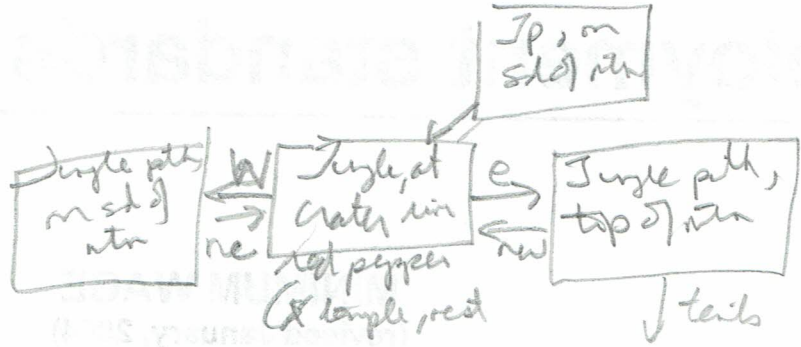
Inn - look under cots: climbing boots
 look behind counter: broom (missy mat
 brushes)

Booth: 'hit the target' win a prize (stuffed monkey)
 unlatch booth (pry it c right of joint)

Office: desk, chair, window, papers, sleeping woman

Exhibit Rm: left case: key; right case: purple box; poster board on stand
 board: temple built around Circle of Highness. The Triangle of Huxis opens it to another time.
 Evil defeated c magic gauntlet, statue of Champion. Circle now in Chapter of Kindness,
 opened only c jeweled scepter, given to elders. Gov hid scepter in chest & key in
 town office. Key in mayor's hse, & chest said buried in cave by sea.

push woman - she works/is mayor/ Monkeys steal by oranges from orange tree
 - food free to stay at inn or borrow what's there.
 - island's communal kitchen has good meals.
 - way to top of rocks over at SE end of island
 (Office => mayor's office)



The purpose of the Employment Standards Act (ESA) is to set out the rights and responsibilities of employers and employees. It covers a wide range of employment conditions, including minimum wages, overtime, vacation, and termination. The ESA applies to most employees in Ontario, with some exceptions for certain professions and industries.

The ESA is administered by the Ministry of Labour. It provides a framework for the relationship between employers and employees, ensuring that workers are treated fairly and that their basic rights are protected. The Act is a key piece of legislation in Ontario's labor law system.

The ESA covers various aspects of employment, including:

- Minimum wages and overtime pay
- Vacation time and pay
- Termination and severance pay
- Employment standards for specific sectors

The Act is designed to provide a baseline of protection for workers, while allowing for flexibility in other areas. It is a fundamental part of Ontario's social and economic policy.