

- need money. Count & Marie have vanished (search for list)

[INFO] [LICENSE] [CREDITS]

start at Kitchen Garden (Wiswall), herbs (bay, parsley, ~~mint~~), door, ditch, pipe well, dandelion, roses, shed to SG.

{ E: dashing hat, swordstick {sword?}, snuffbox (closed) }

think about box (only reliability perform favori d'Armoire. Don't ply mge on Maquis)

Info: Link X to Y (things done to X also affect Y)

W → Kitchen (furniture, tables [board, delicate confection], andouillettes, beans)

E: garden, W: Lon, N: Scullery, U: Attic
oven (shelves)

X paper in fireplace:

We want /- Make the thing shut by itself, annoying to have to close it every time.

- Lentil soup recipe [Don't?] /- Souffle recipe as Anton keeps into the kitchen

- Tea (for son not picky about kind of leaves)

- Recipes for ices? /- Maybe nice garnish /- Sauce!

X confection (box, clockwork, dial, spindle, cylinder)

X cylinder (bumps + groove), paper label (Andouillettes Recipe)

read recipe (andouillettes, olive oil, dry white wine,

single yellow onion, sea-salt)

X dial "SHAPE" - current setting: NONE

turn dial: LEAF, ROSE, FISH, SHOE, HEART, NONE

(cont's) Scullery counter, washbasin, cupboard

sponge, butcher knife, sock (single yellow onion)

Cupboard { cup, plate, hinge-lidded teapot. }

X cup - metal one "linked" to all cups.

(crest - indicates link - cup, plate & teapot all hinge d)

look in hole (in pain) - silver cylinder ("Tea Recipe")

Servants' Dormitory

beds, rack for drying, fireplace, handkerchief (note), beds are messy blankets
 look under beds (cylinder + crumpled paper)
 read crumpled paper - your name in Marie's handwriting & var. honorifics.
 x cylinder (Lentil Soup Recipe)

readable: lentils, single yellow onion, water, clove of garlic,
 bay leaf, olive oil, sea-salt.

remember fireplace (Anton's wife Leonie hid coins behind a brick)
 brick is stuck. What to hit to work?

Kitchen Counter

stairs D, doors W to main hall, stove block.

link bread to brick (+2)

- doors are painted & crested & locked

K - stand on table. Jump.

In garden x well - water, bar of iron

think abt well - count, coins, servants, peasants - Father climbing down.

think abt father - dead

mother - not sure whether she lives. Absent for yrs.

Soak bread in water.

brick broken → brick cracks & bag on a string is revealed.

link teapot to door, open teapot (doors open!)

Dining Rm (+5 on entry)

chandelier, table, wallpaper, paneling, columns
 exits W, SW, E. (want something to eat)

- thru windows see flower pots, hedges, topiary, statues

- x table - Baroness of Verchy was once elevated by table (!)

think abt wallpaper -

man linked to armor, & armor was slashed (told by Countess Anabelle)

man confused reverse-links & ordinary ones. Reverse-links are harder.
 unlink doors (✓)

W → library

Library

bookshelves of books, clockwork model of universe, portrait of Count's father
x model (has planets, moons, holder for solar.

Planets are metal except Jupiter

Model is unsuitably hooked to sonality in the fog of the S.

think abt model (Marie has a mechanical mind. Put the light in, then make it go.

x books (On Vegetable Oyes, Clock Repair, Guide to Assorted Wires)

again The Lavouri d'Aracene

read Lavouri: special mirrors enhance linking; they fail to reflect
in the normal way. Link their mirror to reverse-link dissimilar items.

x portrait (detailed clothing & wig)

- Countess saying abt you: He can make links -

Pierre's mother isn't old enuf to have dallied w/ Count's father.

"Something y're not telling me." "I'll tell y, Ana, but it is not what y think..."

S → Entrance Hall

marble floor, yellow silk hangings, staircases U + D, door N + NE. (S to west)

Mechanical clock w/ figures that pop out

x clock - free, pendulum, pair of weights, door. Not ticking. "10:13"

x face - numbers 12, 3, 6, 9; silver hands (hour hand 1" shorter)

x hangings - cover all of west wall?

look behind hangings (very heavy) - door, locked, w/ key in lock. (NE → Dining Room)

U → Staircase, First Floor

E → Salon, N → Rosewater

N → Old Conservatory

W → Marie's Rm. On high shelf: celestial bauble. Pianoforte

bubble of glass containing sun & stars.

x pianoforte (no music in stand?? Countess made compositions)

W → Marie's Chamber

N window, wallpaper & floorboards, mirror, desk

x desk (2 drawers) top drawer (household papers)

open bottom drawer (dark box (mirror inset, pearl necklace, old letter))

x pearl necklace (diamond pendant) reminds you of onyx bead bracelet

x letter (sealed w/ Count's ring)

— girl who parties (y recent d)
Long Salon portrait, rooms N, E

readt - Baroness D'Envois at young age,
distant cousin to court, & also related to man hold yr notes.

N → Countess' Sully Rm.

Passion ring (lapis + emerald), glass case of clockwork figures.

x ring - thick & comfortable. peculiar pattern

x case - DO NOT BREAK!

dancers & bee

thick abd case - Countess said, Sometimes I feel like one of these. Trapped.

They are mid of gears & magic links. They have no choice

x dancers - lady in skirt of copper, gent in silver ruff. Skin is waxy.
They stand on a floor of cogs.

x bee - wings of plated gears. Tail of poison, stings anything it lands on.

x tall door - locks by itself when closed. Submits to no one else's links.

Responded to touch of yr hand. Key to servants. (Door forgotten yet)
thinkt leads to Count's study (used to be yr rm as a child)

open contraption in kitchen (gartic)

Dining Rm wellpans

x fox - probably next as allegory for cleverness & deceit in court, but y always
rather liked the fox. Your hat looks a bit like his.

x girl - gown begins as deep blue silk, changing to peacock feathers. Vanity?

x queen - a pearl, green, magnificent dress. Vague finest expr.

x women - all identical, like nymphs around Venus.

x columns - pseudo-Corinthian, \bar{c} coveled acanthus leaves & scrollwork

x proding - waist high

search panelty - not in most public room of the hse.

clock pull to crypt (clock ticks suddenly)

look in clock - dandy make out mechanisms

- Starting clock also starts planet model
- Saturn is gilded & has a narrow disk of metal around it
- Jupiter is copperish & pierced thru with a lens in the center
- moon is a pitted pearl
- Earth - blue & green
- Venus, Mercury, Mars (small) No Neptune, Uranus, Pluto

x on vegetable dyes (how to dye cloth)

- read it (onion skin boiled in water produces a pleasant yellow colour)
- * prob. yellow handkerchief to link to silk hangings.
- read "Clock Repair" (pull up weights to begin operation, inner diagrams)
- read "Wines"
- iii Mead, & wine made of honey & very sweet...
- iii Some dry wine such as Sauvignon Blanc...
- iii should then attend to the possibilities that the vines have been tainted...
- iii from the region of Avignon, in the territories that belonged to the Pope, comes the peppery red Chateaufort du Pape...

peel onion → onion skin, peeled onion

remember onion → chef who was here when you were a child

the mirror in the box provides light!!

take the necklace [+4] (cut ~~the~~ cut case with its diamond)

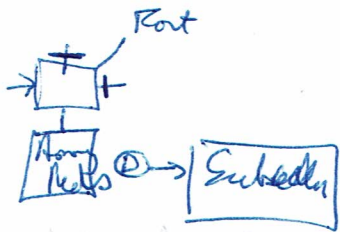
like inset to get wood mirror. (inset mirror is now a ^{good} light source!)

Root Cellar (door E) boxes & barrels

look in barrels (take a vanilla bean)

- green apples, salted pork, lentils

E → Bottom of Savard's Staircase (wine cellar door (wood c. bars) E)



Wine Cellar Antechamber

- open grey/blue door S
- closed red door E
- open magnetic door NE
- red door in chair N

Among Reds (labels, racks)

Close N door → trapdoor opens!

closed magnetic door E

Wine Cellar (had grey-blue trap door D)

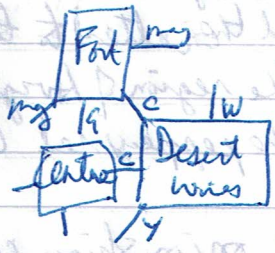
open g-b door N

Subcellar - maie had storie abt oubliette in the wine cellar.

- blue jar of sea-salt
- red jar of sugar

Fortified Wines (port, tokay, sherry, amontillado; casks, bottles)

- closed mag E
- open cyan SE (washed open)
- closed green S
- open mag SW



Desert Wines (bottle of need) Cook

- closed yellow SW
- closed white N (streaked?)
- open cyan NW
- closed cyan W

x white wall (had darker color; was white washed)

Center (cylinder - Chocolate Recipe: dark beans, sugar, vanilla bean)

- cyan open E
- closed green N
- closed green S
- closed red W

LINKED INSET, slow in maie's room, Buble in inv.
 (REFLECTING BLACK LIGHT FROM THE TINT GOLDEN SOW)

Shed - nest stems, rodent droppings? rope ladder (~~hanging~~)
Well - put ladder on bar

Iron key unlock magnetic door E of Army Keds

Army Whites (bottle of Sauvignon Blanc)

closed N (opens ✓)

closed B E

open M W

Spanish Keds (wine barrel)

open barrel - navy bundle

open bundle → cloaks, documents.

↳ navy cloak for woman, lined & sewn down.

X documents - Count's writing, bound in thick oilskin.

read document (+ 2) blood dunks in black, human links in red.

charts show D'Erves (Count woman & yr distress),

D'Erves' mother (deceased, formerly hostage-linked to Countess)

- maybe hostage links are unstick?

open south door ✓ (it swings more likely than most of the other doors)

Put my under shelf of conservatory.

throw sponge at bottle → ~~sponge~~ + bottle on floor

take bottle [off]

put bottle in holder

liquids repel biology (can't link sponge to mud)

handkerchief can be cut & knife

X go thru door - keyhole plate (ornate key)

plate is decorated & crest of family

take keyhole plate?

keys resist locking to each other.

feather is pure white

ink sword to knife

Skullery! put sponge in hole
empty pot in bin

link sea to bumble [+4] "The World is Hollow" (book)

read it: / followed out → jeweled pin

x pin - decorated c fire-chip door, shaped bow. clasp is shut.
take pin [+4] (41)

Count's father said to be greater diplomat + master of locks in France.

(~~cost~~ like the postcards)

Slide under

some liquid in cup
(squeeze sponge)

link stopper to ~~code~~
near

open jar (read open)

take tin (+4)

take down (PS) (50)

Cheese corner

- green glass jar (—)

- silver key

- chest (stone)

link top drawer to chest (not quite)

x pin in gold-wood (backwards)

Publca areas -

Blue door

Red doors

Tall door

Well

Basin

Glass case

Gothic Door

Letter

~~lock~~

put X in (basin hole)

- block (wo)

- swordstick (wo)

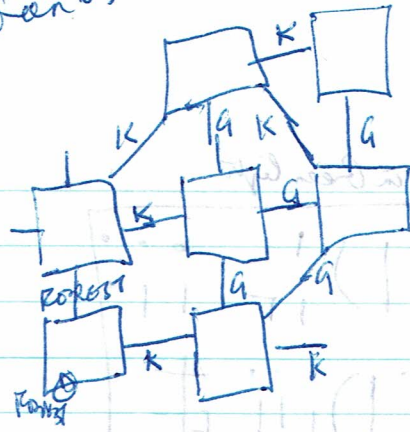
- sword (wo)

- iron key (1/6s + slub)

- crumpled

light
red ✓
white ✓
blue ✓
black ✓

Open light



(look at key in different light!)

Scrape white door.

leave blue light at white door

Cheese cones

- key hole, chest, key,
- green jar (cheese, oil)
- open chest (sales, blue)

Andouillettes Recipe

(sausage, olive oil, dry wine, onion, sea-salt)

eat cooked - fork??

silver key - reddish string

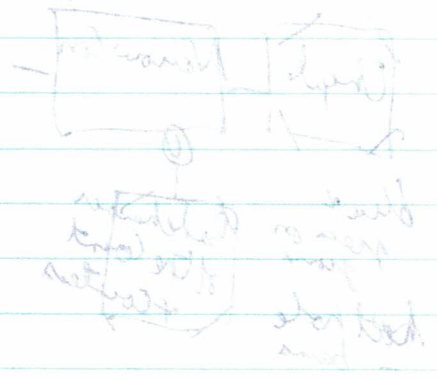
Wine Cellar Vault

pré chest { fork, spoon, table knife, corkscrew }

Chateauxineuf de Pape (pepper red)

[+5] eat (holdy fork) [+3]

Yawning after eating → tea?



- unfinished letter from Marie to Count
- sh refused D'Ervers hand; but he won't desist.
- D'E hired a maid. Sh moved into Count's Rm. Shut away valuables.
- Will try to get to Pierre in Paris. Wish sh knew what Count intended.

look in trunk - bracelet, ivory silk gown, pair of shoes
 (onyx beads) (beats, pliers, bows) (heels have diamond chips)

take shoes [+4]

sleep → see Marie in bowl of water, cuffs & tattered gown, stone room.
 → strange wardrobe odd markings. Underground, or underwater [+5]

kill rat = sword (It dodges - Need subtler strategy.
 (repeatedly +5) (have cheeses in jars)

III can be used to view the other member of a story late. Under most circumstances there is a word of some sort required to activate such viewing devices.

"(Our mirror from the workshop in the RUE DES ARBRES) (94 pts)

Unlock tall door = gold key

Count's Study [+5] (window S, fireplace E; ransacked
 secretaire in splinters. N to old bedrm)

Fireplace has crest on mantel

in fireplace (Remains of papers - remains of Countess's music)

secretaire in chunks & drawers

x wreckage (think about wreckage -

- Count & yr father talked; father saved Marie, father said, we have many mouths to feed.

- crest is wessel, couchant, or green.

Your Old Bedrm (now a sitting rm)

window sill (vase, dead roses)

x vase (stone & cylindrical - shape of well)

x roses (dried) think about roses

- talk to Maman. Sh refused to enter hse, & questioned if anything wrong.
 (heating, leaning, food)

hide vase to well. empty vase (water in well disappears)

put ladder on bar. (need both hands)
put tumbler in box, put box in bag - wear bag

Deep in the Well (opening to N)

N → Deep Room (+5)

(feel web of protections.)

rounded stone (loose?) heavy box {important paper, gold coins}

read paper - order from King. Baron D'E named traitor & perfects Mhairtan

- matters to be private; D'E is not to be killed.

- Marie is female heir, & anyone she married will be the rightful Lord. (+2)

- take golds (+4)

- move stone (strange mirror revealed)

- mirror surrounded by odd markings. spot at bottom is warm. Marked's mark C

l in mirror (clouded)

portent by Hyacinthe Rigaud

Sonne? Souffle? Please?

M. Couligne in the Rue des Arbres

Say COULIGNE (+3) Touch spot. See Marie in tower,

cot, clothes, D'E emblem, cuffs, window, bars, tower

wea bracelet.

link bracelet to cuffs. Remove cuffs. (+3)

link pin to window, open pin. (window open)

D'E nous enters (Marie has round pillow)

reverse link stone to pillow (She wacks him hard)

124 of 125 →

link sponge to buckle.
(makes sponge more like buckle)

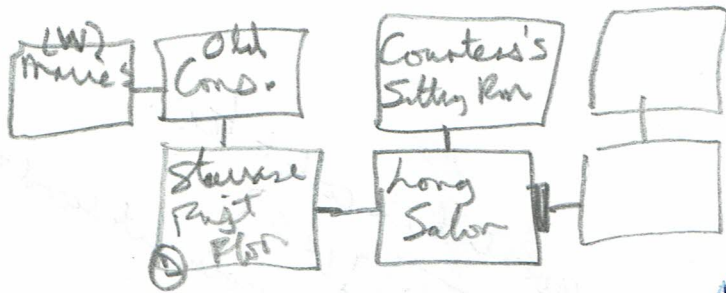
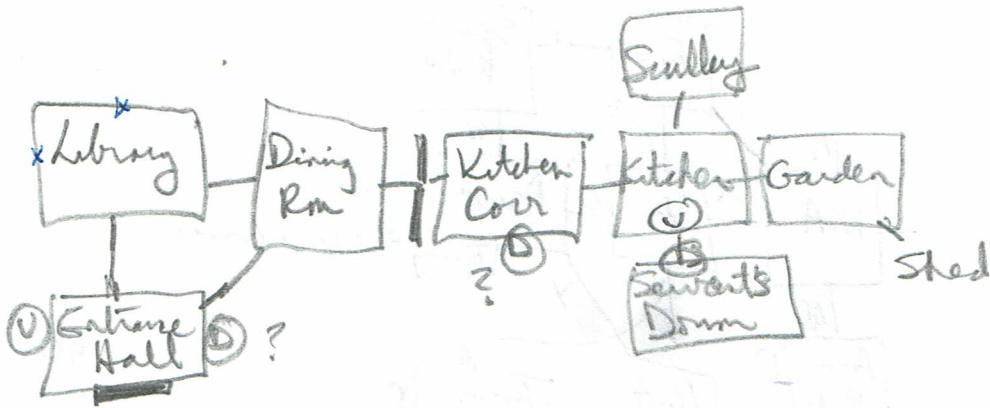
reverse link sponge to buckle
throw block at buckle (buckle falls,
but doesn't break.)

cont like
chocolate shoe
to Marie's shoe

Caamen?

drop the
opentier
put good
cheese in tin

+5



reverse like letters to daveus.
- each syllable letter books + slides.

part X in brain hole

- | | | | |
|--------------|----------------|--------------|----------------|
| <u>flows</u> | <u>stays</u> | <u>plugs</u> | <u>NO</u> |
| water | iron key | bumble | sword |
| | crumpled paper | sponge | swordstick |
| | coke | | lock |
| | pin | | string |
| | papers | | cloak |
| | necklace | | cup |
| | old letters | | kept |
| | | | knife (skin) |
| | | | tin |
| | | | hat |
| | | | daveus |

bag tea - greenish bag tea
 hin shu - yellow dye
 mint tea

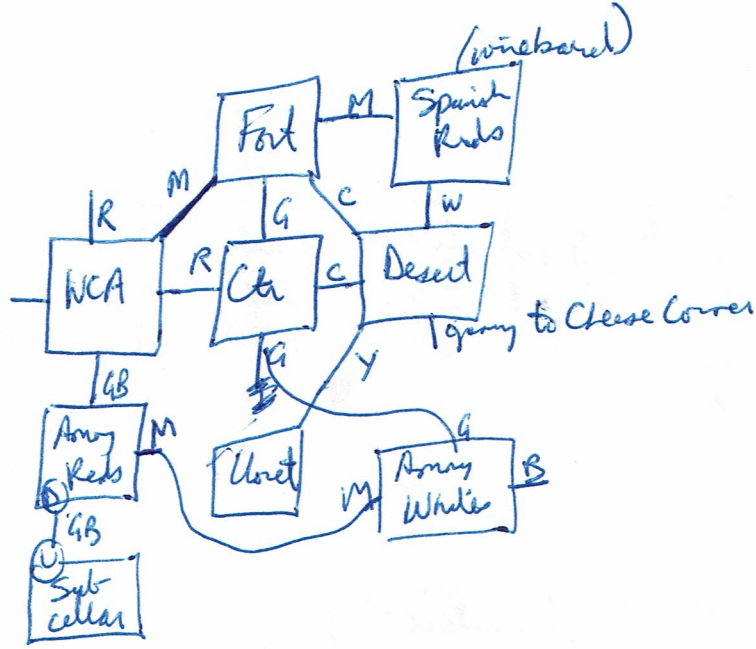
take coins (from bag) [+4]

play area
 chopsticks/joins
 waltz
 minuet
 opera piano (sticks + horns)
 gavel [+1]

push onate key i sword
 (key is joined in place)
 chime (metal sticky cloth)

M. Conligné
 - she was in well!

Maries & me are locked
 - moses, letters of words, defense.
 (only proper light shows it)



GB is "nest" in red light

mat tea (black brown)
 don't want to drink it?
 mat bubble in glass jar (jitters)

take for
 when

reverse link code to tea
 [5] [4 5]

can reverse link sword & key

||| (B2)
 ||| (B1)

Clasat
 - metal tin (dark beads)
 - iron key (magenta string)

Close the bronze door
 to open yellow

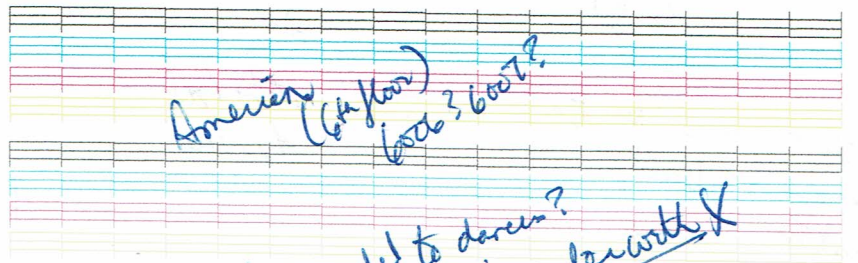
Cheese Corner
 - heavy chest
 - green glass jar
 - silver key

Easter egg recipe
 - eggs in colored shells,
 - butter
 - sea salt
 - hard cheese

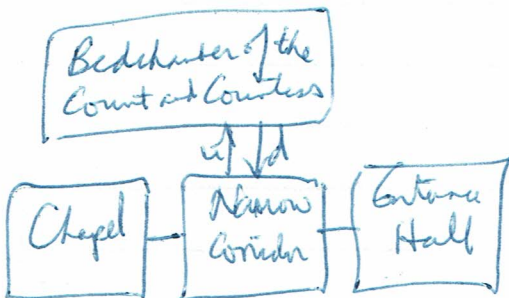
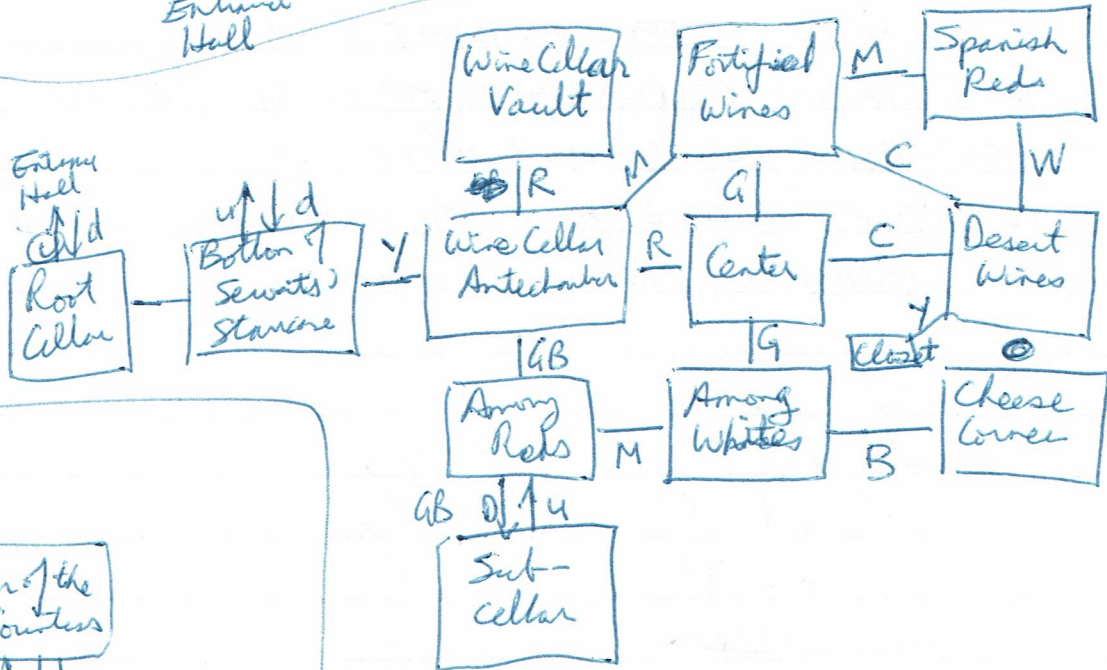
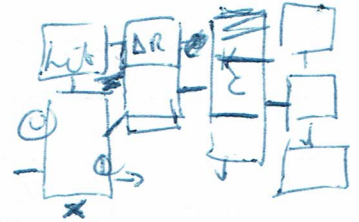
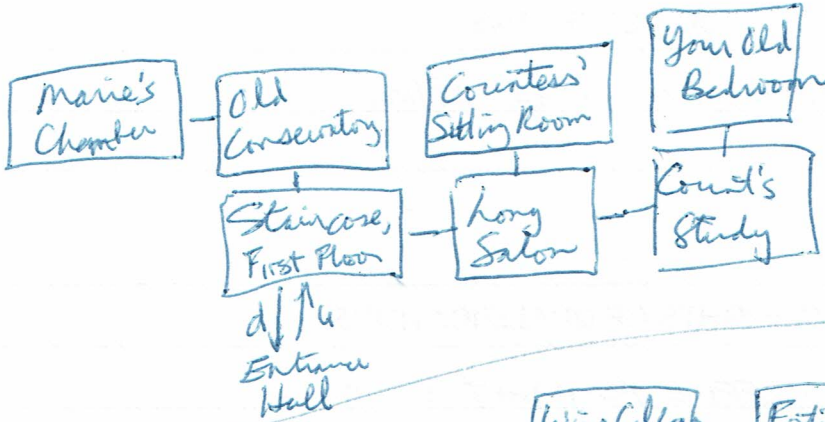
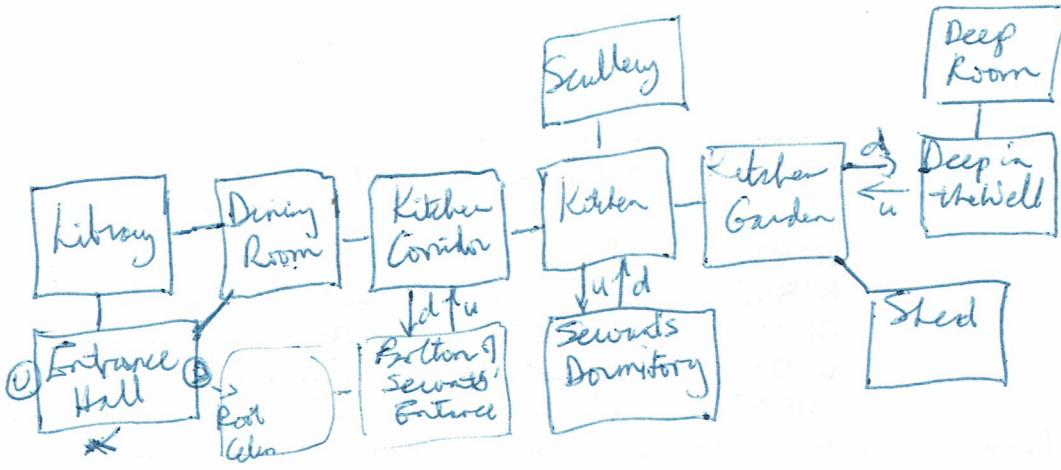
(all squares of prepared chocolate)

dark beer + vanilla + sugar plate (+4)
 x ~~chocolate~~ chocolate

take chocolate over to house!
 L+3 → uses melt away!



Milk model to daren?
 push bar with sword.



EFO = yellow
 ||||

W - white
 AB - grey-blue
 R - red
 M - myrtle
 C - cyan
 G - green