

= [Prologue] =

x me, ropes, midsection, walls, exit, ~~is~~ out →

[Swallowing Down the Canal] cord choking you! (ghostly shapes: lion, Dragon, Fenest)
(wain) (my) (rope)

x dragon. {choose!} choose dragon →

[Home Delivery] mother, fireplace, midwife x mother (midwife approaches c 2 blankets: blue + white)

x me. (You are a strapping young woman trained in the arts of magic.)

You are in [TAOS-1025: very number of arguments to built-in] excellent health.)

take blue → (18 summers later) [Outside the Keep] 9 rings, the 10th Ezechy's symbol, the Orbis Sapientia, awatryon gates N. i {stuff, rings, backpack, amulet of perceptor}

x amulet (when in danger, it turns black.) (Health 30 of 30 Treasure: 0 of 27.)

(Released: 0 of 18 Turns: 21)

N → [The Gates] walls extend W + E, gates c Eselaten's sigil. (his most popular spell was water)

x glyph ⊖ (pitchfork like) e → [Southeast Corner]

- Spells {
- ARSI - item glows
 - DURESCO - spell of seeing
 - ATTONO - stunning spell of thunder
 - CALESCA - warmth
 - EXUBERO - expansion
 - PERCURO - antidote to poisons
 - VOLARE - weightlessness
 - LEXI - language translation

N → [East Face] meruka.

N → [Northwest Corner] boulder (out of place)
volare boulder → boulder rises to eye level, passageway down revealed.

D → [Under the Wall] door W

W → [Underground Hallway] (ceiling looks crumbly)

W → [Underground Hall] (way E collapses!)

x light (weightless) W → [Pantry] cracked jars, hidden U.
(one jar intact)

U → [Kitchen] scamese cat jumps onto your perch; sink, cupboard, cabinet, shaft, exit W.

x cat (she intros herself as Theodry, a cat c 9 tails). Tell cat about re. (T offers to tell abt topics, eg: Eselateny Keep, herself, etc)

abt Theodry (catenae has kept her + sits here for over 200 yrs; wants to go home)

abt catenae (focused spells in obj, usu. crystal; breaking one frees its captive)

abt siblings (9 of them: boys: Jeremiah, Chardon, Clebren, Lied, Coronach.
girls: Cavativa, Kyrie, Aubade, + Theodry (left)).

abt home (nothing like this. Open + airy, grass is sweet etc)

abt Eselaten (obsessed c research, insane at end)

abt Eselaten's fate (he's alive, but lost in a place where time runs at a different rate)

abt Keep (built my magic + hard labour both)

ask T abt juts (need counter spell or teleport spell in laboratory)
 abt laboratory (E was obsessive dimensional travel; angry mobius worm on 4th floor)
 abt mobius worm (4th creature. Don't antagonize it.)
 abt tails (named for T)
 tell cat abt rigs : open cabinet {magic map}

W → [Sewer Hall] mellow snail N.
 man-shaped monk (Study) demands password.
 he's a water elemental; only kitchen stuff knew it.

N → [Cistern] chain. look in well. x object.
 volume object. take tear drop. (it's Study's cistern)

S. break tear drop. (+1 freed)

S. [Long Hall] stairs W

→ [Foyer] study S, cloak room E. x sheets

E [Cloakroom] coat purp, core, Cape of Good Hope, goliath hat & phone.
 (tremor?)

take eye - a huge millipede almost bites you! (millipede isn't tugged)
 pendant warns you not to open jar in open air.

[Courtyard] p 252 of E's journal. Carriage the W, stables E, ~~dragons~~ S

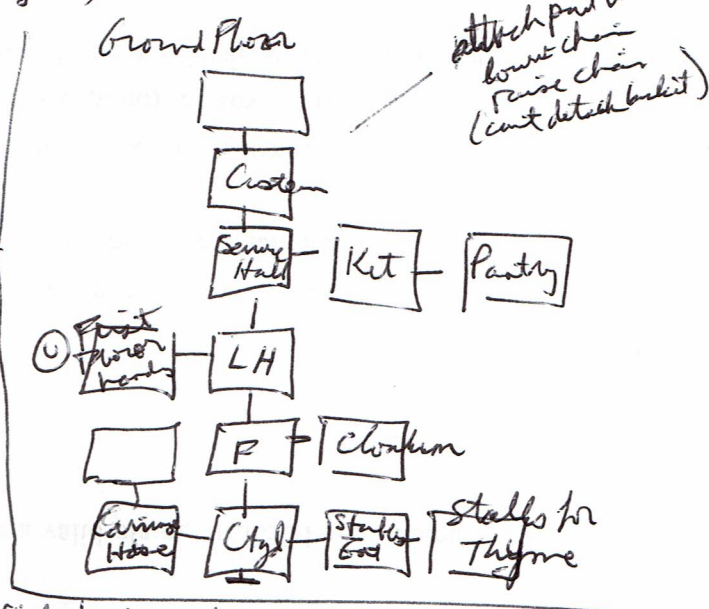
ask cat abt tailor (Coronach; he preferred to dance) ~~spare was~~ he was drowned?
 orcid (Kyrie; ~~he~~ summon K i a bell to clean messes; she soft spoken, clean, black fur)

e [Stables Entrance] bundles, blankets, saddle, bucket, pail, stalls E; "Thyne lives here"
 Thyne used to be E's transport; she died/hit died 45 yrs ago. Now external repels illness

e [Stalls for Thyne] help, Thyne (ghost horse)
 ask Thyne abt herself (a punner) search key → trapdoor
 ask Thyne abt cistern (she can't say where he is, but E liked to hide them in places that related to its subject)
 open trapdoor {puzzle box} L to R (containers, walking, galloping, trotting) — order by speed
 (3) (1) (4) (2)

x yellow crystal. break it (+1 freed)

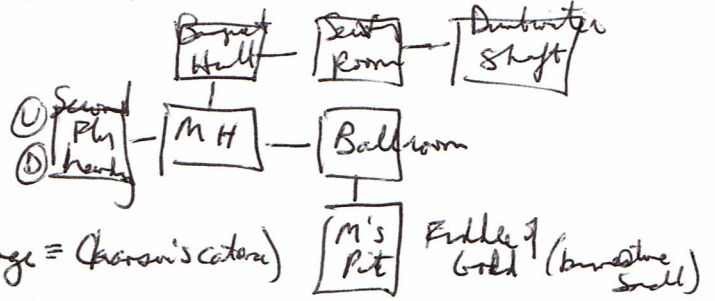
[Carriage Hse] chandelier, demonic figure (danger), jeweled device. He is legion (has a short tongue)
 x chain (almost snapped) L likes to gamble. L & T used to play Patience's Delight.



U → [Second Floor landing] U/D/E, pg 261 (how he captured cats & bonded them. Shape changed to cat)

→ [Marble Hall] N ding, E bellows
 4 armed snake, Anders (butter)
 x Anders (one tooth is silver)
 - he's cold blooded (both sexes), arrows going in study.

Second Floor



e → [Ballroom] crystal chandelier, music S. (from Cherson)
 in museum's pit: x chandelier (blue lozange = Cherson's catana)

s [Musicians Pit] mess of tentacles playing instruments, mures
 Cherson is now an octopus. (no visible mouth)

x mures (horn: bat e 6 positions, value in/out, thumb ^{switch} ~~lever~~ raised/lowed) lower mated panel: pressing

(3rd feed when break lozange)

	UP		DOWN	
	L	R	L	R
1	D#	D#	D	pD
2	F		E	E
3	G		F#	F#
4	A		G#	G#
5	B	B	A#	P/A#
6	C#	pC#	C	C

p = pressing

- chandelier explodes

A# - the chord quivers slightly (SDL)

[Third Floor landing] U/D/? (most servants quartered here)

e [Servant Hall] ~~workmen~~ workmen
 Purple (ooch) - did just or exit his fort

e [Cook's Quarters] small, cat, mattress, deck of cards, rolled up paper

search mattress (cube) - do a lie

w, s [Servant Hall South] door E

[Lavatory] volume gleam (it rises, but a purple glow blocks objects + smells going up)

[Tailor's Chambers] Coronach, switches, workbench, Spring wheel, needle, Golden Rule (unweaving; need steady hand)

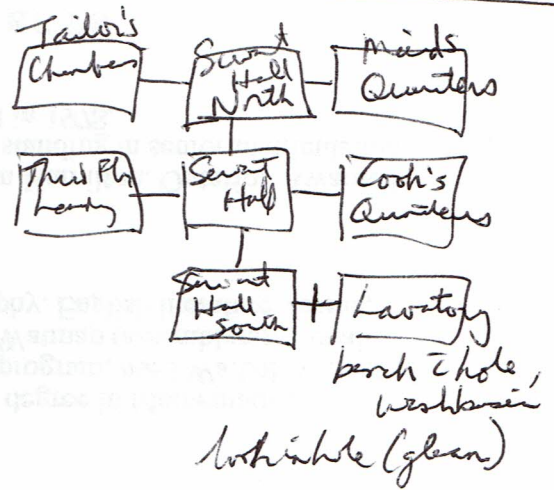
x wheel (take spindle) break spindle → C is freed! (still have it?)
 take all (needle, string, needle)

[maid's Q's] chair, bed, mattress, quilt (Kyrie), uniform

Silver tooth (dropped by Anders on Third Floor landing)

protoise shell cube (kissed by Kyrie)

In the Tank
 n ↑



monkey, s (it follows direction)
 monkey, climb tree
 monkey, take apple (brush beard)
 (monkey scampers away (where?))
 - Golden Bough, Gold Leaf, Golden Delicious Apple
 put pyrite on floor (✓)

[Fourth Floor hallway]

e [Travertine Hall North]

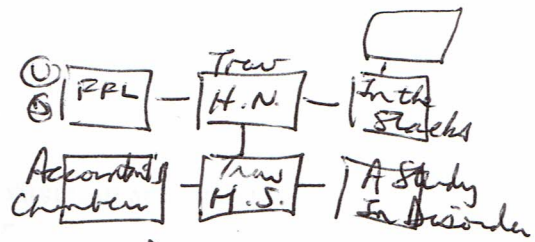
e [In the Stacks] learn 1000's riddle to N. (bookworms)

Return (librarian) "R, G." Rotifer Grouser Return III.

books, spectacles. ash keten old books, bookworms

(needs vermifuge) ~~get~~ get flesh, ~~recipe~~ "Puck may have some ingredient"

Ingredients: ~~dogon scale~~, powdered; essence of musk weasel; millipede juice; vinegar }



[Travertine Hall South] glow to W, study to E

[A Study In Disorder] desk, chair, notes, waste paper, large drawer, yellowing robe, velvet cord, pg 279, wine bottle (vinegar)

(aromatic summons Anders. SHIPWRECK)

x drawer/panel (start = ~~A~~ AOZPEMRSL)

tappe "shipwreck" on panel → {silver bell, pencil, coin collection }

Ryiel is afraid of smithy when she's freed. ^{look in it (rod of crystal)}

[Accountant's Chamber] scales, ledgers, statements, worn; impossible cube.

imp cube has 12 faces {bottle, knife, bread, rose, feather, clock, doorknob, shoe, rope, storn, gear, snowflake }

pushing a side makes it glow (on/off) - finger put on tree carving?

ask cat about recipe (y're carrying dogon scale; Puck may have weasel mask)

// enter shaft → [In the Dumbwater] floor of dumbwater above, strip of metal (silver spoon)

take spoon. g. ⇒ [Kitchen] spoon; dumbwater is wrecked. (6 + P lost) (treasure)

// pull velvet cord to summon Anders to study; meanwhile, y go to 2nd floor, N →

[Banquet Hall] table, place settings, kitchen to E, crystal jug, pg 270, sun charm illustration

break jug → Anders feet! pg 270 → cook's cetera in livery (need levitation + clearing spells)

Mrs. (regret accepting key) e → [Sewing Room] dumbwater D. entered [Dumbwater Shaft]

/// discrete chain (chandelier falls on descend) n. [Smithy] forge, bench, tools (mallet, tongs). (too heavy)

x forge. open it take legion's cetera with tongs. break it (+1) ask Tabl scouterfish.

s. take device (+1 treasure) // livery: take basin. put it in hole (crushes cetera + frees Puck)

"look under my room's floorboards" open ~~for~~ compartment {Veal Medallion, essence of musk weasel} (treasure)

[Fifth Floor Landing]

e [Vivarium] ~~tears~~ lights, foliage, creosote stump (S), molehill E, ditch, large tree

Jeremias, mulch bag, log, large stone

Therapy says "E built vivarium for Lady Dorothea"

ask catabt Dorothea - likeable. Letam would know more.

Gold mechanical gopher scampers into stump } x gopher (valuable, golden key in ramp)

log is heavy. stone is heavy e [Golden Garden] golden tree, pyrite, willow tree has golden fruit

not pyrite in pouch (stick reflex)

[Brass Menagerie] animals (clockwork): elephant, i trunk, gryphon, monkey on bench (slot in back, crescent)

put pencil in slot (is it the key?); NO, the jar of preserves works too. (x monkey: a gold key in its back turns)

[Aquarium] sea creatures in tank (glimmer in trunk, in tank)
 (goldfish, platinum fish, & deadly tangler.)

ask Letam abt Dorothea (get a book - "Wiz 5102", read it (strat illi of lion; flat red key, fables))

[Sixth Floor Landing] U/D/E, pg 288

e [Granite Hall] Cleiver.
 ask C abt caters

e [Trophy Room] fire damage (danger), excellent eyes.
 pelts, heads, essel: Golden Pleece.

[Statuary] armory to 6, guarded by 2 statues, pendant flukes danger.

faces, case, Golden calf, Seventh Seal, Diamond Dogs

read etchy: "year of the sewerger, season of the butcher; Sashay on the boardwalk, scurry to the ditch"

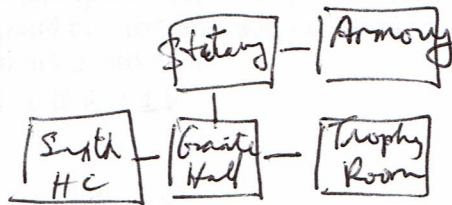
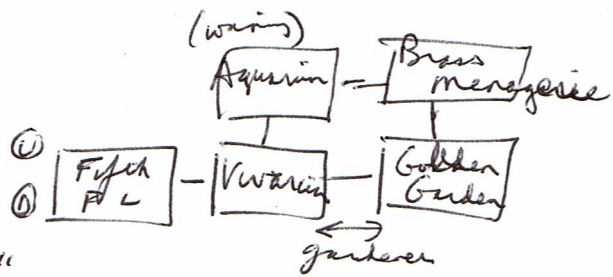
push statues, tie string to pedestals

[Armory] 3 giant rats, dragon scale mail, silvery gauntlets (take them anyway?)
 (Moose Rat, Club Rat, Hammer Rat) - if you hit them, they'll fight.

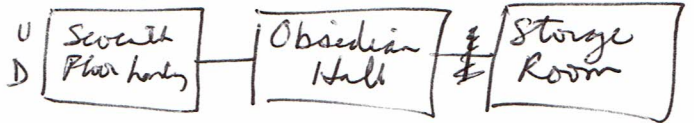
- wearing the armor lets you ignore the Drake's flames

- take eyes (left is Cleiver's caters; right is mail robot) - the fire

- take ally (forces yell Thief, but if rats gone, they shut up)



[Seventh Floor landing] U/D/E



e [Obsidian Hall] doors, lied

e [Storage Room] junk {cube table, pile of plates}, silver ring, pg 297, boxy table {metal box}

telescoping brass rod, pedestal {leg of Jobahb}

"BIRD IS THE WORD"

x table - TRIAGE MK. I - PROTOTYPE (ruby)

x ring (crystal violet (snake), leg of Jobahb)

x metal box (large headed dog dancing on top) take box. ~~ring~~ ^x ring

lidlet is in impossible cube.

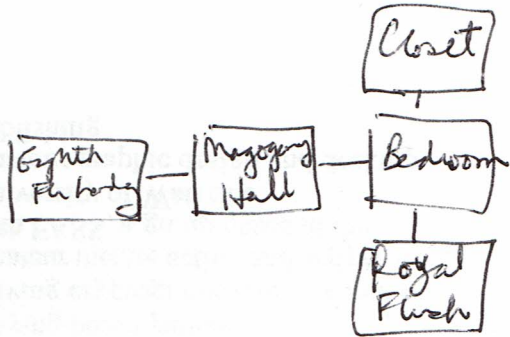
x rod (TAOS error) open/close it. search junk*

take silver ring (blue flames) open box (cylinder: yellow brick, lid's center)

Show cylinder to cat. open cylinder. take lid's. x it. break it. (released lid)

open rod. hit silver ring with rod. (treasure)

[Eighth Floor landing] U/D/E



e [Mahogony Hall]

e [Bedroom] silks, cushions, tapestries, bed, pillow
Cavatina (maid, was sculptor), nightstand

x nightstand (drawer, scratch in wall)

exhibits drawer (doesn't quite work)

search nightstand (nails)

break piggy bank (press Cavatina; she draws out DANGER on floor)

[Closet] trunk chest, robes, dresses, gowns & shoes (Dante's)

wear slippers
"check heels. g.g."

inscribed in D. imlock chest in ruby key. {ruby slippers}

[Royal Flush] tub, ping/bered, fountain {basin} {Occam's Razor}

hit pillow: sutters down everywhere -> further.

[Laboratory] auto take a scroll of teleportation, p 315, title

N [Laboratory North] vortex, workbench, ~~but notes~~, device (0:0:0), copper pyramid, tin prism, platinum sphere, silver octahedron, nickel cube, iron cylinder.

x device (toggle switch, 3 beams of light + 3 horizontal plates)

x notes (~~6~~ metals needed, distributed so that each platform holds equal weight)

Copper 5 } first plate (left)
tin 4 }
platinum 1 } second plate (center)
silver 8 }
nickel 6 } third plate (right)
iron 3 }

pull lever → all turned to gold. (device broken)
take golden Grams. (treasure)

Greenbank pelt
in chest in
Trophy Room
(was green pelt)
↳ Scorpion

S [Laboratory South] wooden crate (crystals), vortex very near.
search crystals (Therod's crystal) - ~~it's~~ falls in adjoining chamber

W [World's Edge] This crystal rolls to north of vortex; assassin!
breaks catena → [TADS-1026: wrong number of arguments to user function ""]

x assassin (Vriankha {digger, silver chain}, y drop you push
- ~~she~~ V says May Guild is too boring, employers don't want more pompous robes
- she reminds you of a Fernet (altho she doesn't work, not obscure)
- can't do anything with catena release faults, fiddle fiddle
while V is able to stop you.

enter vortex (game ends, time slows + treasures lost); peeked
throw jewel assassin (aim spoiled) - teleportation scroll stolen, robes from beginning.
push assassin (no) but she trips over Therod's into vortex; she favored right leg; crossed dropped
take Therod's crystal (the wind prevails. {Th + catena + pink head to vortex }
g. (pink head) → T feet, 9 yrs later [Epilogue] Th returns as a roge!

take packs, throw metal box at Therod's catena (it breaks)
- Heros welcome if you have treasure + get 100 rings

2 sides + 3 other stuff remain captive

Show ~~the~~ impossible cube to woman
∴ throat, head, face, tongue, eye, teeth.

Impossible cube glossed red if mother
6 faces lit throat, ~~eye~~, head
bottle, knife, bread, feather, rose
doubt, shoe, rope, gear, snowflake, teeth
Storm eye
tongue

x ds / bot / kno / rop / gear / sna
x kni / hse / ds / kno / rop / gear

what faces shrink, open,
dents take circuit,
cube goes pop!

[North Floor hallway] sphinx
 E, show down feather to sphinx (✓)

(Isabelle: soul of brass or soul of smoke,
 At the heart of the mighty oak,
 I have no start, I have no end.
 My grace, to wisdom's land I lead.)

show my Isabelle (✓)

3rd Bones of the desert with twenty-one eyes,
 If three look down, four face the skies,
 show die to sphinx (✓) { calls me a warrior, trouble follows }

N [Observatory] 9 planets telescope
 { Enagon -, Tura, +, Gea -, Nirgal +,
 Dyana -, Qarnaim -, Caelus (+),
 Nethurs -, Haidon +,

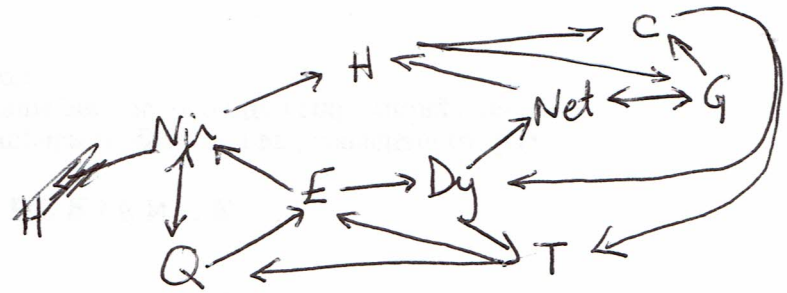
+ = glowing; - = dim

E (Brown), Tu (Green), Gea (deep blue), N (Red)
 Dy (purple), Q (black), Ca (orange)
 Net (turquoise blue), H (white)

look in telescope x lenses.
 (sphinx eye?) sphinx, faweh
 take it, break it (Sphinx feet)

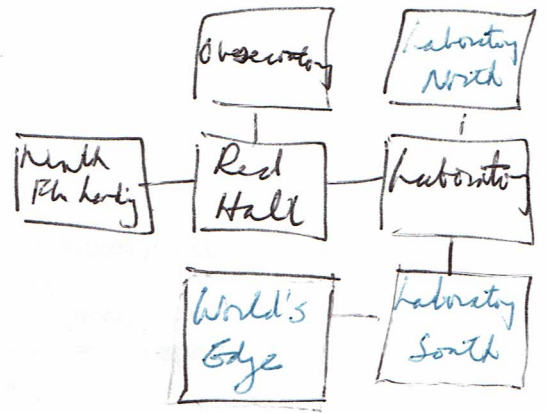
wash Arkade with catana.
 (points at floor; not downtown, street.)
 x starburst (?) The models
 are tangle (?)

- | | | | | |
|---|-----|-----------|---|----------------|
| - | E | mischief | ♂ | touch |
| + | T | beauty | ♀ | (on, Nir & Dy) |
| - | G | fertility | ♀ | (on, E & Q) |
| + | Nir | war | ♂ | (on, Net & C) |
| - | Dy | thunder | ♂ | (on, H & Q) |
| - | Q | evil | ♂ | (on, Net, T) |
| + | C | skies | ♂ | (on, E & Nir) |
| - | Net | oceans | ♂ | (on, T, Dy) |
| + | H | death | ♀ | (on, Net, G) |
| | | | | (on, G, C) |



(Nir, Dy, Net
 all hot G)

of (T) G, Nir → E (Q) G Nir → G
 Net, G, T → H, T → GCT → G Net C → all on.
 (starburst miss → cylindrical stand) - Arkade's catana, break it



put shoe in stump { gopher now in molehill }
 put log in molehill { gopher in ditch }
 put milled log in ditch { get key + gopher! }

Move by with care. Kill millipede, put goo in flask.

take cope. take eye. { folded paper, thin pony stick }
 (quill)

chunky, Scaly, bubbling, steaming
 bright blue
 very light violet
 pale violet
 very light orange
 very light blue
 dusky

small
 boots & yakchese
~~yakchese~~
 narrow possum grass
 gorrilla's amput
 whale vomit
 wet dog fur
 onions

want blue, bubbles
 small bubbling

b, pb, gorrilla
 + powder → s, bb, boots
 + mask → s, pi, boots
 + goo → b, vli, gorrilla
 + vinegar → st, pg, whale

s, bb, boots
 + powder → ch, db, possum
 + mask → ch, bi, possum
 + goo → s, pi, boots
 + vinegar → b, by, gorrilla

ch, vlv, boots
 + powder → ch, pv, possum
 + mask → ch, vlv, boots (no effect?)
 + goo → ch, vlv, boots
 + vinegar → s, vli, gorrilla

s, vli, gorrilla
 + powder → c, pi, boots
 + mask → c, vlv, boots
 + goo → s, vlv, boots
 + vinegar → b, vlb, whale

b, vlb, whale
 + powder → s, pb, gorrilla
 + mask → s, vli, gorrilla
 + goo → b, vli, gorrilla
 + vinegar → st, vlg, dog

st, vlg, dog
 + powder → b, pg, whale
 + mask → b, vlb, ~~vomit~~ whale
 + goo → st, vlb, whale
 + vinegar → -, vly, onion

st, vlb, whale
 + powder → b, pb, gorrilla
 + mask → b, vli, gorrilla
 + goo → st, vli, gorrilla
 + vinegar → -, vly, dog

powder is G, mush is V, goo is Y, vinegar is R.

Box (powder + mush) → ch, bb, boots
4 24

ch, bb, boots + goo → ch, pi, boots + vinegar → s, pb, gorilla.

(goo + ~~base~~ vinegar) → x, po, onions
0 11 0

powder

- x, br, onions
- st, ~~du~~r, dog
- b, dk r, whale
- s, dk r, whale
- ch, dk r, whale

mush

- x, br, onions
- st, bo, dog
- b, by, whale
- s, bg, gorilla
- ch, bb, boots
- ch, bi, possum
- ch, br, skunk

goo

- x, br, onions
- x, po, onions
- x, vly, onions
- x, vly, ~~dog~~
- x, vlb, whale
- x, vli, gorilla
- x, vlv, boots

get volume from letters (frequency)



8-letter
safe (powder)
matrix of letters

x letters (similar to illustration)

put illustration on letters: WRBTRHGS.

top: WRBTRHGS on safe.

{Leter's catua}

Letum head, but he doesn't have.

powder

- ch, bb, boots
 - ch, db, possum
 - ch, dk b, skunk
- (more powder doesn't help)

mush

- ch, bb, boots
- ch, bi, possum
- ch, br, skunk

goo

- ch, bb, boots
- ch, pi, boots
- ch, vlv, boots

vinegar

- ch, bb, boots
- s, bg, gorilla
- b, by, whale
- st, bo, dog
- x, br, onions

	temp	intensity	color	smell
powder	+1	+1	0	+1 sometimes
mush	+1	0	+1	+1 sometimes
goo	0	-1	+1	+1 sometimes
vinegar	-1	0	-1	-1

1st
nat/mush

see bright first
use mush to
max temp
& color.

then use
vinegar twice

(don't need goo
at all.)

ch	4	dk	4	v	6	skunk	6
s	3	du	3	i	5	possum	5
b	2			b	4	boots	4
st	1	b	2	g	3	gorilla	3
x	0	p	1	y	2	whale	2
		v	0	o	1	dog	1
				r	0	onions	0