

Search hedge

THE WEDDING

Edge of floor

in water - find ball

hedge

By Crown
Golf Club

Corner

apple tree
- shake tree for apple
cooling

Garden
Path

patch of earth
flowers

gate

Patio
back

attic window
bathroom window

Passage

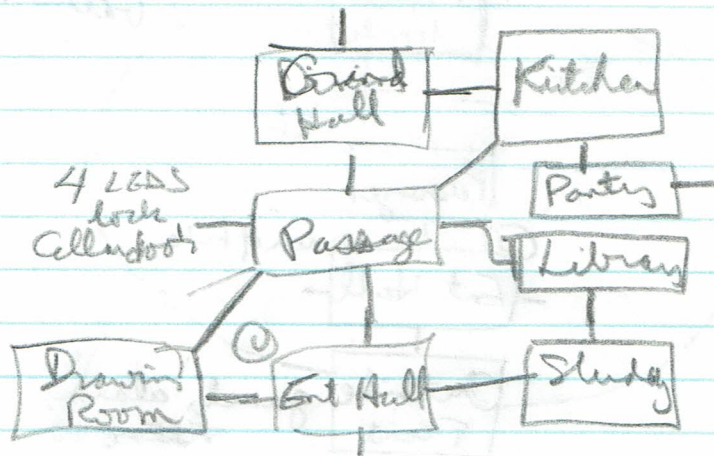
①
Exit Hall

mom of bride

Outside
Front

guard, alarm,
stair

- Throw apple at attic window (1 pt)
- Exit Hall - mom of bride, chandeliers, painting
cupboard under stairs, bell on table
(cupboard is locked)



- Passage - Scamps (dog), table
- Grand Hall - Uncle Albert & brandy, juke
- Drawing Rm - Chloe & books, fireplace, teleph, mantel, TV, VCR
- Kitchen - Chef, food
- Party - programme (hide here)
- Library - books, curtains, lamps, table, chair
- index box
- Study - Barbara (aunt of birds), wool, embroidery, shelves, painting
- Chloe's bk: "The Vampire Blood of Boynton Regis" by Floella Witt.
- Ent. cupboard has a spade.

- diamond - Barbara sez 'perfect gift for greedy idiot'
- Cheryl sez 'What a dreadful joke, den'
 - Albert sez 'Godfrey always did have an eccentric sense of humor'
 - Wilkin sez 'I don't want that!'

Scamp snuffs the dipple, core + all.

Look behind paintings in Grand Hall:

"The Angel Gabrielle" - woman \bar{c} microphone

& her ^{dark} hair covers her right eye

- tribute to ?

chef wants diamond brother dish on ^{by} brother (the guard)

- Just remind him about Dartmoor & he'll be sweet

ask guard abt Dartmoor \Rightarrow Mrs D'Arcy told him to do it! | as a bank.

dungeon - candle, stool, birds

woman in bright pink

surrounded by blue ocean

burst with red flame

& thwarted by water

Dungeon

South end hall

D Delegates

E Exhib

S Speeches

X Staff

M Media

<http://stubs.dryfig.com/cgi-bin/puc/catalogue>
 #function = play - details & Plays - uid = 803

www.puc.ca/catalog

film passage

- security guard gets out remote control
& types 5823 + door opens!
- in cellar: water detector = single button
timer

cellar

- push button on detector to find spot on ceiling
- put stool under spot, stand on stool, gap is reachable
- break gap & open hole up to...

Above the dungeon - brick floor

- surrounded by bushes, hedges, view to N

- swim (the candle goes out), exit

- lead Deborah to Malcolm. (Barbara will suggest it)

Secrets - phone 999, 646, 413

- det can be moved around the house

- shake me, laugh, play tennis/wedding/marry/marry re
write me / eat guide / talk to door / baker / swing cat

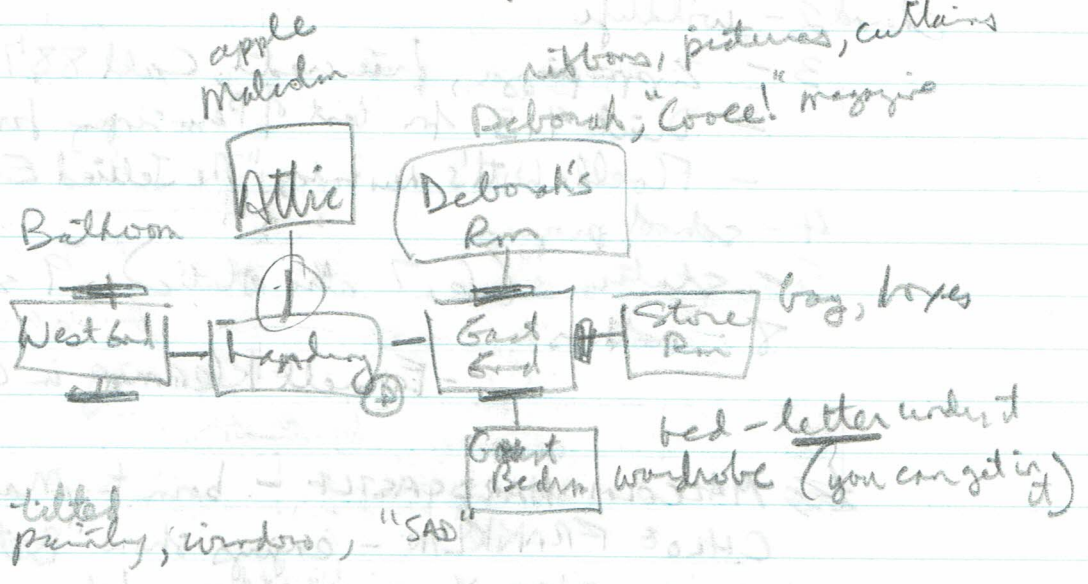
- in programme: Deborah, Malcolm, Harlequin, d'arcy,
Albert, William, Hope, Esther, Chloe, Barbara me, author, cheat

- in battlebox: dreams, timecap drive, David Faldon,
Blythe books, Scorpion, Caradeen, inner security, remember me,
Williams, repair, secret, theme, new intake, cheat

- in hints: Albert, Malcolm, Chloe, William, guard, Sheryl,
dungeon, uncle, aunt

- in index: golf, Shakespeare, bible, A3000.

open curtains to find remote.



Albert on wedding - musician. Wants to play golf later.
on golf - Sure, but garden doors are locked
on groom - don't know where he is
on bride - wonder she's ok, considered mother

Barbara on wedding - she phoned you, Malcolm & Deborah must be married today; puts key on table (funny holey at entrance)
groom/bride - they must be married today.

Deborah - on bathroom - Old Uncle William locked himself in
- on Albert - loves golf. Friend Godfrey died
on Chloe - into goth look

letter is love letter from Malcolm to Deborah

bag lets you hold more than 3 items

move boxes to find small video camera

give letter to Deborah & get note (from Malcolm??)

straighten painting to open new door to N.

cutie Malcolm, give note to Malcolm \Rightarrow note is guard's handwriting
ask guard about Malcolm.

TV - on/off; VCR - on/off, REV, PLAY, FF, STOP, EJECT

~~the~~ push <button> on VCR

- cassette (3hr tape)

LOOK UP word IN index
name programme

- 1 - Austrian soap opera
- channel 2 - wildlife
- 3 - Zippa pizza, free credit, Call 8871 now!
- Dial 413 for best of Penn singing for only £59.99
- Floella Witt's new book, "The Jellied Eel Terror of Brighton"
- 4 - school program
- 5 - states (6, 7 also states), 9 state
- 8 - nothos
- Fernell Klemming in Coocoo!! mag

~~the~~ MALCOLM HARDCASTLE - born to Marjorie & Edward 1969
CHLOE FRANKLYN - enjoys show "Battlebase"
WILLIAM D'ARCY - wife Hope, likes pizza
BARBARA - mother of Chloe, artist & sculptor
ALBERT - golfer, sociologist, brother fusses over female vices
DEBORAH - b. 1971 to Sheryl & Jerry (check cat)
SHERYL & JERRY - very rich (D'Arcy is S's maid name)
EDWARD & MARJORIE - M. presents local news on TV. Enjoy embassy & ferns

look up battlebase in index - Battlebase Episode Guide
is 2 bks out of place, coated in plastic

look up theme in guide - Betty Gospel

Say Betty Gospel to Chloe

Chloe's grand: oaf

Call 8871 on telephone (order pizza) - delivered to Partridge

Bathroom door opens as you bring pizza

~~try~~ browse key here - opens hall door

play golf - you haven't got a golf ball, have you?

dig patch & spade - locked cash tin box

put ball on course - something in model of Sphinx
(steel key)

fake diamond in box

Graham helped Deb describe ^{her} son.

ask Chloe about grand - he's related to chef

The Wedding

wed / Deb + Malcolm @ 2:30 - big paracetamol

- alarm, spend [distd putests] park 6/w, 1st hrs
ash quadrat at those people

e → [Pete] hallway window open gate N → [Garden path] NE to apple tree, back path

N → [by the Crazy Guy house] e to her, ledge N, corner W. e → [Corner] shake tree

Take window seat. throw apple at vest e. N → [Enter Hall] computer party, chocolate

upbd under stairs, hall, E, W, N, north of bride

N → [Passage] Day N, N to Kitchen, E, SW, hall S, door W, Scamp (dog) tied, table.

N → [Grand Hall] Hll, antique jigs, party, garden N, corner S, kit, Uncle Albert

E → [Kitchen] exit SW, party S, chef, still, meal. S → [Party] N, torches E, programme

look up X in programme. (can hide in party to hide from guard)

Deborah D'Arcy (Sheryl + Jerry: parents) Malcolm Harcourt (Edward + Margaret: parents)

ash Albert dit golf (don't to guards as locked) (bag)
SW of Passage → [Drawing Room] Chloe, fireplace, phone, TV, video recorder, E, NE

Chloe Franklin (corner to bride, gate, sofa, 'Battlebone') (REC (REW, PLAY, FF, STOP, EJECT) on VIDEO RECORD)

X book ('The Vampire Book of Bogner Rejus' by Floella Witt)

e of Gate → [Study] Barbara (aunt of bride, mount ash, artist, shelves, furniture, cindy, embroidery, pouffe, wool, W, N, anchor. (Barbara called you, gives you a key from kitchen [it's essential])

N of Study → [Library] S, W, books, cushions, candles, oak table, throne chair. index (look up titles individually)

look up battlebone in index. read guide. look up New Table in guide (Kernox, Ciccone + Estefan)

W of Passage (cellar) electronic books. AIS: Repairs (John Curran)

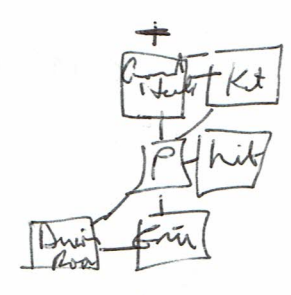
U from back Hall → [kitchen] party, window. turn party (secret door N.) N → [Spacious attic] Malcolm (board), apple, boxes.

(3 items not listed!) e of kitchen → [out and] N to Deb, E, S. N → [Ash's bed] framed pics of actresses, ribbons, bed, Ash (Cocoe! magazine)

E of Gate bed → [Store room] plastic ~~store~~ bag (over sack), boxes

S of Gate bed → [Guest bed] 1kg, wardrobe, bed. look under bed (love letter from M to D)

[West end] window N, bath N, door S. (locked)
under table in kitchen
"big laws Pity, '13"
"Chloe way be '91"
look up golf in index



unlock cupboard & key. open cupboard. take spade.

- show letters Deborah → get note ("I can't go there with it")

- show note to Malcolm. (It's the guard's handwriting) CFS

- ask ~~guard~~ guard about note (+1) Edge things on him

- ask Albert about Sheryl - Godfrey left house to her.
Godfrey - eccentric

- ask Sheryl about kitchen (Ben William looked in there) wife Hope

- Hope is a part-time rock climber

- ask door about lock ("The number is 9136") type 9136 - guard is Fred, he changes lock (press # on remote)

- open curtains @ Det's bedroom → take remote.

(channel 8 seems to be the ~~VCR~~ channel)

6787 pizza ad on channel 3.

The Jellied Gel Terror of Brighton
bronz key in Bathroom

pizza delivered to party.
search hedge. N → [edge of a first-floor room]
overgrown field of grass & weeds.
search river. take ball. take steel key. unlock open box.
take diamond (+1)

put ball on cone. play golf. (+1)

Ed identifies something from sphere

CP9 (4693)

he's related to the chef.

ask chef about guard (+1)

ask chef about guard. (after trying to give diamond to chef. ask chef about guard. (Dartmoor)

ask guard about Dartmoor (+1: Sheryl ordered guard to)

A gloomy dungeon (door to SV, candle, stool, ceiling steps)

put stool under pit.

Swim (+1)

lead debt to Malcolm (Kassia, hedge, door)

ppm install CMS! = MediaWiki

mds say
get 7-rip
to handle weird
formats.