

Worlds Apart - Dictionary of Terms

Areilya - the sun
 Azaera - a Melasian meditant of Lashiaran's House.
 Celestial Sea -
 chervak - animal
 ch'nuka - nut bearing tree
 dreamdrawing - illusion making in an inner world
 Dyr - the planet. Known regions: Iavos, Melas.
 Dyрана - the amphibious land people of Dyr.
 Emperor - the Exorian Emperor is called the Sheiara.
 Exorians - alien race. See Emperor, Sheiara, T'Arra.
 Firstborn - first people to leave the ocean for the horizon
 flaeear - a fire demon. Can be defeated by Siphyrian knight's star.
 hasidja - Dyrana caste that can sense/feel things that others can't,
 means "faithful one"
 House -
 Houselord - the head of a House, eg: Lashiaran.
 Iana - Yuri's mate.
 Iavos - region (island?) of Dyr. [where you are] *Yavosian*
 jakwa - bush from Sheyr with poisonous purple berries
 jinna - tree of beauty
 kalla - plant whose leaves have curative properties.
 Kitara - Lyesh's mother.
 kusha- ???- type of tree
 Lashiaran - a Houselord; his mark is the tsasanga.
 Liande (or "Lia") - Yuri's daughter
 Lysha - Kitara's mate (and probably Lyesh's father).
 Lyesh - young female mind-healer (the PC). Mother is Kitara.
 Meddler - mentioned by guard in cracked crystal imager
 meditant -
 Melas - region (island?) of Dyr.
 Melasian -
 Mentality -
 pakal - koala-like animal (*pl: pakalti*)
 Queen - the Houses have a Queen
 Sheiara - name or title of the Exorian Emperor.
 Sheyr - the planet that jakwa bush is native to.
 shylyf (*pl: shyilverine*) - an aquatic people
 Siphyrian knight - enemy of the flaeear.
 Siphyrum (or Siphyram?) - horizon?? land??
 T'Arra - Exorian ship that Yuri visited
 talamyr - a shade tree.
 tamba - membrane of a hasidja
 tsasanga - bird of authority; mark of Lashiaran's House
 veil - an illusion used to mask a person's true face.
 Yuri - a male jester of Lashiaran's House. Mate: Iana. Daughter: Liande. *Yurasta*

Korvali / Korvald - people / land

Kej

Chayle

Goen - liaison 2 Southern Houses

shyilverine

shulien touch

kusha

Nepen the

Sixth Age

Dalhat

Martian

shield (planetary)

Surrender

wavetouch

mali ("den"?)

chi- (child)

- strand of ^{sunlit} hair on surface

storybook { Ocean & Sun were in love. Anelya created a thread of light,
& Firstborn swam out of Ocean

2nd pg: [lovermaid/Firstborn] Ocean fed the Firstborn \bar{c} fish

3rd pg: [hazyon] Firstborn had been everywhere in Ocean but where sky meets water.

4th pg [shyly & girl] Ocean afraid. Pb agreed to leave new children behind

They went into a thread of sunlight & their children swam out \bar{c} then.

5th pg [human boy swims alone] Half children born lame, poor swimmers who
longed for the Sun. Stayed close to surface, but unhappy

6th pg [island \bar{c} forest & haze] other children ~~wove~~ wove hair into land above water
so the lame could see Sun & be happy.

7th pg [celestial Sea] The Pb did not weave. They swam to where water meets sky
& never returned.

touch generator - conturb { coverage died, intensity died }
clockwise arrow Q, 6

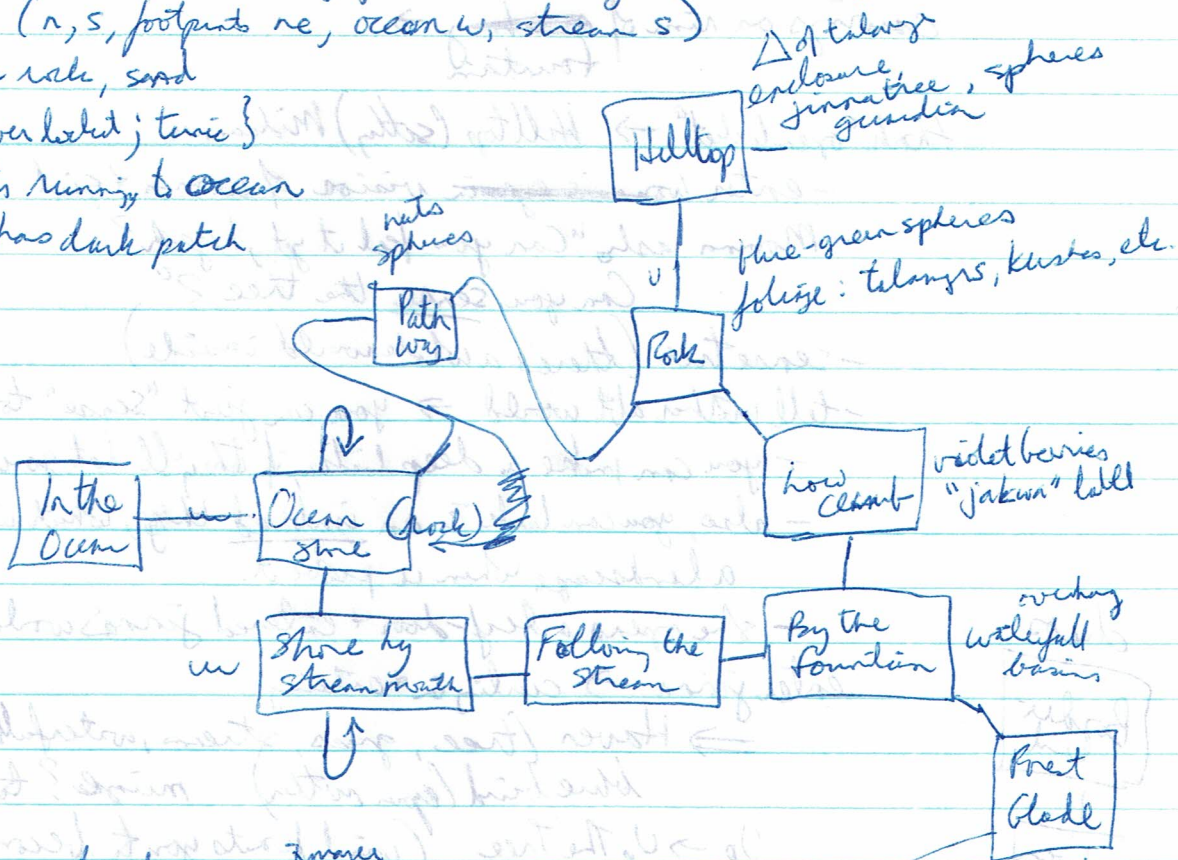
Ocean Floor → Ocean Shore (lying down) i {silver locked} ^{mind-}
↳ operable? mentally?
- on chain
- jinn's sapling on outside

- can't stand; child's voice calls; figure in black approaches
- Death? in form Dyrana

stand. think "open locked"

Dawn, day 1; Ocean shore (lying down). Arcilya is low on horizon
Ocean shore (n, s, footprints ne, ocean w, stream s)

- large rock, sand
i {silver locked; tonic}
footprints running to ocean
rock has dark patch



- ch'auka leaves (under jinn's)
- fallen leaves (glint → round crystal) features
- vine leaves (again → thin cord)
- foliage

- pakal under jakwa bush
- make c fur, long tail
- berries cause vomiting

fountain - reflection
 black waterfall (c stone)
 z. x reflection

Up the tree

Arcilya is Dyr's sun

think "open book" → see small jinn, shelter, 2 figures

one a ^{old} woman, one a child

- vision of white basin

x reflection → eyes of woman - sadness & mystery

g → skin silver/gold i tamba membrane

gills; eyes blink only at will

- features of a hasidja

- no mark of ownership, but a wound on your forehead

crowns on rim of ~~opening~~ → fountain

think "open book" → Helltop (sothy) Midsunna

- enter ~~woman's~~ vision of woman + girl

- Momna asks "Can you feel it yet, hejesh?"

Can you sense the tree?"

- sense tree (there's a whole world inside)

- tell mother abt world → you can just "sense" too, without a focus

- you can make a deep link, if they'll let you (mind healing)

- also, you can link i an imbred thing, which will open up into a landscape when u probe it.

- she opens a leaf-door & entered jinn's world (u are to follow)

enter jinn → curling in + entering

⇒ Haven (tree, grass, streams, waterfall)

blue bird (open mother) mink? to north

Up → Up The Tree (wind wants you to become a bird too)

become bird (not "veil-wearing")

mother becomes human & draws image or dream drawing

- illusions in inner worlds have more truth; they transform reality

- door & spire appear briefly

chaos

Borderland

Haven

Haven

Waterfall has light + voice → echoes thoughts back to you
spite taps mother on ankle

spite → mischief, someone hiding behind it?

spite has sign "Wake up, Kitara!"

tell mother abt sign (you can imagine creation?)

man's voice → I'm not letting you off THAT easy!

sense tree → feel white fire in mid

spite is distracted by singing (specks)

Within Chaos

bellomebird, fly, take spite, d, show spite to mother

sign "Greetings, a dreadful friend! You are wanted outside."

- puts silver chain + translucent sphere on hyesk. (locked)

"Try opening it, hyesk - but intend it open"

- you see young woman in it (mother?)

- lockset is a msg-bearer, like spite, linked to your mind.
you or others may leave msgs for you.

- she thinks you saw the tree inside.

- lockset exists on all levels

- she enters tree, spite follows (portal in mid-air)

enter portal

→ Hilltop (however, Yuri)

↑ room for 2

- "Azaera sends his love and wayfinders. Yours is maroon + spokes.

- odd of master Fashiaron to let Yuri come instead of Azaera.

- sense Yuri → his mind is cloudy -?-

- Yuri plays + messes in people's minds.

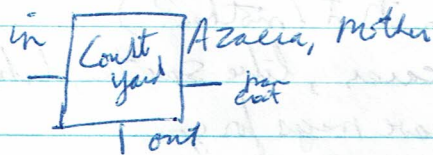
- Kitara sez that The House is worse for hyesk than this isolation -

K will never submit to a House + Households

- bubble of illusion of 2 figures: flaeer and a Siphirian knight
(flame) — ^{back of gold} (white light)

- walking together like best friends
by Celestial Sea.

- 89
- "Knight is supposed to quench flames by throwing his star at it"
 - Yuri is short for Yurasta (Y & Blue jester)
 - house mark of hasidja, Lashiaran's seal on his neck.
 - mark is also sown onto much of his clothing, a violet + sasanga (bird of authority)
 - S → Ghedow Forest
 - W → Crossroads (wayfinder spoke he has extended)
 - Spin wayfinder (in points d + sw)
 - sw → Forest Path (W, or back re, unseen hand on shoulder)
 - W → shadowy figure "It's time to go back"
 - wayfinder + locket fall to ground + vanish!
 - Courtyard (Early Spring)



Azacia is pure Melasian & a meditant (ascetic), elder mind healer
 Mother's crest has been removed

Knapsack (stuffed full, nothing on interest on top)

A: " 'Hasidja' means 'faithful one', not 'slave'"
 ocean [outside | Celestial Sea | quicksilver sea]?

Lashiaran apper. Melasian ē tsasanga veil

- we will be in exile

- A puts bound scroll & package in knapsack (they disappear from view)

- search bag ⇒ Hilltop (sitting) Morning, day 1.

figure is less substantial, jinna tree gains light

enter jinn → Darkened Haven (foam, frozen waterfall)
 - take flakes
 Darkened Borderland (moon)
 touch moon!
 - (need chaos in Haven to dream draw)

open lock → Haven jinn results in light wind.
 Flakes of white light are shaken out of its branches
 take moon!

lowe

Distress song in ocean, tugging sensation by stem
sense voice - frustration, confusion, loneliness
 follow voice (on Ocean Floor)

- source of hearing below (shyff)
- touch floor (feel elongated cage, 10' x 5' x 5')
- cut lake cage

shyff voice, u
 (leave you in silence)

enter shyff
 → within the web.

open lock → 5 bells ringing, 1 is in center
 Then 4 are put in corners & silenced.
 5th is only one you hear

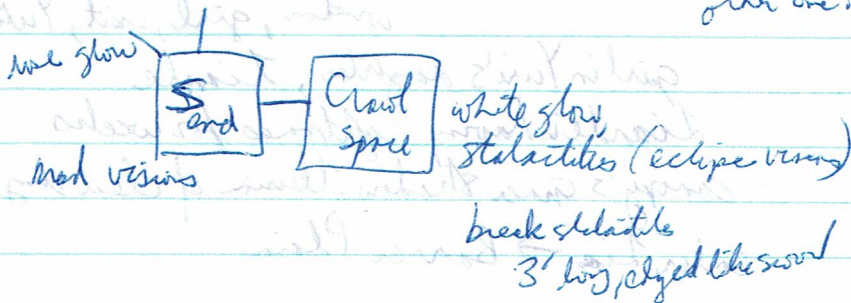
reach in cage

follow song
 → out in the Ocean

Sense images → doorway leading into prison

Enter images → Crystal Cavern, South End

White bird pinned
 by silken ties



ask guards about northward
 other one?

Sense
 - not strong where

- guards block N passage

Within the Web

- fibers pulsating, node is fast anchor
- sing (calm - melancholy)
- shelly is now calmed (not forlorn, but panicked)

Out in the Ocean

- flash of silver, loud splash = (Midday, day 1)

Sense curvings (of fountain) — a hand of water!
turnout is hard to rest

Sense tree (in Forest blade) feeling of affection

hit guards = spike x 3

ask guard about rose

- It is her you want to see then? Her only? > yes.

- give sword to captain

N → Passage (escort to NW passage)

Se to go back, hole in ceiling, u

jump → Crystal Cove (small shallow rock, dark)

darkness is imbued?

talk to rock (tall (top) (low), talk off)

take shards (of broken spikes)

→ see child in dollhouse

enter child → Bedroom

(bed, canopy, toys, illusions,
window, girl, exit, Yuri)

girl in Yuri's daughter, Liande

Liande is having nightmares for weeks

- canopy's inner shadow illusion of clear sky.

enter Lia → Barren Plain

Barren Plain

- circle of flame around girl, a flaear
- think "open lock" $\left\{ \begin{array}{l} 1) \text{ shyly in captivity, feel fear} \\ 2) \text{ shyly adult, teased, released} \\ 3) \text{ shyly near dead on deserted shore} \end{array} \right.$

- bushes, bramble

- Yuri's fear might be feeling ~~his~~ her fear.

- Become knight (hold white star-shaped cluster)

left starts flesh

- throw star to her (she catches it)

- her, throw star at flaear

(auto leave her's dream) → Bedroom

Bedroom - explain that she had to learn to confront fears herself (over-protected)

- Yuri gives you crystal sphere on multicolored cord.

(cousin of his made it, holds everything, has quite a bit of Yuri in it)

- ~~mother~~ mother hopes mother is recovering; Loshia overheard.

Back to Crystal Cove - escort is breaking up like static.

"You tricked us." It wasn't just her. You're trying to remember."

"You see what's happening to us, But remember, you couldn't even have gotten up here without my help. I hope you know what you're doing"

"If only we could have gotten into that cursed locked --"

"Or kept out the meddler --"

Hilltop (Afternoon, day 1) clouds, jinna glows, guardian rare insubstantial

Up the Tree → one leaf has soft rose glow!

look under leaf → will-o-wisp

sense will-o-wisp → image of forest path by stream

enter will-o-wisp

- see you + Yuri in Forest Blade
- he climbs tree + throws nuts at you (take nut)
- wearing locket, tunic, imager.
- ask Y abt Y → he's been on a spaceship!
- ask Y abt spaceship → Exorian, Emperor requested Y's s/w
ship called T'Arra
- ask Y abt emperor → The Sheiana takes what he wants, + eyed hia.
It was like a cheetah eyeing prey.
Glad + Mother left before the surrender... in a way.
- ask Y abt surrender → households + Queen bowed to alien Emperor.
You can still find his seal in the main plaza.
- ask Y abt Queen → no idea what she is like under her veil
- ask Y abt hia → his mate is dead; hia needs another.
Kitara is one of few people hia trusts.
She reminds me of ^{dad} stories: How the Firstborn kept begging the Ocean
to tell them the way to the Siphylum. "Don't ask me!"
"Ask Meilya". Meilya told them the secret + swam away
- he left out the part of the story - how they got to the Celestial Sea,
the Ocean felt them there. Because he was part of it.
- ask Yuri abt firstborn → always loved those old tales
- ask Yuri abt imager → When I am away, + Kita -- "I hope... it keeps you company"
- Yuri leaves handful of will-o-wisps in tree.
- ask Yuri abt w-o-w → points at me, "That one is my daughter"
- ask Y abt ch'nuka → it makes a wonderful perch
t'arra: nothing like flying in a hovercraft. like a crazy dream.
yuri's mate: Iana; sort of waiting for Iana to come back.
mother's mate: Lysha; I think he disliked me
kitara: (not a topic you want to dwell on right now)
alien: master doesn't usually let me intermit i n but had no choice.
master: down.

ask/abt ..

house: lesser court Ketara, ne, or Azaera

azaera: (averts his eyes)

outside ocean: master forbids him to swim when he visits you.

celestial sea: loved those old tales

quackhouser: (shuy)

veil general: (shuy)

quantim: (shuy)

tsasangavid: (shuy)

sun: tales of Sun & Sea. If woman is Sun, and man is Sea,

why do you love to swim, & I love to fly?

however: first way to travel

bark: (shuy)

jakwa (shuy)

emperor's eyes: they don't literally burn, but they have real fire in them

chervale: (shuy)

my eyes (shuy)

me: why don't you come & join me?

- do you think your mother will recover soon? (She's sick)

U: Up in the Tree (Yuri, will-o-wisps)

Sense Yuri - only starting to realize how serious K's illness is.

Sense w-o-wis - Sense of mischief & warm kindness.

think "open book" → young jinna, you & mother sing to it, & voices merge

- Yuri mentioned psychic healing, how it takes energy out of you - is that what is wrong w/ K?

You say no; there's something inside of her; she needs science to cure it.

Science (not word)

- Y mentions how we (hasidja) are protected & shouldn't be. But maybe some need the protection. "All who understand mind, who know our caste, they say the psychic walls everyone else takes for granted - we don't have them."

Maybe we're fragile? You disagree, we merely feel things others don't.

- children (you don't know abt that)

caste (general): ^{ma} hasidja man "certain things we're not supposed to say.

hasidja caste)

mat: not feeling playful any longer

- Y doesn't want to lose you. No Dyrana was meant to ~~be~~ live like this. Thinks of shylweine
Yuri promises to be your friend → Early Evening Day 1

raindrops fall Gaudin is too insubstantial to block you

Inside the Shelter thick web (spiders?) - ^{search} - abounds it

- metal storage cabinet c compartments (3)
- fireplace + kindling
- silver disc (1' across) - head impression, put glow (a generator)
- knapsack (open + empty)

1st compartment - blue flask, strainer, steel bowl, copper bowl

2nd compartment - shylf figurine in water globe, toys

↳ actually shylf/hann mix

thin platform by fireplace } device: lighter (flint + steel) }

3rd compartment - books + papers

search it: notebook, folded letter, small storybook

letter (from Azara to Kitara; A calls K justborn)

notebook: Flora + Fauna of Iavos <look up topic>

look up v in notebook

kalla leaves: curative when crushed + steeped in boiling water.

A liquid antidote if swallowed, or poultice for open wounds

papal: eats nuts + berries; nests in treetops

jinna: white berries in spring; emblem of beauty; aversion to civilization

needs warm humid climate near shore; cant abide harsh winter

need fertile ground, space + peace.

shylf/shylweine: protect c them. feed c them. catch food from school.

talamyr: one of eldest trees, perfect shelter tree

(mention of "mentality") (mention of generator)

"Am I just being superstitious? It seems like the sickness --"

jukwa: from Sheyr, poisonous, kalla leaves are antidote

ch'nuka: found in Iavos + southern Melas. Nuts are edible.

To kneel under one is to feel comforted. (Old man of the forest)

maybe it has soul of Azara, hanger heals. No.

send toys → wayfinder

enter globe → Shy, inside the hovercraft (no hood) "Early Summer"

a. Korwali man is steering. Lashiaran, Kitara, Yuri also here.

↳ his name: KeF (rugged) *rosky shadise*

Kitara cold, vulnerable; Yuri worried

Korwald (Lond), not many hasitja come here. Yuri's nephew was brought here.

- "emergency brings us here"

ask KeF re Korwald: should stay awhile, after done shelter

Kitara unresponsive

→ Outside Main Bldg nw: pits, s: storage bldg (block)

↳ rotatory doors
Korwali women

mother collapses. L tells Y to go inside + find his nephew.

L tells Korwali that K is houseless + is not entitled to medical treatment.

L agrees to let K be indoors

L tells you that job is yours. You not.

L tells you that Y will be forbidden to see you after today.

L gives you option to leave or help him now.

Observation Chamber tank on west wall, water filled, steel mesh top, ladder to top
doors: N, E

Yuri, woman, man, Lashiaran

"feral" boy in tank, woman is Chayle + gives you a booklet

Chayle is chief anthropologist at shelter.

booklet: "The Kerepan Bay Feral Shelter"

(d a hasitja greeting:
- *muve am along frean*)

read about <topic> or consult guidebook

man is boen (job is to make things run smoothly)

cor sult [guidebook (help off)]

* Welcome - to Kerepan Bay Feral Shelter, largest on land, open to all.

* About Ferals - newborns lack tania & sufficient lungs; must be immersed all of 1st month
Origins - premature births tend to not develop land adaptations 1st month
Physical Features - keep tails & lose legs, angled heads. Need massive surgery to live on land. Some brains develop normally. Ferals are always premature.

Social Behaviors
Most are atavistic mentally & physically.

* Aft the Shelter

Naturalist/Adaptist Debate: Our Philosophy

Location ; Organization

Staff

Ecosystem Control

Adaptation Process

Climate Considerations

Tracking & Monitoring

Medical & Psych Care

Social Structure ; Coste Considerations

Reproduction

Visitation

Mental - instinct dominates, but unlike mental retardation. Thive \bar{c} other ferals.

- primitive telepathy \bar{c} other ferals, esp between clones (telep or touch)

- don't use voice; don't exchange mental flesh like shylverine; empathic

Behavior - clans of 5-30; young taken in by elder

- meditations describe mental links like current flowing in closed circle.

- use indirect touch. very sensitive esp underside

shulien touch (or wave touch)

- feel little for humans; they don't return a parent's love.

Philosophy - ~~should be~~ adaptation vs. naturalism \equiv integrate \equiv humans \equiv released to wild (neither extreme works)

- extreme adaptation \rightarrow mechanics needed, act as 2-yr olds.
- milder adaptation \rightarrow leave child's form + water, but \in family close by.
tend to be in isolated artificial environments

- pure naturalism \rightarrow failure to survive; they don't have skills;
also isolated from other ferals

- guarded naturalism \rightarrow freedom limited to bay, safer, allows close, no predators

Location - land near bay is inhospitable, but water has rich fish + plants,
few predators or poisonous flora

- still in underground bases. Main bldg in valley of west coast,
to east of Gorian cleft.

~~Staff~~ Staff - formal commune

Ecosystem - behavior modification used to force ferals to avoid dangerous species

Adaptation - med exam, tagging, water temp, ferals averse to closed environ.

Climate - more vulnerable to cold, but acclimate. (must be 5 C or below)

Tracking - collar prevents them leaving the bay (reps migratory impulse)

Care - collar monitors health

Structure - casteless; human castes are unnatural for ferals.

Reproduction - children of ferals are also feral; males sterilized every 5 yrs.

Visitation - open to all Dyrana, allied + friendly races, + wartime races
in good standing within the Herein League or Oktorian Alliance.

- arrangements can be made for ferals to travel out if you can't travel in.

ask Chayle about Chayle - native anthropologist; looks for links between cultures
eg: feral to human.

indirect, shy/worsey, bite, flash, ~~explath~~, touch
(left)

wavetouch bay ✓
sing ✓ sense bay ✓ enter bay ✓

- fear of tanks, fear of other noise, fear of me, web

Yachs C abt feral (= Tarlyn, Y's nephew) [Yuri's full name: Yurosta]
rare emotional link between ~~Father~~ Tarlyn + Yuri

he is letting you stay for T's sake alone.

C hopes that Y's bond will help you + K figure out where to start.

Y says T's mind is a blur! Feel more when T sleeps. Why is he swimming like that?

C says it's not just T. C motions all (you, L, Y, G) into north room

n: Tracking fm view screen + map + dots; control panel
(keyboards, etc. etc.)
dots: hard to see pattern from this scale.

Sense Goen: no telepathic blocks at all

- well trained mind otherwise; aware of how close L is to calling it all off.

- has a feral son of his own

C says: every feral is behaving abnormally; started months ago.

- last few weeks dramatically worse; cyclic quality; no real rest.

- no physical cause that they can find; mentally they're too alien.

sense Chayle - self-control. Bright-red anger looks still.

sense Tarlyn - tangled buzzing; true mind underneath jaggled + dizzy

x Tarlyn - silver bond on neck; eyes glazed.

Sense band - X

think "open lock" - young female meditant, vital, talks to crowd who don't understand!

d → Bottom of Tark, wave touch tarlyn ⇒ he calms

~~"Point 6" chapter 29, 118, sectors 1, 863, 763 = 1, 863, 826, offset 10, 866~~

turn wayfinder. se → Forest Nook - statue of man, kneeling
- readings don't touch it.

sense statue - loneliness + loss.

enter statue → Forest Nook Winter (out to now)

- mother is imbuing a shadow (expr of raw pain)
- parchment in wind - rain

x shadow, Ameer's features, your memories in it.

K: "Why? Why did it have to be so broken?"

parchment: "On the 4th day of Dalhat a massive Mantian force pumiled on planet's shield & launched an attack on the royal House. [ii]

The Sheikra's protection spared our queen [iii] A Zaera was visiting the court on that day & is among the fallen. In respect to his final wishes, we send you this notification & the possessions he willed to you."

- House's seal & the scribe

- A was once your master (pleasant + bitter memories)

i { locked, turn, vinger, parchment }

open locked → voices of Kitara & Azaera

K, are you ready to parent again? No. When it's been 10 yrs now.

At 38 yrs old, you should have given me more than one child by now.

(Sblene) MY DAUGHTER DOES NOT BELONG TO YOU!

(A can't argue, but hurt + a loss) A asks if he's ever raised his voice to K.

No. Then how much less should you do this to me. [Burstard] (bair, knit)

exit → Sunset, day 1

x statue "And if at the touch of my hand there is true repentance,
then Neperthe also finds me. On her wings I fly away;
in her wind my body scatters."

1250-1377 in the Sixth Age

you

read abt kusha : grows only in ^{mainline} ~~mainline~~ delta of Iavos shochie.

In spring, collect white buds, & their scent will warm you
through the winter rains

Within the Web

- node, thick fiber (pattern of lights draws it out)
- follow fiber → source node in star of fibers
feeling of keen awareness
- listen to node (foreign tongue) keen equation-like intelligence
- touch node (blip, silent, resumes, then falls dormant)
- touch node (now stand)
- become node ⇒ Joined to the Web
- core of mind (someone nukes it stop it keeps echoing phrase)

>hello

Yes, I hear you.

Who are you? You were Outside. No one has ever been Outside

>lyesh

I am lyesh. Yes, I was Outside.

Echo! I am Echo! I've waited a thousand tides for you!

→ In the Ocean ē female feel ē human eyes.

she is wide awake & bustling ē questions

"I've waited so long for someone to answer me." (she projects a sort of mental sonar)

is this a ~~the~~ Echo's Haven?

- Outside, where the Unfeeling is, produces & put us alone in the oceans.

> tell echo abt tarlyn . she agrees to stop (as if pronouncing death sentence)

> tell echo abt pathorn X shylorice X yuni X ocean X celestial sea X

> tell echo abt feel ⇒ Cliffside Early Summer, not Iavos

Kitara sits on promontory

N: bay, e: civility; sw: footpath
feel hysie in voice

> sense hysie

possible that hysie is boea's granddaughter (son's daughter)

Tozi is most likely hysie's father.

yuni hi → C gives globe to you.

- ask chyle about cacos (we were stolen from here)
- ask chyle about globe (artisan had something to do w/ hygie?)
(Who gave birth to hygie?)
- show globe to mother (not unborn, but not made by machine)

Dusk, day 1 sense kindly (unselling globe)

Sleep on shore - ? - A moment, or hours or days, the eye winks open.

- roaring sound

sense sound → storm?

open eye → Part I: Visitation (midnight)

sense eels in Underwater

- grant fern-leaf trees

(Blade of light as if stem, figure cures)

ask guard abt needles (he says he trusts i him almost every night - cursed wip -)
" question (Our lord has his own part to attend)

Ekot (planet) - mostly jungle

Kowaki sometimes have flecked hair

red & black haired alien in sleep capsule

By Fountain - now fountain is centered, filled w/ molten red liquid,
flame like candle w/ human features.

Alien boy draws liquid into a silver bowl; he is in flames

combined world (c boy) boy is Saal

we are linked? He gives you a space my own kind cant provide

One of his own children walks path mirror to mine. He will fall

unless he receives something from me

- fountain: link between Saal + me. Primary. Cannot drink directly
- flame-sprite: Janhava, named Takeena
one small people - Saal's vision like gods to them, humans like angels & demons
- Feynman - Saal sets things alight
- Kitara - Saal has not crossed her path, but she is stubborn + wise + foolhardy
- Dye - fought with Saal; he's walked on both sides
- guardian - he's replenished him, & stretched trees to protect him from moon.
To enter shelter, I'll need to find a weapon
- shelter - Saal wants to meet you there
- Saal - one of Nariath Brothers: fire, kindness + Assinchi (spirits of masquerade, negation, black) + fangs/blood.
- inner fire - what drove us out of fold
- his child (of blood or of spirit? has 2 of former, may of latter.
Son he spoke of is child of spirit, boys for 2 worlds as Teri does
- Teri - he + his have called Saal (tuggeen) + neither has him no fear will stop him
- his - feels same as you do, to father - when time is right
- L - can be taught, but by Anna is it slow! Recall guardian's agents
- how many of his faces can you see in them?
- agents - in images, agents of Guardian + part of you, from your memories.
And there will be more agents as long as you give Gr the power.
- images - join Saal there inside
- will-o-wisp - join Saal in tree
- forehead - that wound won't be the last
- Az - closest they to a father's hand.
- slavery - spawner of disease

ask Saal

- star - 2 edged weapon. illuminate both beautiful & ugly.
 - don't use it as weapon vs. life
- fear - only good of it is it can be manipulated for a greater good, sometimes -
- Naveth - Elders of fire. Saal is bit a chill, wayward; grand & shining on other side
- other side - walk in body of flesh by day; want to hide in dirt, but the time hid on high.
- stature - join Saal there -
- shilly - you know as much
- Haven - did best to leave jinn tree untouched
- Lysha - died before I was born to Mantians scourge
- Mantians - cosmic impotence is nil; worst evils are inside
- quicksilver - Forgetful Sea; Saal stole the air from it.
- firstborn - legend is a window into reality I don't get understand
 - humans aligned Enyeri; Saal's children call Enyeri Ushragh [the cowardly hat]
- Enyeri - opposite & complement to Naveth.
- Assirchi - sturge & confounding by doing sturge opposites
- Ana - Saal's Queen & his first love
- love - you don't need me to tell you of that
- Saal's father - scares humans when face to face
- Queen - more gen mind, but delegates to tier of hoshievan types
- Mentality - chaos from Melasians, no personalized god, a greatly Unity.
 - Saal's people whisper of a time called hibernation
 - wrong to think no personal intelligence outside of the flesh.

Exor - name of Saal's homeworld.

T'Ana - Saal's home is Exorian starship T'Ana

Sheira - ^{Saaly} Emperor on other side.

dreamdrawing - ready creation of a window. She windowd one of Enyeri

surrender - Saal's eyes glitter with amusement. Earthly life is cosmic waste.

All leads to light, so we don't take it so seriously

light - many kinds, shadow. Only true darkness is Void

shadow - an illusory darkness. When cast from powerful source, it is black light

See me in Yui's tree.

void - true aim of Guardian, to swallow you whole.

Treetop will-o-wisps, see ocean, Saal playing pipe, Takeena
"Jainé"

Jainé Saal → **Within the Music** unseen hand

listen, music speaks to you.

idea: mother choose to live as hermit instead of slavery.

May be a 3rd option

Open lock → Celestial sea, Saal chases after Shinga, his father.

women's voice from cloud: Assinchi act wasted/mad.

ask a pipe - music of negation

my music - songs of healing

will-o-wisps - what'd call imbued realities, Saal calls soul-spawn

Crystal Cavern S, end **Nend** Saal, shards ^{claw} (shards come out!)
proceed

give shards to saal @ tree → meet me at fountain (⇒ spike is back!)

Forest Nook statue is gold where moonlight touches it; Saal in leaves

Nepenthe - goddess of forgetful ness.

statue - note his light + Saal's light creates fusion

hesidja - polarity is a handicap

meditant - veils + illusions are reshaping spirits; it is real.

Out in Ocean - flying serpent (red & black)

Serpent - a Gazer, a phoenix dragon, rebirths in moon.

- did predator aspect disturb you? predator is not always an enemy.

eels - nak'hari, from Goat, don't live in oceans though.

Inside Shelter fire, web, Soal, Takeera "Come join me" [at fireplace]

- re web: banish Guerdin, banish web

join soal - fire shakes hopes & restlessness.

fireplace - fountain + fireplace are bridges. A sister Assirchi is helping.
past is done, only future is change.

ask re cage - Assirchi use them to get people to break out their outer cage.

re last night - soal called to you & drained air from ocean of forgetfulness.

re hyun - you will see her again.

curry - effect of discontent. Home curries by now you are waiting.

reddler - agents didn't pick an original title for Soal.

Goen - Soal sympathizer. Goen must wear public mask.

Chyle - you're not used to someone of your blood wielding authority.

change - change will come. Costs will not endure. In Koroll, it has already crumbled.

JOIN SAAL (5 focal pts) fountain, trap, shelter, ^{near} shelby

guerdin doesn't like light. agrees > no
points to city, walks east

Small Clearing shuttlecar
ladder, hatch
passcode is JGRKRA

Ronald
Cave

crystal cloud
Scene: You & Yuri standing beside talayr shelter, However nearby.

Nend
crystal
Cave

You "I hear it." I need to see this before you go."
 Yuri "But I've already --"
 You: "You'll stay behind us? If it comes to life or death - you'll back us up?
 And you'll stay 'me if she dies - even if it means leaving the House?"
 Yuri: (swallows) It won't come to that --"
 You "It might! Please. Just say it"
 Yuri: "Yes. I owe you that. And your friendship means everything to me.
 But yeah, it won't --"

Laxe flies into view screen, hitting it] -- fissure
 till said abt axe -- anger will turn on you if imprisoned
 till said abt view screen - what must be seen must be seen, & the sooner the better
 sense axe - anger! You are grasping axe handle as hard as you can manage.

Part III: Awakening
 Ocean Shore (Dawn, day 2)

Sense howays - hard of water (all turned lead to rest)

Forke in path pakal, hanging by tail

Shuttlecar

2 couches, screen, keypad, controls, hatch
 (trackball (ball + 4 buttons)
 letters, digits, special keys, buttons
 "manual" (red)
 ↑ disabled/broken
 type 1
 Passcode:
 type "JEGOKA" on keyboard

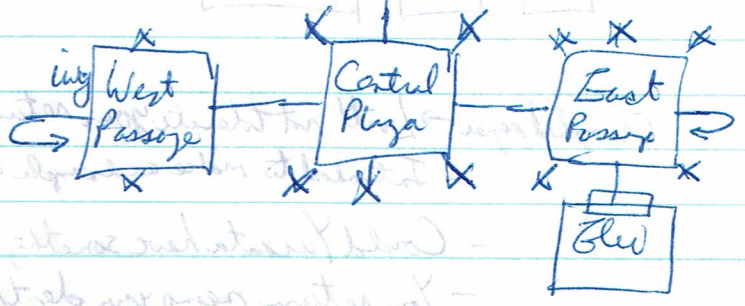
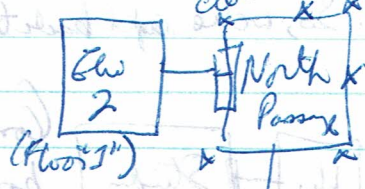
"Choose destination, enter new address, or select <cancel> control."
 1. 47-6110 (Home)
 2. Return to prev. location (47-6110)
 Current location: [no address]"

Shuttle Bay, Top level
Car (u)
w/ mech. + guides

Shuttle Bay
elevator door,
call button

Elev.
up/down arrow buttons

indentation - hole in center, spaced step - spiral out
buttons 1, 8



Plaza: fountain (water, sky, live statue, plague, seal)

Wing @ West: blue-green (illusion?)
- day & dying in reality

winged serpent
on xy + ruby
(not dead, not undead,
deja vu)
Mild shock to touch it.

Lashiarum is at Central Plaza (speaking to page)

hint to L: m will find the study just outside the elevator on the 5th floor.

Bring back the key when you're done. I will..."
ask page for key.

open lockit (Mother + Azaera on neck seals)

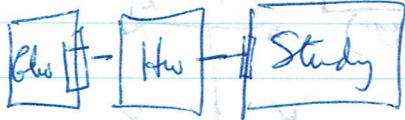
- if I get lost, any warrior of House knows he must protect her.
others will know where her home is.

- So why doesn't your granddaughter wear one?

- We don't need prot. the way you do.

- Ah. So, we're right back to this again.

4th Floor



(Combo storage, library, study)

books, shelves, desk, wastebasket
{Crumpled paper}

Crumpled paper → L will not tolerate your return.

- Intended to make an example of me, but for Sheiana who insisted on a 'less extreme' method.

- Could Yucasta have something to do with it?

- Your return means your death. Mother's illness is nothing to him.

flashback

⇒ Confession Room you are pleading to L to save K's life

walls are dampening both sound & telepathic senses.

L is angry.

K deserted L's authority & refuses to help, even tho' K has healed countless -

"I DID NOT GIVE YOU leave to speak!"

L: "she has lived on her own terms. Now she will die on her own terms, hasijija!"

Yuri: begins to plead as well; L's skin darkens!

L threatens: You are bound, if I take my mark off you, you are Houseless for life.

Speak no more, be in quarters in 5 min & never visit or help the outcasts again - or I will take it off & exile you.

Promise is betrayed, & he deserts you.

flashback

⇒ Shelter strangled {Mother}, generator

"When I am gone, I know you will leave my body here, white. Suspend.
 But when you're ready, take it back to the sea. I'me it came from.
 Az left flask. Nepenthe's Wind. Take me to the shore + use it.
 He knew I'd ~~not~~ want that way. Stardust." (she dies)
 - you run, ~~the~~ rip image from neck + hurl it at Yuni's tree,
 run, + trip + hit forehead (~~the~~) (forgetfulness)

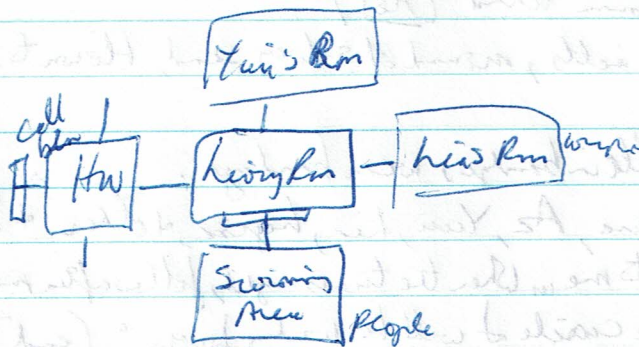
⇒ [?] voice speaks
 - awake to see him ushered out door in whippers

⇒ [Bedroom] Yuni kneels by you. (Yuni's Bedroom)
 bandage on forehead.

"I could not leave you here. Why you came back a second time."
 (Confusion, hurt, anger) "I can't stay here either."

Is my friendship still of any worth? _____

Yes (~~the~~ flicker of hope, relief, incomprehension) (He flees the room)
 i - healed cupid, bandage (key is gone)



Living Rm - cushions, table, fish tank, sea sphere

Shadow in HW

open locked → mangled + harnessed fergal (visions) leash + bond

↳ Leave this horse, & leave my city. I cannot carry out my orders,
 but I will see to it that you leave + never return →

Shuttle Bay

reptile kind (veil of magic)

- bloody claw swipe on one side of head

Pirrit
Haven

tree in shadow. silence. grass, stars. ~~sun~~

Shelter

web is no longer a threat

Mother's body on straw bed. Metal box (portable generator

- intensity dial is all to the right)

turn generator off (kept body in suspension)

flesh's contents to be poured on body (invented at end of 5th day)

*at shore, pour flesh on body - tomba disintegrates,
hoof of amber glows on dull grey

Afternoon → glows slowly, disappears

Wipes of steam, skin melts → inner skin (chilled)

Early evening → amber light inside (warmer)

→ proto human behind (hot)

Sunset → silhouette melts, mound of silvery sand, blown to sea.

remove bandage, put kelle in bandage, wear bandage.

in Ocean - hear Ketana, Az, Yuni, Lia, heize, & others + Soal.

Soal: Love to me, when the time is right, follow after me

+ close the circle I will be waiting for you." [end]

Leave in Lia's room → see Lia, touch Lia, talk to Lia