

- find Tina + get out! (Boss Mac has collapsed)

Zombies!
rate 3

[Office] ext S, key, boss, desk { }, wooden bat

x boss (into wood, badge) search boss (\$.73, toothpicks, 9mm pistol ammo)

x ammo (M9 Beretta ammo) x lock. < desk. open desk { pistol }

x pistol. take pistol. put ammo in pistol. x bat. take bat

S. n. kick door. hit door with bat. hit door.
open door. shoot door (✓) S.

7x, 2zy

Unknown command.

[Warehouse N] exts N, S, & E. drum, chainsaw. take chainsaw

S [Warehouse S] exts N, S & E. door S, zombie warehouse worker.

x zombie (it's Tina!) { what doesn't work: shoot zombie, hit zombie with bat (down through) }

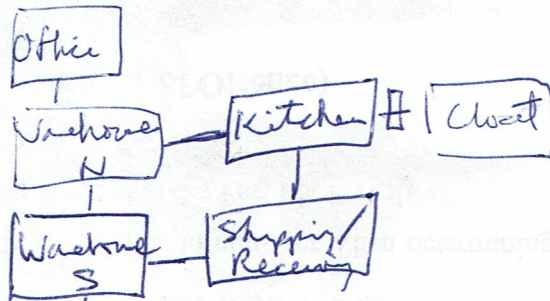
e [Shipping/Receiving] buy bag + combustible crates. open combustible (bag)

x bag. take bag. open bag (black powder) x powder { can be made into a wide fire or sprinkled for a mile shift fire }

[Kit] door E locked, closed junction plate. open plate { key }

x key. take key. unlock door = key. e. [Closet] x explosives. { eat in head }

sprinkle fuse. w. sprinkle fuse. s. sprinkle fuse. w. sprinkle fuse. (now you can't leave!)



The Great
Outdoors

give brains to zombie
hit zombie with bat.

x Tina (key)
unlock door with key.

start chainsaw (not turn on chainsaw)
S. get...

open buspaiged with bat.
→ pig brains.